

CORNER RECORD

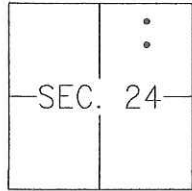
Agency Index CR-17-309

Document Number _____

City of Lodi

County of San Joaquin, California

Brief Legal Description Street centerline monuments on Reynold Ranch Parkway



CORNER TYPE

- Government Corner Control
 Meander Property
 Rancho Other

Date of Survey 2017-10-27

COORDINATES (Optional)

- N. _____ E. _____
 Elevation _____
 Units Metric U.S. Survey Foot
 Horizontal Datum _____
 Zone _____ Epoch Date _____
 Vertical Datum: _____
 Complies with Public Resources Code §§8801-8819
 Complies with Public Resources Code §§8890-8902

PLS Act Ref.: 8766(d) 8771 8773 Other: _____

Corner/Monument: Left as found Established Rebuilt Pre-Construction
 Found and tagged Reestablished Referenced Post-Construction

Narrative of corner identified and monument as found and set or reset:
 See sheet #2 for description(s):

FOUND TWO 3/4" IRON RODS, EACH WITH A PLASTIC CAP STAMPED "LS 6630" ON THE CENTERLINE OF REYNOLDS RANCH PARKWAY, AS SHOWN ON THE PARCEL MAP REYNOLDS RANCH, PHASE 3A, FILED IN BOOK 25 OF PARCEL MAPS, AT PAGE 197, SAN JOAQUIN COUNTY RECORDS. SET SWING TIES AS SHOWN ON SHEET #2.

SURVEYOR'S STATEMENT

This Corner Record was prepared by me or under my direction in conformance with the Land Surveyor's Act on NOVEMBER 14TH, 2017.

Signed [Signature] P.L.S. or R.C.E. No.: 8366



COUNTY SURVEYOR'S STATEMENT

This Corner Record was received November 21, 2017 and examined and filed December 28, 2017.

Signed [Signature] P.L.S. or R.C.E. No.: 4842

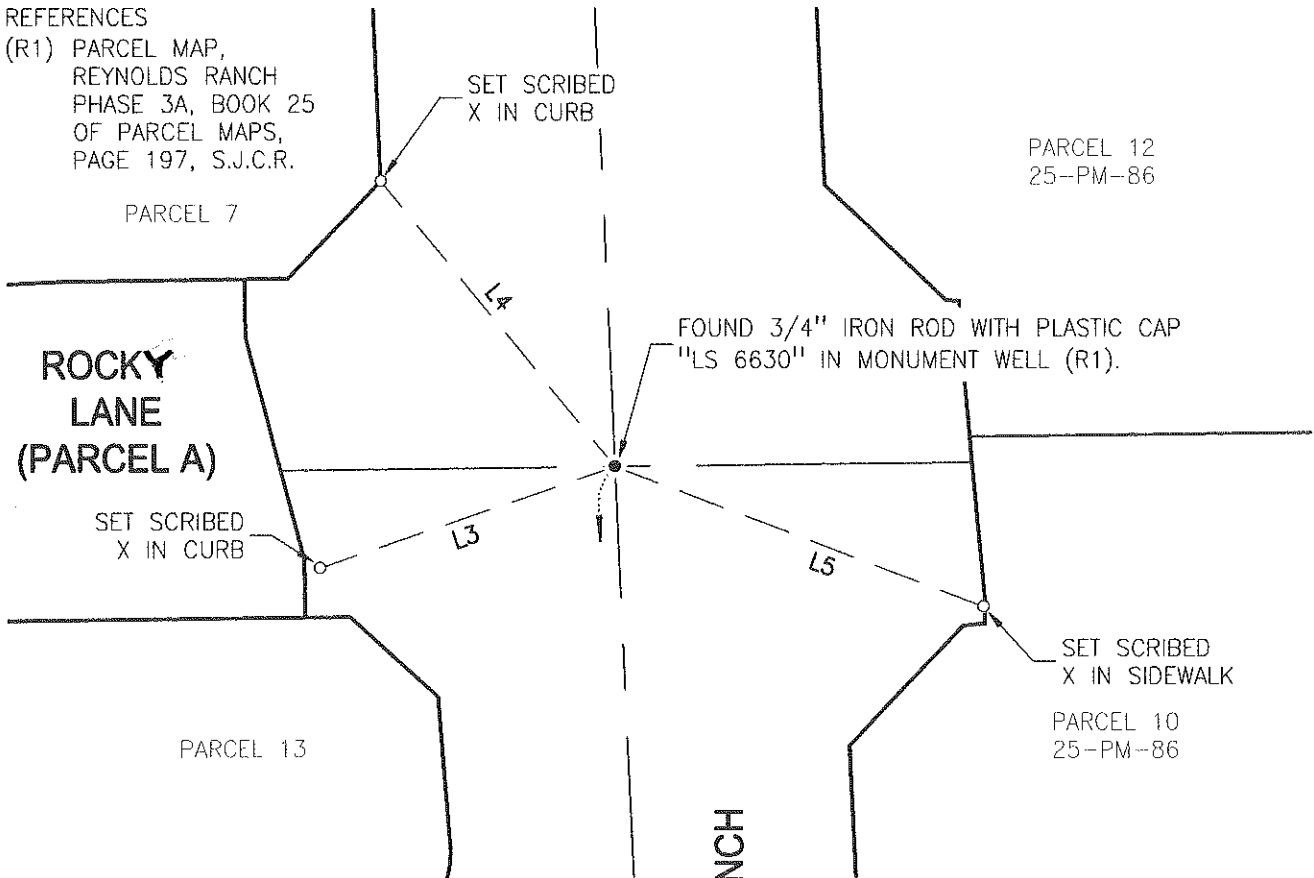
Title County Surveyor

County Surveyor's Comment _____



REFERENCES

(R1) PARCEL MAP,
REYNOLDS RANCH
PHASE 3A, BOOK 25
OF PARCEL MAPS,
PAGE 197, S.J.C.R.



LINE DATA TABLE		
LINE	BEARING	DISTANCE
L1	N11°38'50"W	35.18'
L2	N65°01'07"E	57.09'
L3	S71°03'10"W	83.92'
L4	S39°21'32"E	99.38'
L5	N69°07'53"W	105.92'

S2°34'50"E 408.02'
(BASIS OF BEARINGS)

REYNOLDS RANCH
PARKWAY

