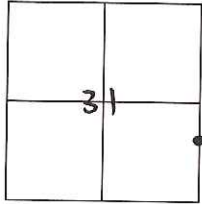


# CORNER RECORD

Agency Index CR-17-367

Document Number \_\_\_\_\_

City of TRACY County of SAN JOAQUIN, CaliforniaBrief Legal Description CORRAL HOLLOW ROAD AND STARFLOWER DRIVE

T2S, R5E, MPM

**CORNER TYPE**

Government Corner  Control   
 Meander  Property   
 Rancho  Other

Date of Survey SEPTEMBER 14, 2017**COORDINATES (Optional)**

N. \_\_\_\_\_ E. \_\_\_\_\_

Elevation \_\_\_\_\_

Units Metric  U.S. Survey Foot Horizontal Datum 36 R/S 118

Zone \_\_\_\_\_ Epoch Date \_\_\_\_\_

Vertical Datum 36 R/S 118 Complies with Public Resources Code §§ 8801-8819 Complies with Public Resources Code §§ 8890-8902

PLS Act Ref.:  8765(d)  8771  8773  Other:

Corner/Monument:  Left as found  Established  Rebuilt  Pre-Construction

Found and tagged  Reestablished  Referenced  Post-Construction

Narrative of corner identified and monument as found, set, reset, replaced, or removed:

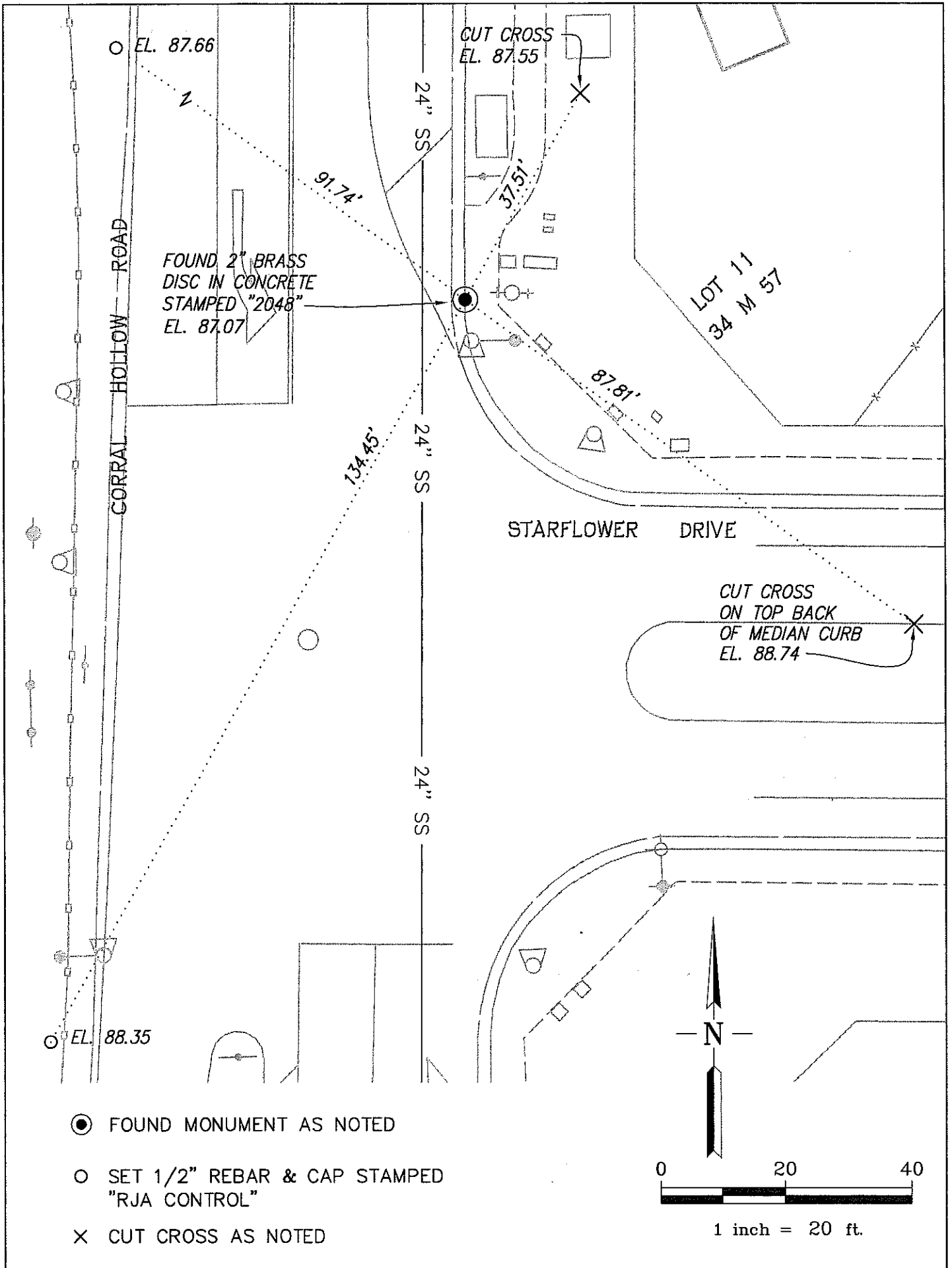
 See sheet #2 for description(s):

PRE-CONSTRUCTION DOCUMENTATION OF CITY OF TRACY  
 GPS CONTROL STATION NO. 2048 PER RECORD OF SURVEY 36 R/S 118

**SURVEYOR'S STATEMENT**

This Corner Record was prepared by me or under my direction in conformance with

the Professional Land Surveyors' Act on SEPTEMBER 14, 2017Signed [Signature] P.L.S. or R.C.E. No. 6441**COUNTY SURVEYOR'S STATEMENT**This Corner Record was received November 16, 2017and examined and filed December 28, 2017Signed [Signature] P.L.S. or R.C.E. No. 4842Title COUNTY SURVEYOR**County Surveyor's Comment**



- FOUND MONUMENT AS NOTED
- SET 1/2" REBAR & CAP STAMPED "RJA CONTROL"
- × CUT CROSS AS NOTED

