

# CORNER RECORD

Agency Index CR-17-364

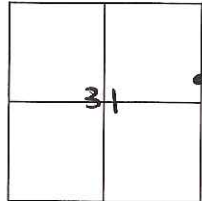
Document Number \_\_\_\_\_

City of TRACY County of SAN JOAQUIN, California

Brief Legal Description CORRAL HOLLOW ROAD AND MOUNTAIN VIEW ROAD

**CORNER TYPE**

**COORDINATES (Optional)**



T 2 S, R 5 E, MDM

- Government Corner  Control   
 Meander  Property   
 Rancho  Other

N. \_\_\_\_\_ E. \_\_\_\_\_  
 Elevation \_\_\_\_\_  
 Units Metric  U.S. Survey Foot   
 Horizontal Datum \_\_\_\_\_  
 Zone \_\_\_\_\_ Epoch Date \_\_\_\_\_  
 Date of Survey SEPTEMBER 14, 2017 Vertical Datum \_\_\_\_\_

- Complies with Public Resources Code §§ 8801-8819  
 Complies with Public Resources Code §§ 8890-8902

PLS Act Ref.:  8765(d)  8771  8773  Other:

Corner/Monument:  Left as found  Established  Rebuilt  Pre-Construction  
 Found and tagged  Reestablished  Referenced  Post-Construction

Narrative of corner identified and monument as found, set, reset, replaced, or removed:

See sheet #2 for description(s):

PRE-CONSTRUCTION DOCUMENTATION OF THE STREET MONUMENTATION AT THE INTERSECTION OF CORRAL HOLLOW ROAD AND MOUNTAIN VIEW ROAD

**SURVEYOR'S STATEMENT**

This Corner Record was prepared by me or under my direction in conformance with the Professional Land Surveyors' Act on SEPTEMBER 14, 2017

Signed [Signature] P.L.S. or R.C.E. No. 6441



**COUNTY SURVEYOR'S STATMENT**

This Corner Record was received November 16, 2017

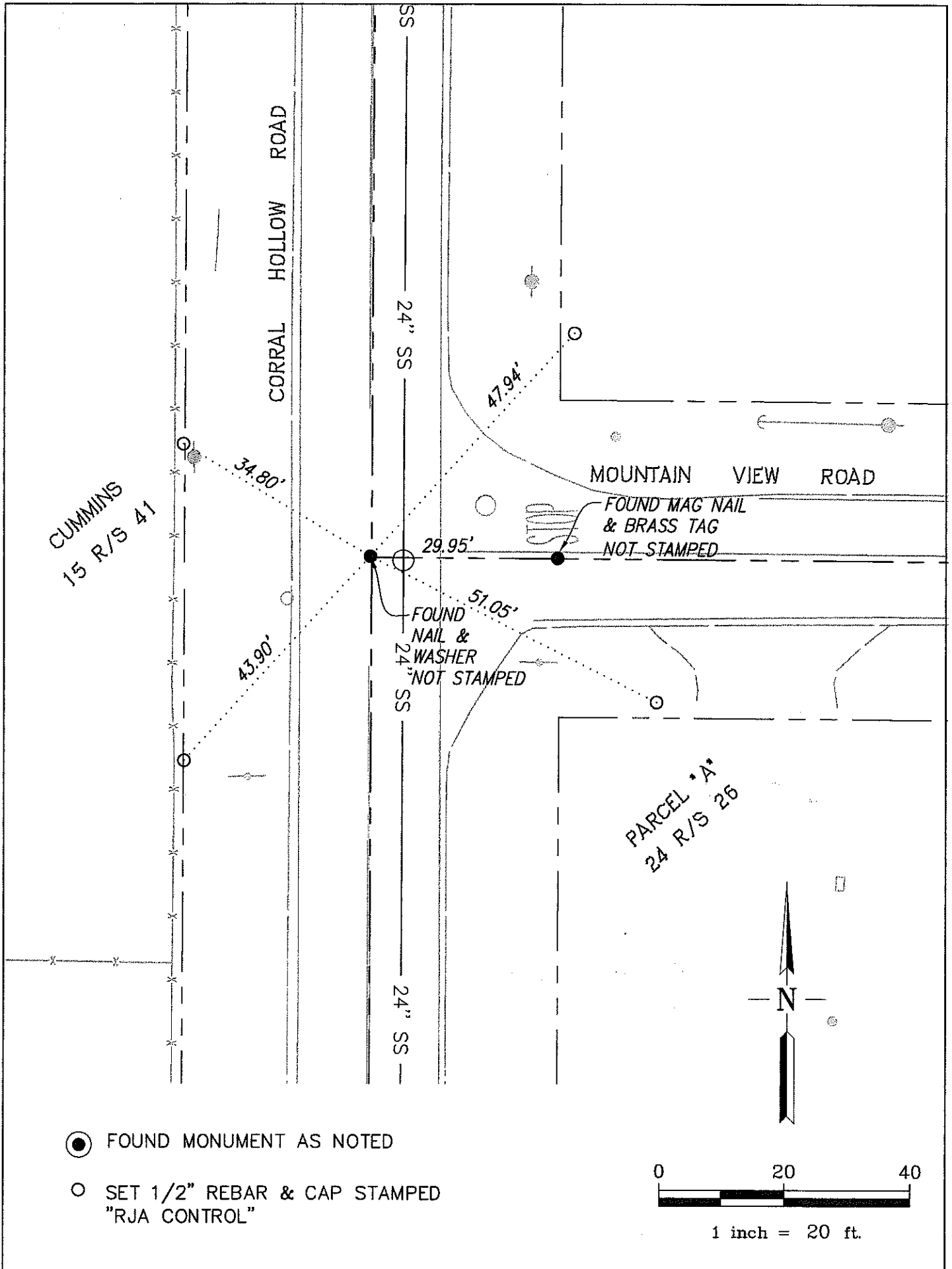
and examined and filed December 28, 2017

Signed Warren D. Smith P.L.S. or R.C.E. No. 4842

Title COUNTY SURVEYOR



**County Surveyor's Comment**



● FOUND MONUMENT AS NOTED

○ SET 1/2" REBAR & CAP STAMPED "RJA CONTROL"

