

CORNER RECORD

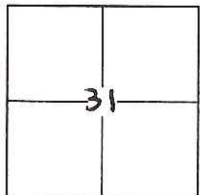
Agency Index CR-17-359
 Document Number _____

City of Stockton County of San Joaquin, California

Brief Legal Description Lot 651, Brookdale Estates, Unit No. 4, 30 Maps & Plats 84

CORNER TYPE

COORDINATES (Optional)



T2N, R6E, M.D.M.

Government Corner Control
 Meander Property
 Rancho Other

N. _____ E. _____
 Elevation _____
 Units Metric U.S. Survey Foot
 Horizontal Datum _____
 Zone _____ Epoch Date _____
 Vertical Datum _____

Date of Survey November 2, 2017

Complies with Public Resources Code §§8801-8819
 Complies with Public Resources Code §§88900-8902

PLS Act Ref.: 8765(d) 8771 8773 Other:
 Corner/Monument: Left as found Established Rebuilt Pre-Construction
 Found and tagged Reestablished Referenced Post-Construction

Narrative of corner identified and monument as found, set, reset, replaced, or removed:

See sheet #2 for description(s):

1. Found (5) centerline monuments per 30 Maps & Plats 84
2. Set (1) 3/4" iron pipe w/ plastic plug & tack, tagged "LS 7539"
3. Set (4) wood stakes on property line (for fence construction)

SURVEYOR'S STATEMENT

This Corner Record was prepared by me or under my direction in conformance with
 the Professional Land Surveyor's Act on November 4, 2017

Signed [Signature] P.L.S. or R.C.E. No. LS 7539



COUNTY SURVEYOR'S STATEMENT

This Corner Record was received November 16, 2017

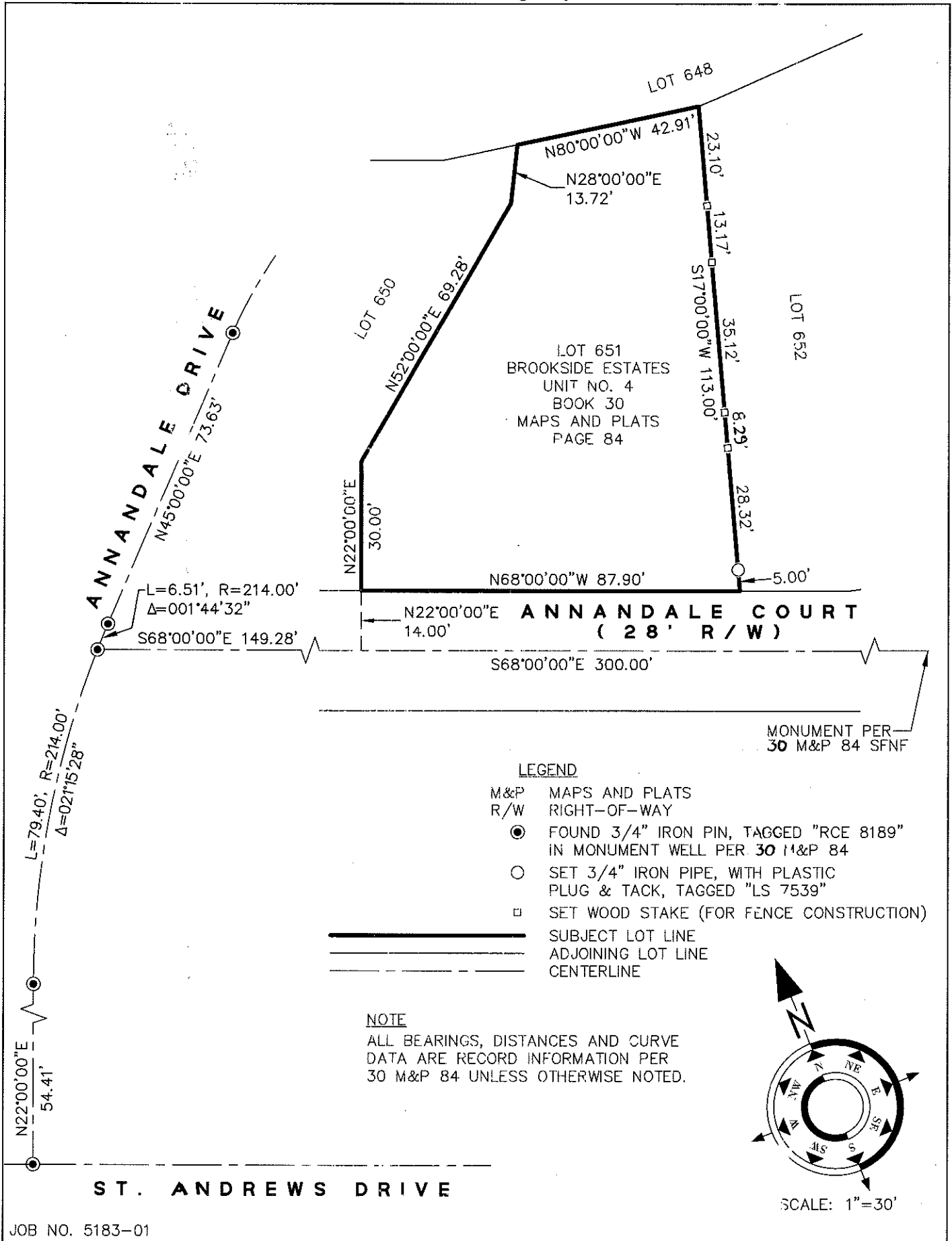
and examined and filed December 28, 2017

Signed [Signature] P.L.S. or R.C.E. No. 4842

Title County Surveyor

County Surveyor's Comment:





JOB NO. 5183-01