

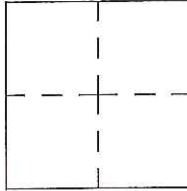
CORNER RECORD

Agency Index CR-17-355

Document Number _____

City of _____ County of San Joaquin, California

Brief Legal Description Frisbee Lane @ Watters Road within Section 15, C.M. Weber Grant



CORNER TYPE

COORDINATES (Optional)

- Government Corner Control
- Meander Property
- Rancho Other

N. _____ E. _____
 Elevation. _____
 Units Metric U.S. Survey Foot
 Horizontal Datum _____
 Zone _____ Epoch Date _____
 Vertical Datum _____

Date of Survey March 14, 2017

- Complies with Public Resources Code §§8801-8819
- Complies with Public Resources Code §§8890-8902

PLS Act Ref.: 8765(d) 8771 8773 Other:

Corner/Monument: Left as found Established Rebuilt Pre-Construction
 Found and tagged Reestablished Referenced Post-Construction

Narrative of corner identified and monument as found, set, reset, replaced, or removed:
 See sheet #2 for description(s):

SURVEYOR'S STATEMENT

This Corner Record was prepared by me or under my direction in conformance with
 the Professional Land Surveyor's Act on November 20, 2017

Signed James E. Hart P.L.S. or R.C.E. No. 8657



COUNTY SURVEYOR'S STATEMENT

This Corner Record was received November 21, 2017
 and examined and filed December 6, 2017

Signed Warren D. Smith P.L.S. or R.C.E. No. 4842

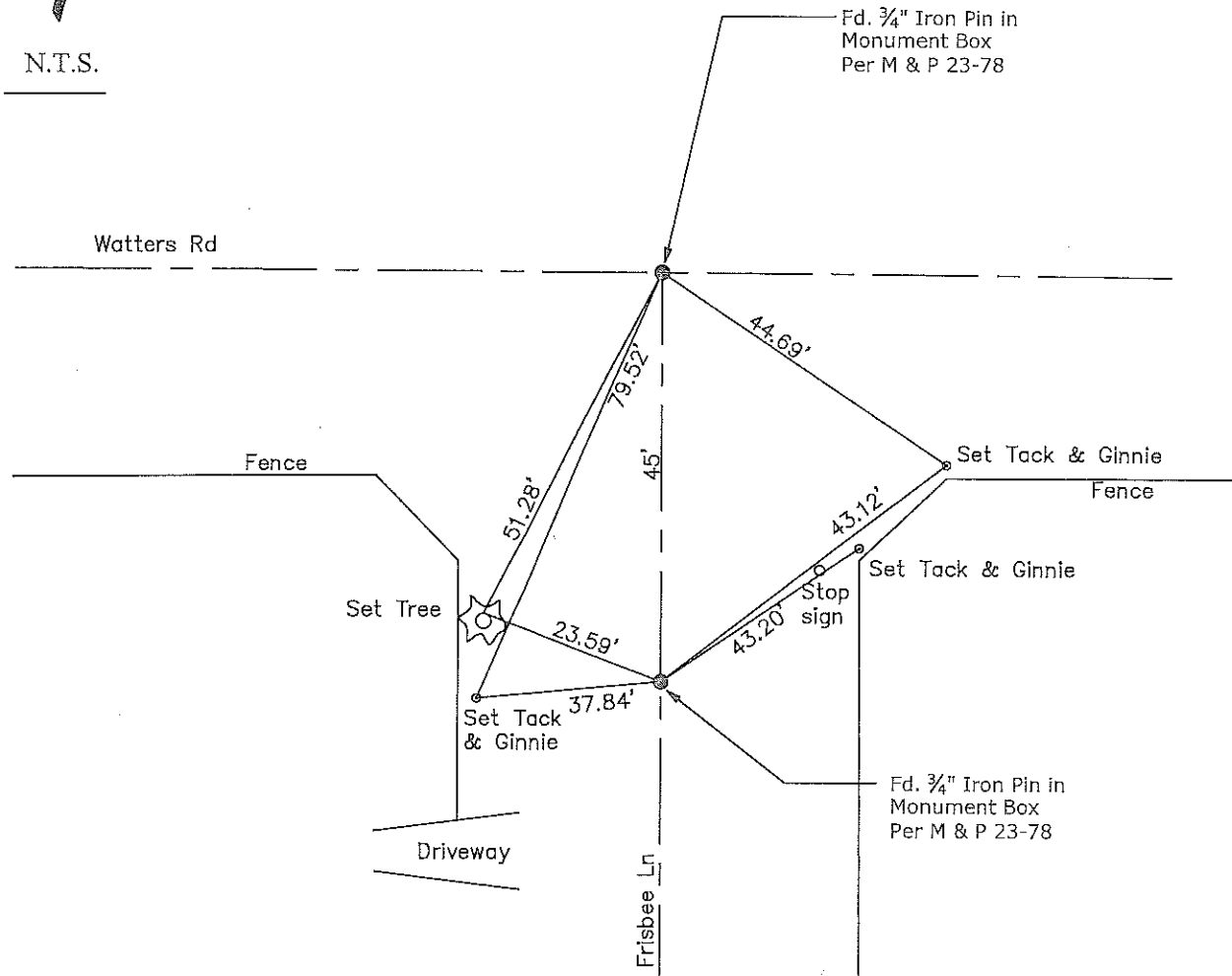
Title County Surveyor

County Surveyor's Comment





N.T.S.



CR=Corner Record
 FP=Fence Post
 JP=Joint Pole
 LP=Light Pole
 PP=Power Pole
 GP=Guy Pole
 SP=Service Pole
 TP=Telephone Pole
 S.F.N.=Searched Found Nothing
 N.T.S.=Not To Scale
 M&P=Maps & Plats
 PM=Parcel Map
 RS=Record of Survey
 FB=Field Book
 N=North
 DI=Drain Inlet
 TOC=Top of Curb

Set=Conc. Nail with Brass Washer Stamped
 "S.J. Co.", unless otherwise noted
 Fd.=Found Conc. Nail with Brass Washer Stamped
 "S.J. Co.", unless otherwise noted
 Note: Found Monuments are not tagged
 unless otherwise noted.

"No Attempt Was Made to Verify the Monument(s)"