

CORNER RECORD

Agency Index CR-17-349

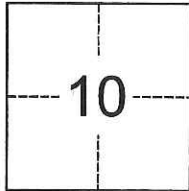
Document Number _____

City of Lodi County of San Joaquin, California

Brief Legal Description Parcel 3; Book 22 of Parcel Maps, Page 124

CORNER TYPE

COORDINATES (Optional)



Government Corner Control
 Meander Property
 Rancho Other

N. _____ E. _____

Elevation _____

Units Metric U.S. Survey Foot

Horizontal Datum _____

Zone _____ Epoch Date _____

Date of Survey October 18, 2017

Vertical Datum _____

T.3N., R.6E., M.D.B. & M.

Complies with Public Resources Code §§8801-8819

Complies with Public Resources Code §§8890-8902

PLS Act Ref.: 8765(d) 8771 8773 Other:

Corner/Monument: Left as found Established Rebuilt Pre-Construction

Found and tagged Reestablished Referenced Post-Construction

Narrative of corner identified and monument as found, set, reset, replaced, or removed:

See sheet #2 for description(s):

It is the purpose of this corner record to establish ties to an existing monument prior to construction. The monument was found and tied out as depicted on attached exhibit.

SURVEYOR'S STATEMENT

This Corner Record was prepared by me or under my direction in conformance with

the Professional Land Surveyors' Act on November 8, 2017

Signed [Signature] P.L.S. or R.C.E. No. 7889



COUNTY SURVEYOR'S STATEMENT

This Corner Record was received December 20, 2017

and examined and filed January 4, 2018

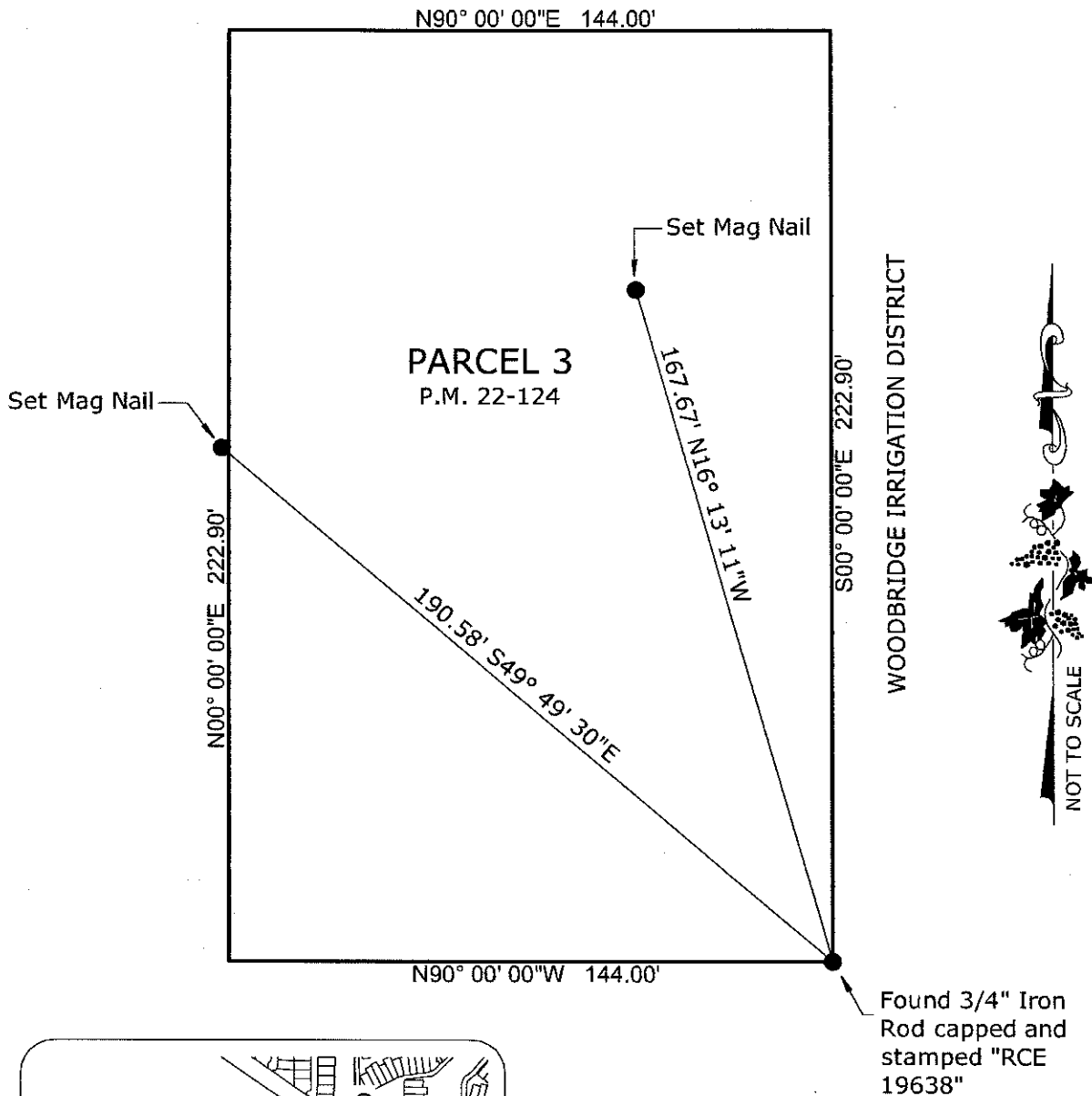
Signed [Signature] P.L.S. or R.C.E. No. 4842

Title County Surveyor

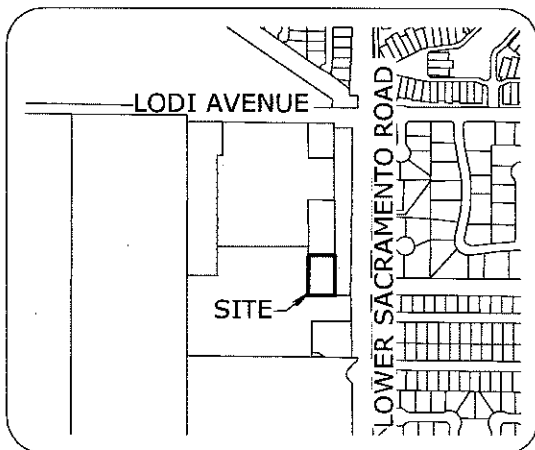
County Surveyor's Comment _____



S:\Projects\2016\10022\3_Drawings\10022_C2.dwg 12/05/17 4:25pm - HESUN - XINER: 08x11_PP_Avg 10022_0501-2_RL.dwg



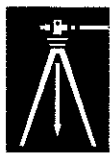
WOODBIDGE IRRIGATION DISTRICT



VICINITY MAP
No Scale

Notes:

1. Monuments are not tagged unless noted.
2. No attempt was made to verify the monument(s)



PREPARED IN THE OFFICE OF:

BAUMBACH & PIAZZA, INC.
CIVIL ENGINEERS • SURVEYORS

www.bpengineers.net
209.368.6618

323 W. Elm St.
Lodi, CA 95240