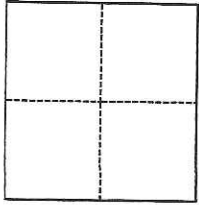


# CORNER RECORD

Agency Index CR-17-348

Document Number \_\_\_\_\_

City of LODI County of SAN JOAQUIN, CaliforniaBrief Legal Description RETRACEMENT SURVEY OF RS 31-162**CORNER TYPE****COORDINATES (Optional)**

- Government Corner     Control  
 Meander                     Property  
 Rancho                         Other

N. \_\_\_\_\_ E. \_\_\_\_\_

Elevation \_\_\_\_\_

Units     Metric             U.S. Survey Foot

Horizontal Datum \_\_\_\_\_

Zone \_\_\_\_\_ Epoch Date \_\_\_\_\_

Vertical Datum \_\_\_\_\_

 Complies with Public Resources Code §§8801-8819 Complies with Public Resources Code §§8890-8902PLS Act Ref.:     8765(d)                     8771                     8773                     Other:Corner/Monument:     Left as found                     Established                     Rebuilt                     Pre-Construction                                   Found and tagged                     Reestablished                     Referenced                     Post-Construction

Narrative of corner identified and monument as found, set, reset, replaced, or removed:

 See sheet #2 for description(s):

**FOUND MONUMENTS ON MOST WESTERLY LINE OF PROPERTY PER R.S. 31-162, RESET MISSING MONUMENTS AS DESTROYED BY PAST CONSTRUCTION ACTIVITIES. SEE REVERSE SIDE FOR MONUMENTS FOUND AND SET.**

**SURVEYOR'S STATEMENT**

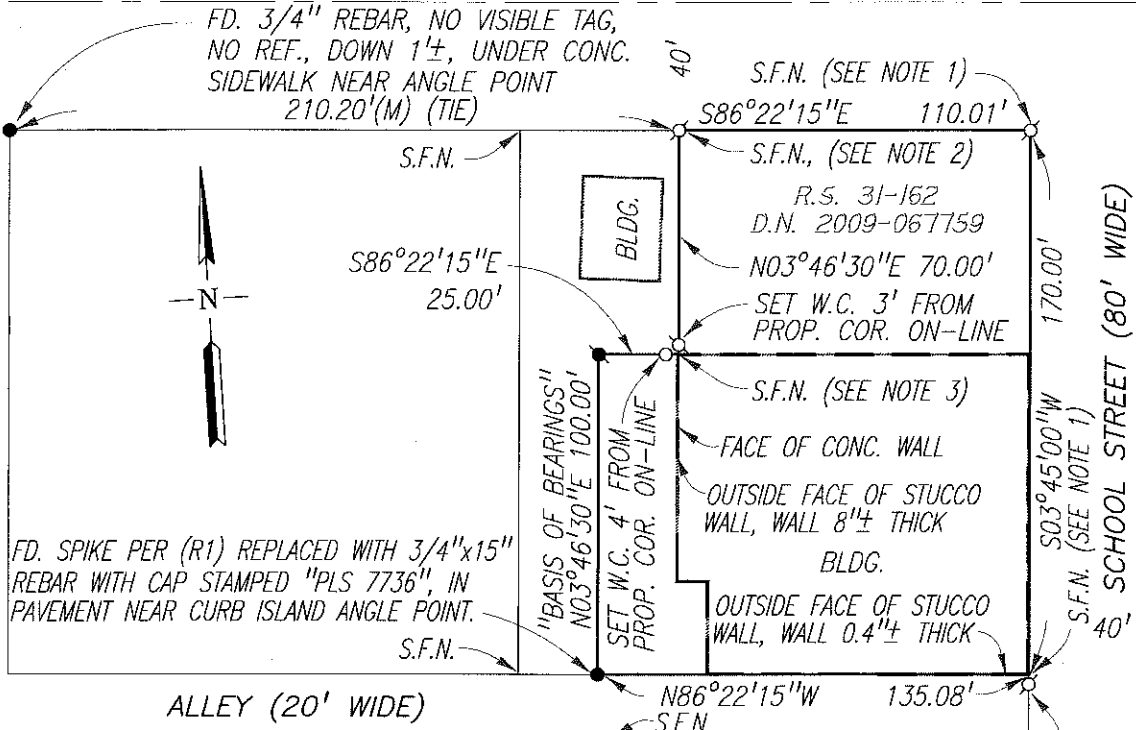
This Corner Record was prepared by me or under my direction in conformance with

the Professional Land Surveyors' Act on October 30, 2017Signed Walter John Sharp P.L.S. or R.C.E. No. 4-7736**COUNTY SURVEYOR'S STATEMENT**This Corner Record was received November 3, 2017and examined and filed November 27, 2017Signed Warren D. Smith P.L.S. or R.C.E. No. 4842Title County Surveyor**County Surveyor's Comment**

WALNUT STREET (80' WIDE)

CHURCH STREET (80' WIDE)

SCHOOL STREET (80' WIDE)



**MONUMENTS FOUND AND SET**

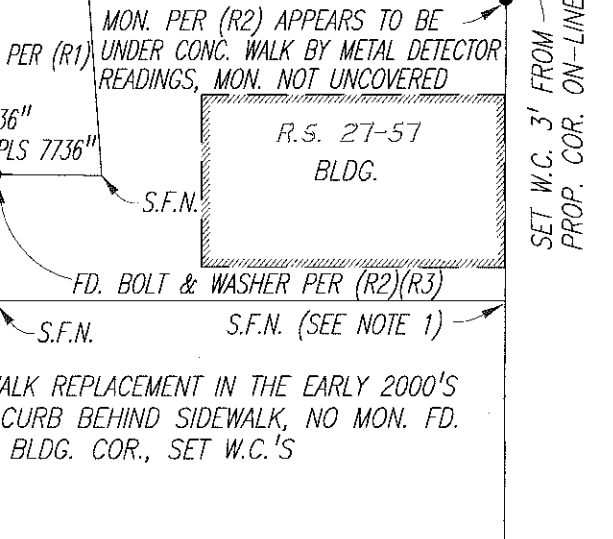
- FD. 3/4" REBAR WITH CAP STAMPED "RCE 15372" PER (R1)
- FD. MON. AS DESCRIBED AND REFERENCED
- SET 3/4"x30" REBAR WITH CAP STAMPED "PLS 7736"
- ⊗ SET 1"x3" COPPER MON. IN CONCRETE STAMPED "PLS 7736"

**LEGEND:**  
 D.N. RECORDER'S DOCUMENT NO., S.J.C.R.  
 R.S. RECORD OF SURVEY, BOOK-PAGE, S.J.C.R.  
 P.M. PARCEL MAP, BOOK-PAGE, S.J.C.R.

**NOTES:**

- 1) MON. DESTROYED BY RECENT CITY SIDEWALK REPLACEMENT IN THE EARLY 2000'S
- 2) MON. SET IS ON TOP OF LANDSCAPE CURB BEHIND SIDEWALK, NO MON. FD.
- 3) MON. LOCATION NEAR CONC. WALL OF BLDG. COR., SET W.C.'S

FD. 3/4" IRON ROD PER (R2)(R3)



P.M. 23-111

- REFERENCES:**
- (R1) R.S. 31-162
  - (R2) R.S. 27-57
  - (R3) P.M. 23-111

LODI AVE.

Scale: 1"=60'	<b>CORNER RECORD</b> <b>EXHIBIT MAP: SCHOOL STREET PROPERTIES, LLC</b>	Date: 10/30/2017
Job No.: 17-096		DWG: 17096CR