

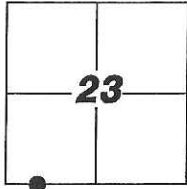
CORNER RECORD

Agency Index: CR-17-336

Document Number: _____

City of LATHROP County of SAN JOAQUIN, California

Brief Legal Description FOUND MONUMENT AT THE INTERSECTION OF LATHROP RD AND REV. MAURICE COTTON DR. LOCATED IN THE SOUTHWEST QUARTER OF SECTION 23. T.1S, R.6E M.D.B.&M.



T.1S, R.6E

CORNER TYPE

- Government Corner Control
 Meander Property
 Rancho Other

Date of Survey 8-22-2017

COORDINATES (Optional)

N. _____ E. _____

Elevation _____

Units Metric U.S. Survey Foot

Horizontal Datum _____

Zone _____ Epoch Date _____

Vertical Datum _____

Complies with Public Resources Code SS8801-8819

Complies with Public Resources Code SS8890-8902

PLS Act Ref: 8765(d) 8771 8773 Other:

Corner/
 Monument: Left as found Established Rebuilt Pre-Construction
 Found and Tagged Reestablished Referenced Post-Construction

Narrative of corner identified and monument as found, set, reset, replaced, or removed:

See sheet #2 for description(s):

FOUND MONUMENT, NO REFERENCE; SET THREE (3) CONCRETE NAILS WITH BRASS TAG STAMPED "LS 6953" AS WITNESS CORNERS, ALL AS SHOWN ON SHEET 2

SURVEYOR'S STATEMENT

This Corner Record was prepared by me or under my direction in conformance with the Land Surveyors' Act on SEPTEMBER 15, 2017,

Signed [Signature] P.L.S. or R.C.E. Number 6953



COUNTY SURVEYOR'S STATEMENT

This Corner Record was received October 16, 2017

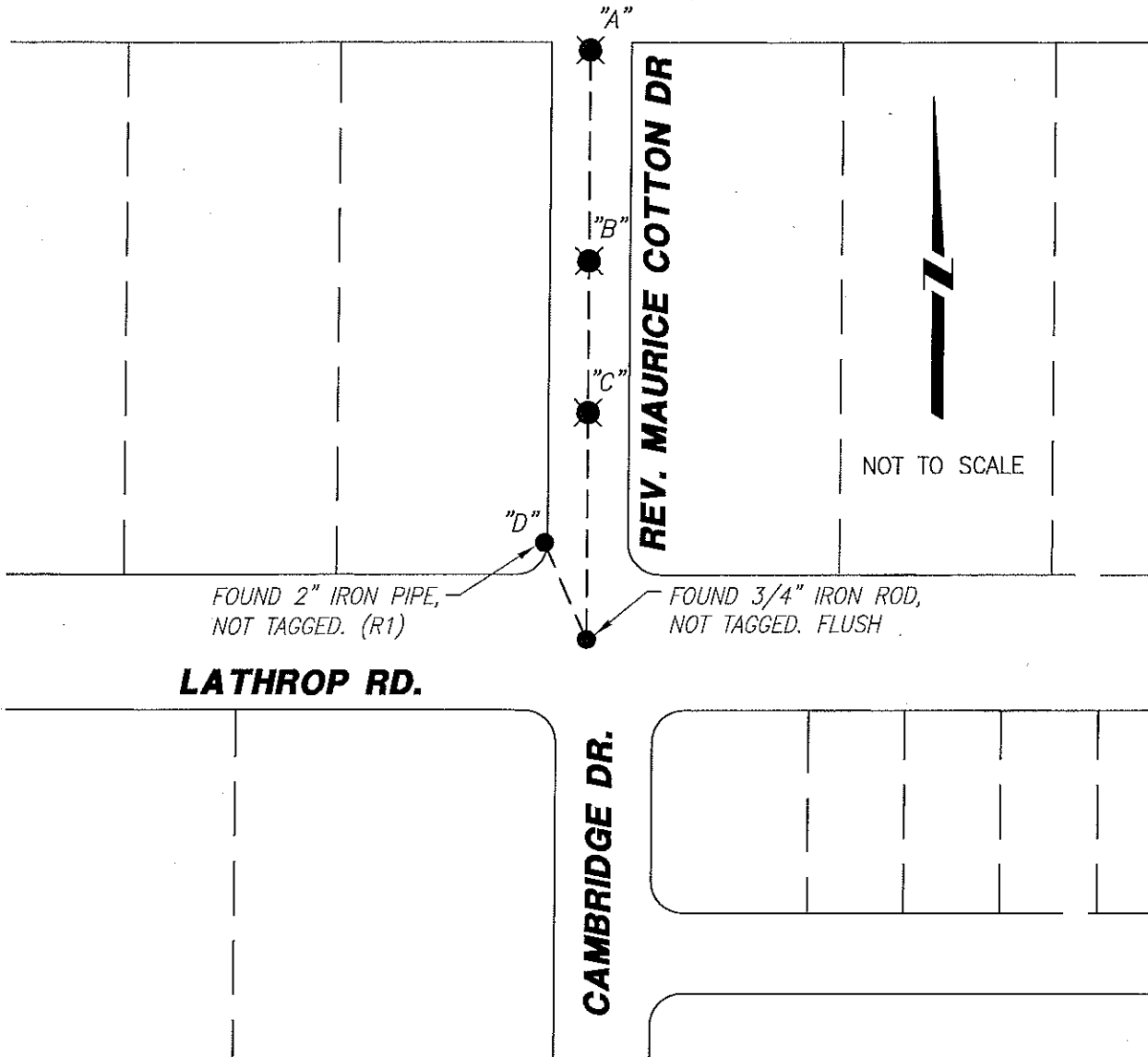
and examined and filed November 7, 2017

Signed [Signature] P.L.S. or R.C.E. No: 4842

Title County Surveyor



County Surveyor's Comment _____



FOUND 2" IRON PIPE,
NOT TAGGED. (R1)

FOUND 3/4" IRON ROD,
NOT TAGGED. FLUSH

LATHROP RD.

CAMBRIDGE DR.

REV. MAURICE COTTON DR

NOT TO SCALE

REFERENCE:

(R1) 11-M-136, S.J.C.R.

LEGEND:

- ☉ SET CONCRETE NAIL WITH BRASS TAG
L.S. 6953.
- FOUND MONUMENT AS NOTED.
- M&P- MAPS & PLATS
- S.J.C.R. SAN JOAQUIN COUNTY RECORDS
- (M) MEASURED DISTANCE. ALL DISTANCES ARE
MEASURED UNLESS NOTED OTHERWISE.

BS-@-FS	☉	FS DISTANCE
B-A-A	00°00'00"	365.710'(M)
B-A-B	00°00'00"	234.855'(M)
B-A-C	00°00'00"	140.860'(M)
B-A-D	337°44'30"	65.665'(M)

NOTE:

THIS CORNER RECORD DOES NOT
VERIFY THIS MONUMENT TO BE
IN THE CORRECT POSITION.