

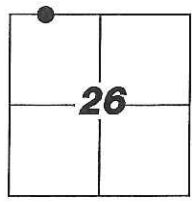
CORNER RECORD

Agency Index: CR-17-335

Document Number: _____

City of LATHROP County of SAN JOAQUIN, California

Brief Legal Description FOUND MONUMENT AT THE INTERSECTION OF LATHROP RD AND CAMBRIDGE DR. LOCATED IN THE NORTHWEST QUARTER OF SECTION 26. T.1S, R.6E M.D.B.&M.



T.1S, R.6E

CORNER TYPE

- Government Corner
- Meander
- Rancho
- Control
- Property
- Other

Date of Survey 8-22-2017

COORDINATES (Optional)

N. _____ E. _____
 Elevation _____
 Units Metric U.S. Survey Foot
 Horizontal Datum _____
 Zone _____ Epoch Date _____
 Vertical Datum _____

- Complies with Public Resources Code SS8801-8819
- Complies with Public Resources Code SS8890-8902

PLS Act Ref: 8765(d) 8771 8773 Other:

Corner/Monument: Left as found Established Rebuilt Pre-Construction
 Found and Tagged Reestablished Referenced Post-Construction

Narrative of corner identified and monument as found, set, reset, replaced, or removed:

See sheet #2 for description(s):

FOUND MONUMENT, NO REFERENCE; SET TWO (2) CONCRETE NAILS WITH BRASS TAG STAMPED "LS 6953"
AS WITNESS CORNERS, ALL AS SHOWN ON SHEET 2

SURVEYOR'S STATEMENT

This Corner Record was prepared by me or under my direction in conformance with
 the Land Surveyors' Act on SEPTEMBER 15, 2017,



Signed [Signature] P.L.S. or R.C.E. Number 6953

COUNTY SURVEYOR'S STATEMENT

This Corner Record was received October 16, 2017

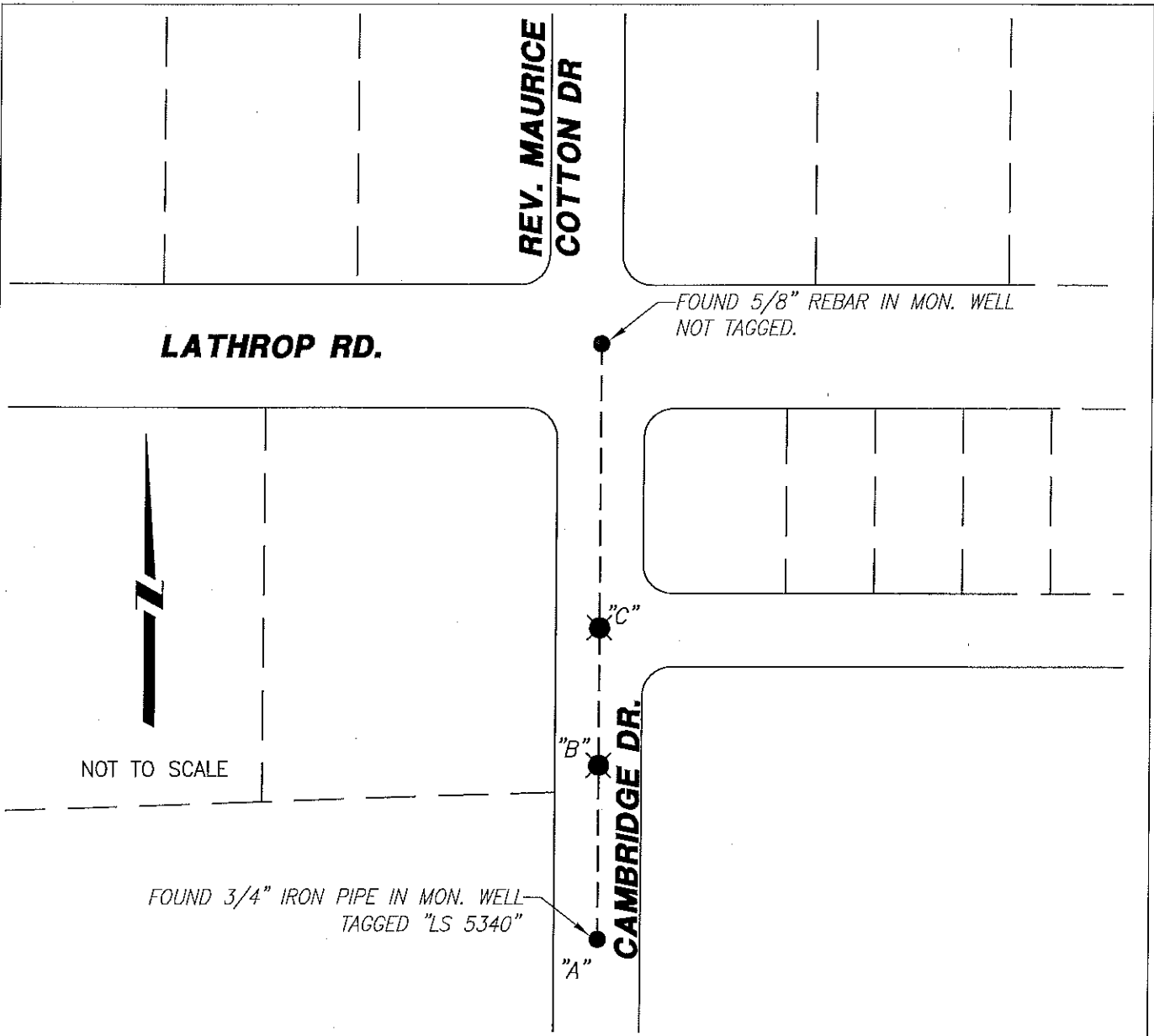
and examined and filed November 7, 2017

Signed [Signature] P.L.S. or R.C.E. No: 4842

Title County Surveyor



County Surveyor's Comment _____



LEGEND:

- SET CONCRETE NAIL WITH BRASS TAG
L.S. 6953.
- FOUND MONUMENT AS NOTED.
- M&P- MAPS & PLATS
- S.J.C.R. SAN JOAQUIN COUNTY RECORDS
- (M) MEASURED DISTANCE. ALL DISTANCES ARE
MEASURED UNLESS NOTED OTHERWISE.

X AND DISTANCE TABLE		
BS-@-FS	X	FS DISTANCE
B-A-A	00°00'00"	405.950'(M)
B-A-B	00°00'00"	287.160'(M)
B-A-C	00°00'00"	193.325'(M)

NOTE:

THIS CORNER RECORD DOES NOT VERIFY THIS MONUMENT TO BE IN THE CORRECT POSITION.