

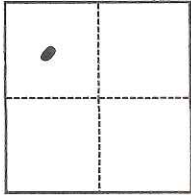
# CORNER RECORD

Agency Index CR-17-331  
Document Number \_\_\_\_\_

City of LODI County of SAN JOAQUIN, California  
Brief Legal Description \_\_\_\_\_

### CORNER TYPE

### COORDINATES (Optional)



- Government Corner
- Meander
- Rancho
- Control
- Property
- Other

N. \_\_\_\_\_ E. \_\_\_\_\_  
 Elevation \_\_\_\_\_  
 Units  Metric  U.S. Survey Foot  
 Horizontal Datum \_\_\_\_\_  
 Zone \_\_\_\_\_ Epoch Date \_\_\_\_\_  
 Vertical Datum \_\_\_\_\_  
 Complies with Public Resources Code §§8801-8819  
 Complies with Public Resources Code §§8890-8902

Date of Survey October 5, 2017

Sec 1 T.3N., R.6E.

PLS Act Ref.:  8765(d)  8771  8773  Other:  
 Corner/Monument:  Left as found  Established  Rebuilt  Pre-Construction  
 Found and tagged  Reestablished  Referenced  Post-Construction

Narrative of corner identified and monument as found, set, reset, replaced, or removed:  
 See sheet #2 for description(s):

Fd. iron rod as shown on Parcel map Book 8, Pg. 22 San Joaquin County records. Iron rod is shown as being 0.2' W. & 0.4' S of the southwest corner of Parcel A as shown on said map. Replaced with Mag Nail & Washer stamped "L.S. 6939". City of Lodi Construction Project covered over the monument. The monument may or may not have been destroyed.

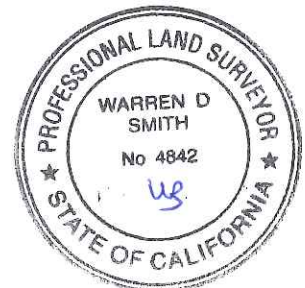
### SURVEYOR'S STATEMENT

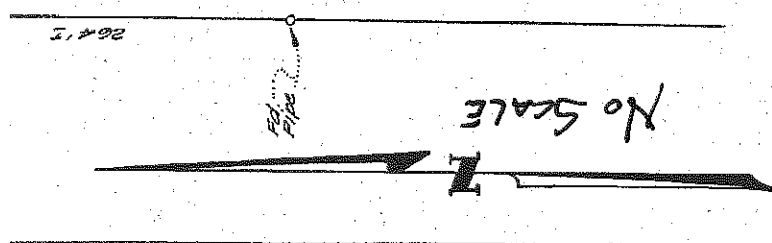
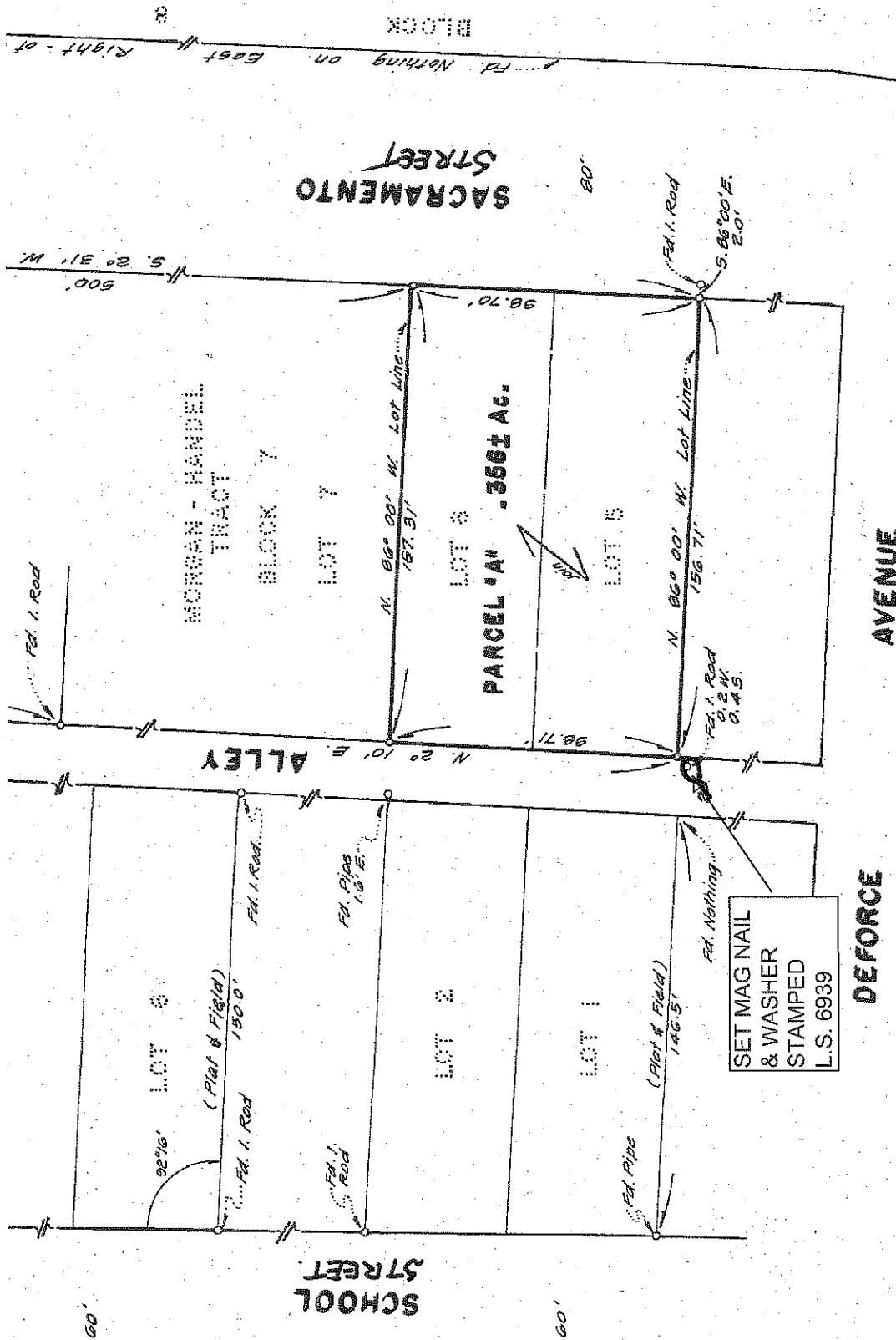
This Corner Record was prepared by me or under my direction in conformance with the Professional Land Surveyors' Act on October 5, 2017.  
 Signed Michael D. Farley P.L.S. or R.C.E. No. L/S. 6939



### COUNTY SURVEYOR'S STATEMENT

This Corner Record was received October 5, 2017 and examined and filed October 10, 2017.  
 Signed Warren D. Smith P.L.S. or R.C.E. No. 4842  
 Title County Surveyor  
 County Surveyor's Comment \_\_\_\_\_





SET MAG NAIL  
& WASHER  
STAMPED  
L.S. 6939

NOTE: