

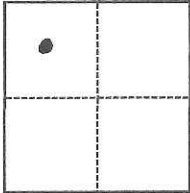
CORNER RECORD

Agency Index CR-17-330
Document Number _____

City of LODI County of SAN JOAQUIN, California
Brief Legal Description _____

CORNER TYPE

COORDINATES (Optional)



- Government Corner
- Meander
- Rancho
- Control
- Property
- Other

N. _____ E. _____
 Elevation _____
 Units Metric U.S. Survey Foot
 Horizontal Datum _____
 Zone _____ Epoch Date _____
 Vertical Datum _____
 Complies with Public Resources Code §§8801-8819
 Complies with Public Resources Code §§8890-8902

Date of Survey October 5, 2017

Sec. 1 T.3N., R.6E.

- PLS Act Ref.: 8765(d) 8771 8773 Other:
- Corner/Monument: Left as found Established Rebuilt Pre-Construction
 Found and tagged Reestablished Referenced Post-Construction

Narrative of corner identified and monument as found, set, reset, replaced, or removed:

See sheet #2 for description(s):

Fd. iron rod as shown on Parcel map Book 8, Pg. 22 San Joaquin County records. Iron rod is located at the southwest corner of Parcel A as shown on said map.
Replaced with Mag Nail & Washer stamped "L.S. 6939". City of Lodi Construction Project covered over the monument. The monument may or may not have been destroyed.

SURVEYOR'S STATEMENT

This Corner Record was prepared by me or under my direction in conformance with
 the Professional Land Surveyors' Act on October 5, 2017
 Signed Michael D. Farley P.L.S. or R.C.E. No. L/S. 6939

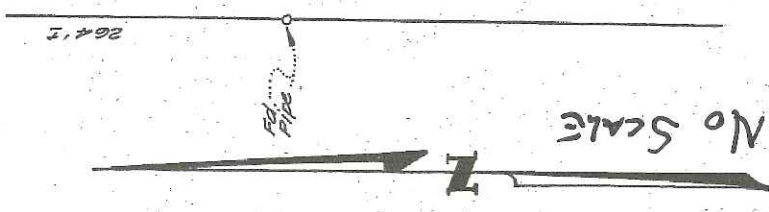
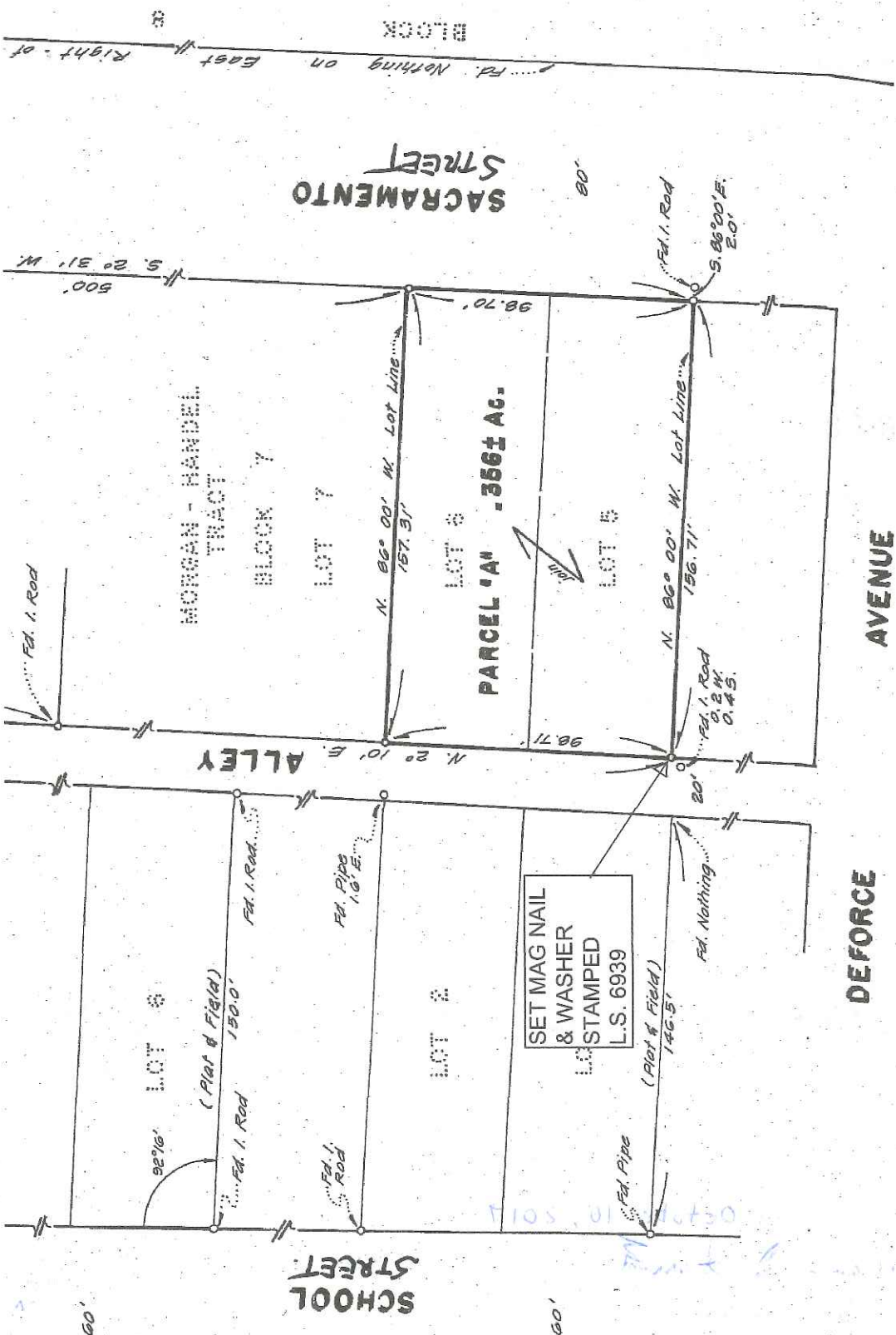


COUNTY SURVEYOR'S STATEMENT

This Corner Record was received October 5, 2017
 and examined and filed October 10, 2017
 Signed Warren D. Smith P.L.S. or R.C.E. No. 4842
 Title County Surveyor



County Surveyor's Comment



NOTE: