

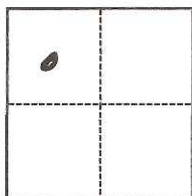
CORNER RECORD

Agency Index CR-17-328
Document Number _____

City of LODI County of SAN JOAQUIN, California
Brief Legal Description _____

CORNER TYPE

COORDINATES (Optional)



- Government Corner
- Meander
- Rancho
- Control
- Property
- Other

N. _____ E. _____
 Elevation _____
 Units Metric U.S. Survey Foot
 Horizontal Datum _____
 Zone _____ Epoch Date _____
 Vertical Datum _____
 Complies with Public Resources Code §§8801-8819
 Complies with Public Resources Code §§8890-8902

Date of Survey October 5, 2017

SEC 1 T. 3N., R. 6E.

PLS Act Ref.: 8765(d) 8771 8773 Other:
 Corner/Monument: Left as found Established Rebuilt Pre-Construction
 Found and tagged Reestablished Referenced Post-Construction

Narrative of corner identified and monument as found, set, reset, replaced, or removed:

See sheet #2 for description(s):

Fd. iron pipe as shown on Parcel map Book 8, Pg. 22 San Joaquin County records. Iron pipe is shown as being 1.6' east of the northeast corner of Lot 2 as shown on said map. Replaced with Mag Nail & Washer stamped "L.S. 6939". City of Lodi Construction Project covered over the monument. The monument may or may not have been destroyed.

SURVEYOR'S STATEMENT

This Corner Record was prepared by me or under my direction in conformance with

the Professional Land Surveyors' Act on October 5, 2017

Signed Michael D. Farley P.L.S. or R.C.E. No. L/S. 6939



COUNTY SURVEYOR'S STATEMENT

This Corner Record was received October 5, 2017

and examined and filed October 10, 2017

Signed Warren D. Smith P.L.S. or R.C.E. No. 4842

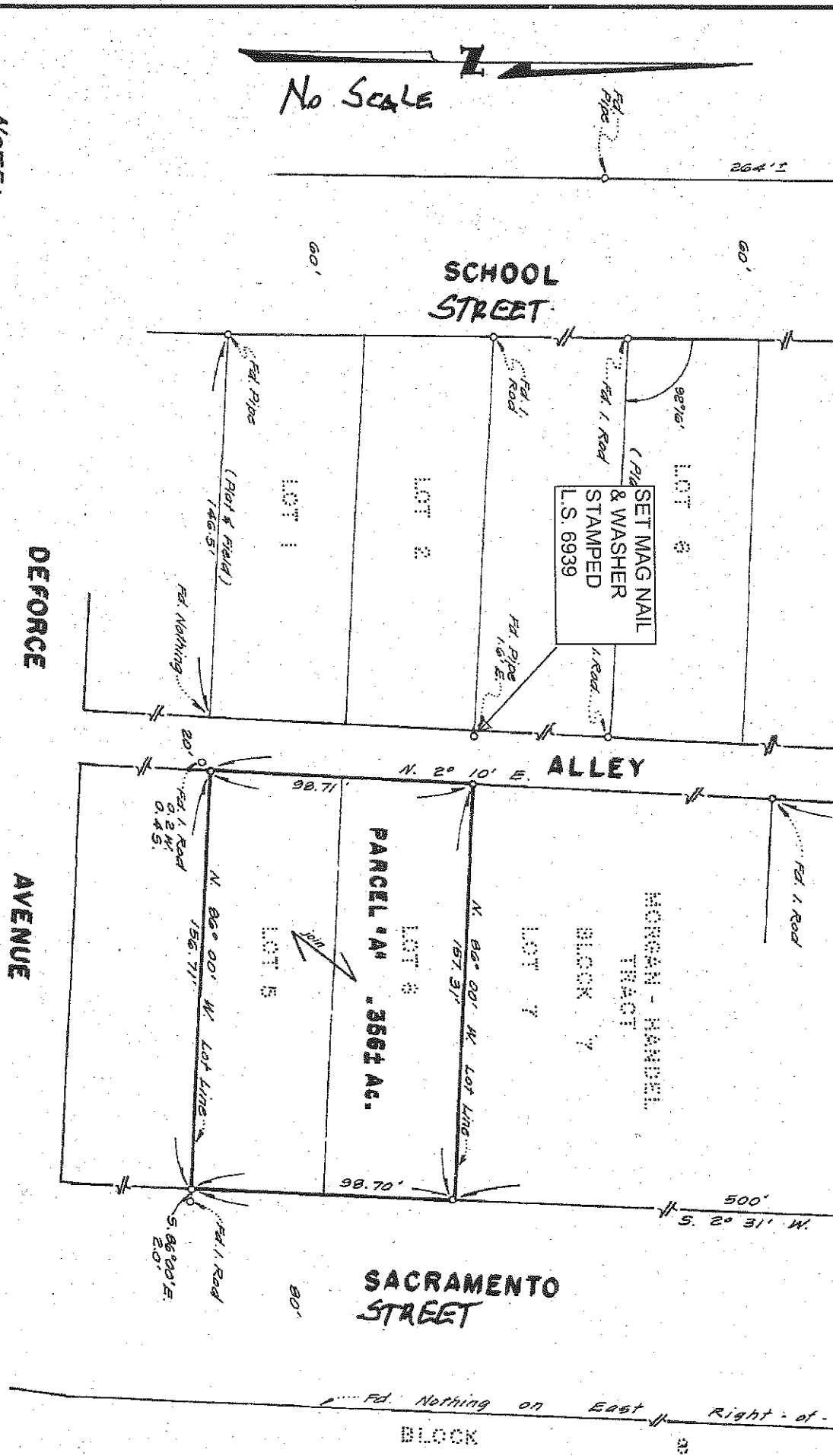
Title County Surveyor

County Surveyor's Comment _____



No Scale

NOTE:



SACRAMENTO STREET

SCHOOL STREET

DEFORCE AVENUE

ALLEY

Fed. Nothing on East Right-of-BLOCK