

# CORNER RECORD

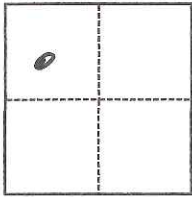
Agency Index CR-17-327  
Document Number \_\_\_\_\_

City of LODI County of SAN JOAQUIN, California

Brief Legal Description \_\_\_\_\_

### CORNER TYPE

### COORDINATES (Optional)



- Government Corner
- Meander
- Rancho
- Control
- Property
- Other

N. \_\_\_\_\_ E. \_\_\_\_\_  
 Elevation \_\_\_\_\_  
 Units  Metric  U.S. Survey Foot  
 Horizontal Datum \_\_\_\_\_  
 Zone \_\_\_\_\_ Epoch Date \_\_\_\_\_  
 Vertical Datum \_\_\_\_\_  
 Complies with Public Resources Code §§8801-8819  
 Complies with Public Resources Code §§8890-8902

Date of Survey October 5, 2017

*SEC. 1 T. 3 N., R. 6 E.*

PLS Act Ref.:  8765(d)  8771  8773  Other:  
 Corner/Monument:  Left as found  Established  Rebuilt  Pre-Construction  
 Found and tagged  Reestablished  Referenced  Post-Construction

Narrative of corner identified and monument as found, set, reset, replaced, or removed:

See sheet #2 for description(s):

Fd. iron rod as shown on Parcel map Book 8, Pg. 22 San Joaquin County records. Iron rod is shown as being at the southwest corner of lot 16 as shown on said map.  
 Replaced with Mag Nail & Washer stamped "L.S. 6939". City of Lodi Construction Project covered over the monument. The monument may or may not have been destroyed.

### SURVEYOR'S STATEMENT

This Corner Record was prepared by me or under my direction in conformance with

the Professional Land Surveyors' Act on October 5, 2017

Signed *Michael D. Farley* P.L.S. or R.C.E. No. L/S. 6939



### COUNTY SURVEYOR'S STATEMENT

This Corner Record was received October 5, 2017

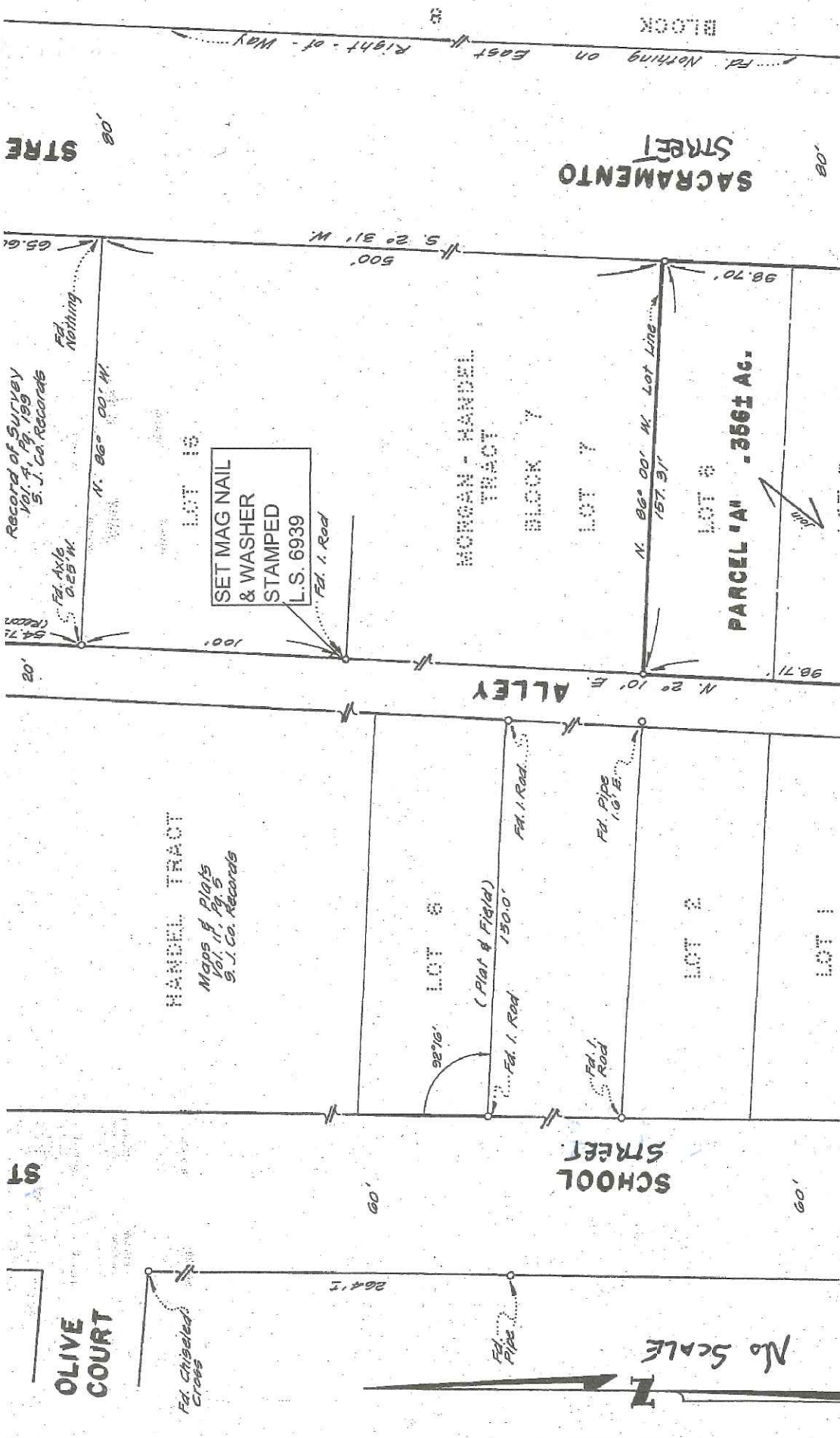
and examined and filed October 10, 2017

Signed *Warren D. Smith* P.L.S. or R.C.E. No. 4842

Title County Surveyor

County Surveyor's Comment \_\_\_\_\_





STRE

SACRAMENTO STREET

No Scale

Record of Survey  
Vol. 4, Pg. 199  
S. J. Co. Records

HANDEL TRACT  
Maps & Plats  
Vol. 11, Pg. 5  
S. J. Co. Records

SET MAG NAIL  
& WASHER  
STAMPED  
L.S. 6939

MORGAN - HANDEL  
TRACT  
BLOCK 7

PARCEL 'A' - .386± AC.

ALLEY

SCHOOL STREET

ST