

# CORNER RECORD

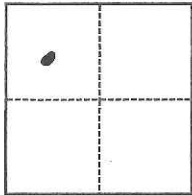
Agency Index CR-17-326  
Document Number \_\_\_\_\_

City of LODI County of SAN JOAQUIN, California

Brief Legal Description \_\_\_\_\_

### CORNER TYPE

### COORDINATES (Optional)



- Government Corner
- Meander
- Rancho
- Control
- Property
- Other

N. \_\_\_\_\_ E. \_\_\_\_\_  
 Elevation \_\_\_\_\_  
 Units  Metric  U.S. Survey Foot  
 Horizontal Datum \_\_\_\_\_  
 Zone \_\_\_\_\_ Epoch Date \_\_\_\_\_  
 Vertical Datum \_\_\_\_\_  
 Complies with Public Resources Code §§8801-8819  
 Complies with Public Resources Code §§8890-8902

Date of Survey October 5, 2017

*SEC. 1 T. 3 N., R. 6 E.*

- PLS Act Ref.:  8765(d)  8771  8773  Other:
- Corner/Monument:  Left as found  Established  Rebuilt  Pre-Construction  
 Found and tagged  Reestablished  Referenced  Post-Construction

Narrative of corner identified and monument as found, set, reset, replaced, or removed:

See sheet #2 for description(s):

Fd. axle as shown on Parcel map Book 8, Pg. 22 San Joaquin County records. Axle is shown as being 0.25' west of lot 16 & 17 as shown on said map.

Replaced with Mag Nail & Washer stamped "L.S. 6939". City of Lodi Construction Project covered over the monument. The monument may or may not have been destroyed.

### SURVEYOR'S STATEMENT

This Corner Record was prepared by me or under my direction in conformance with

the Professional Land Surveyors' Act on October 5, 2017

Signed *Michael D. Farley* P.L.S. or R.C.E. No. L/S. 6939



### COUNTY SURVEYOR'S STATEMENT

This Corner Record was received October 5, 2017

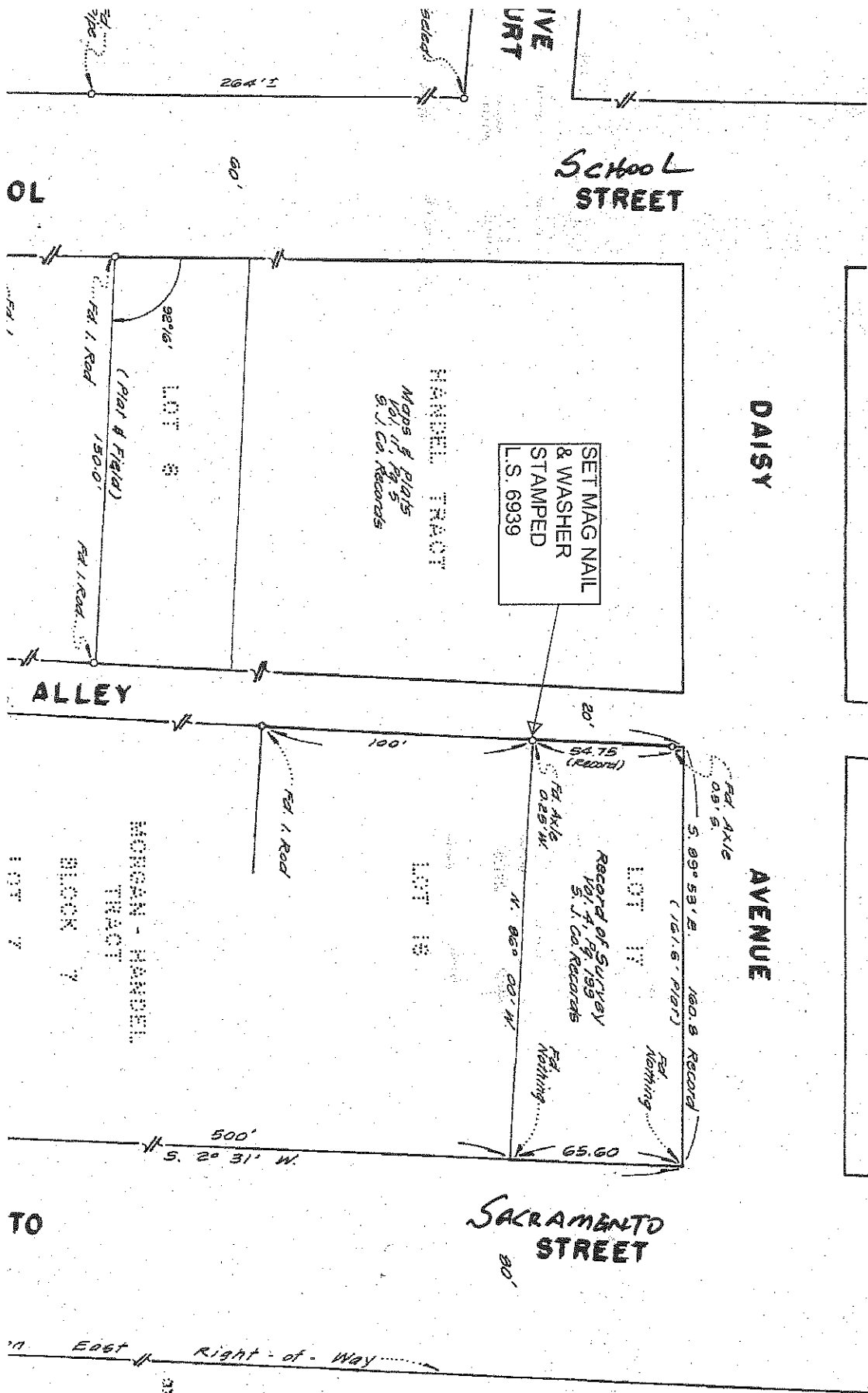
and examined and filed October 10, 2017

Signed *Warren D. Smith* P.L.S. or R.C.E. No. 4842

Title County Surveyor

County Surveyor's Comment \_\_\_\_\_





SET MAG NAIL  
& WASHER  
STAMPED  
L.S. 6939

Record of Survey  
1914, 1919  
S. J. Co. Records

No SCALE

