

CORNER RECORD

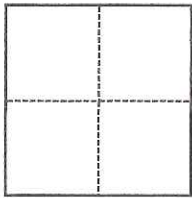
Agency Index CR-17-323
Document Number _____

City of LODI County of SAN JOAQUIN, California

Brief Legal Description _____

CORNER TYPE

COORDINATES (Optional)



- Government Corner
- Meander
- Rancho
- Control
- Property
- Other

Date of Survey October 5, 2017

N. _____ E. _____
 Elevation _____
 Units Metric U.S. Survey Foot
 Horizontal Datum _____
 Zone _____ Epoch Date _____
 Vertical Datum _____
 Complies with Public Resources Code §§8801-8819
 Complies with Public Resources Code §§8890-8902

SEC. 12 T. 3 N., R. 6 E.

- PLS Act Ref.: 8765(d) 8771 8773 Other: _____
- Corner/Monument: Left as found Established Rebuilt Pre-Construction
 Found and tagged Reestablished Referenced Post-Construction

Narrative of corner identified and monument as found, set, reset, replaced, or removed:

See sheet #2 for description(s):

Fd. 1" Iron pin at the northeast corner of Block 2 of Central Tract Subdivision filed in Maps & Plats Volume 10, Page 78, San Joaquin County records.

Set Chiseled cross and brass tag stamped L.S. 6939

SURVEYOR'S STATEMENT

This Corner Record was prepared by me or under my direction in conformance with

the Professional Land Surveyors' Act on October 5, 2017

Signed Michael D. Farley P.L.S. or R.C.E. No. L/S. 6939



COUNTY SURVEYOR'S STATEMENT

This Corner Record was received October 5, 2017

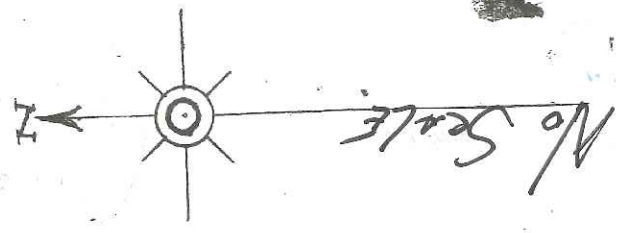
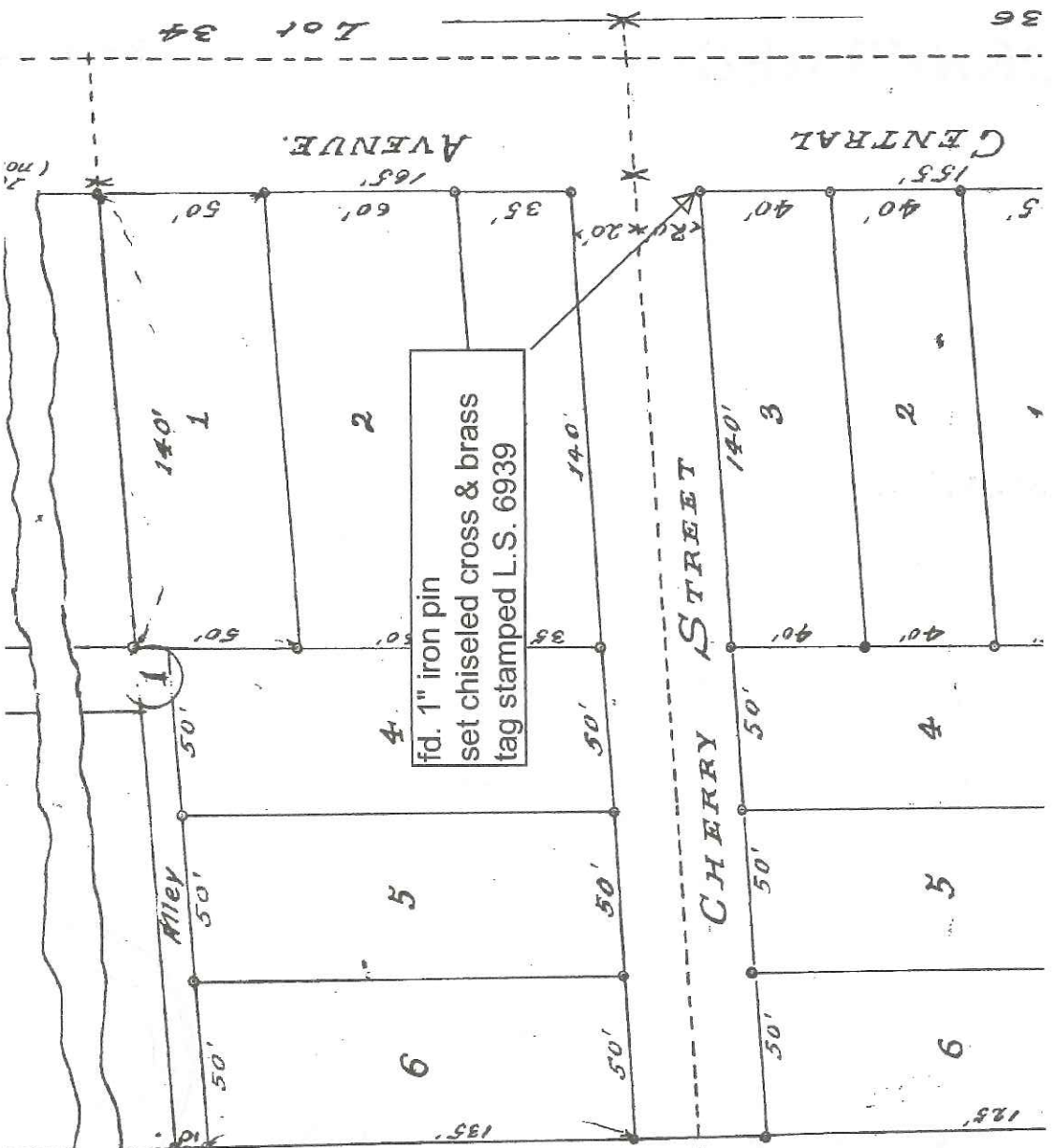
and examined and filed October 10, 2017

Signed Warren D. Smith P.L.S. or R.C.E. No. 4842

Title County Surveyor

County Surveyor's Comment _____





36
Lot 34

CENTRAL AVENUE

CHERRY STREET

fd. 1" iron pin
set chiseled cross & brass
tag stamped L.S. 6939

140' 1
140' 2
140' 3
140' 4
140' 5
140' 6
140' 7
140' 8
140' 9
140' 10
140' 11
140' 12
140' 13
140' 14
140' 15
140' 16
140' 17
140' 18
140' 19
140' 20
140' 21
140' 22
140' 23
140' 24
140' 25
140' 26
140' 27
140' 28
140' 29
140' 30
140' 31
140' 32
140' 33
140' 34
140' 35
140' 36
140' 37
140' 38
140' 39
140' 40
140' 41
140' 42
140' 43
140' 44
140' 45
140' 46
140' 47
140' 48
140' 49
140' 50
140' 51
140' 52
140' 53
140' 54
140' 55
140' 56
140' 57
140' 58
140' 59
140' 60
140' 61
140' 62
140' 63
140' 64
140' 65
140' 66
140' 67
140' 68
140' 69
140' 70
140' 71
140' 72
140' 73
140' 74
140' 75
140' 76
140' 77
140' 78
140' 79
140' 80
140' 81
140' 82
140' 83
140' 84
140' 85
140' 86
140' 87
140' 88
140' 89
140' 90
140' 91
140' 92
140' 93
140' 94
140' 95
140' 96
140' 97
140' 98
140' 99
140' 100

ALLEY