

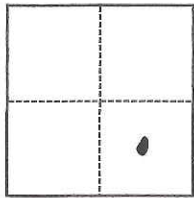
CORNER RECORD

Agency Index CR-17-322
 Document Number _____

City of LODI County of SAN JOAQUIN, California

Brief Legal Description _____

CORNER TYPE



- Government Corner Control
 Meander Property
 Rancho Other

Date of Survey October 5, 2017

Sec 12 T.3N., R.6E.

COORDINATES (Optional)

N. _____ E. _____
 Elevation _____
 Units Metric U.S. Survey Foot
 Horizontal Datum _____
 Zone _____ Epoch Date _____
 Vertical Datum _____
 Complies with Public Resources Code §§8801-8819
 Complies with Public Resources Code §§8890-8902

PLS Act Ref.: 8765(d) 8771 8773 Other:
 Corner/
 Monument: Left as found Established Rebuilt Pre-Construction
 Found and tagged Reestablished Referenced Post-Construction

Narrative of corner identified and monument as found, set, reset, replaced, or removed:

See sheet #2 for description(s):

Fd. Axle at the southwest corner of Block 2 of "Wellswood Park Subdivision"

Set Chiseled cross and brass tag stamped L.S. 6939

SURVEYOR'S STATEMENT

This Corner Record was prepared by me or under my direction in conformance with

the Professional Land Surveyors' Act on October 5, 2017

Signed Michael D. Farley P.L.S. or R.C.E. No. L/S. 6939



COUNTY SURVEYOR'S STATEMENT

This Corner Record was received October 5, 2017

and examined and filed October 10, 2017

Signed Warren D. Smith P.L.S. or R.C.E. No. 4842

Title County Surveyor

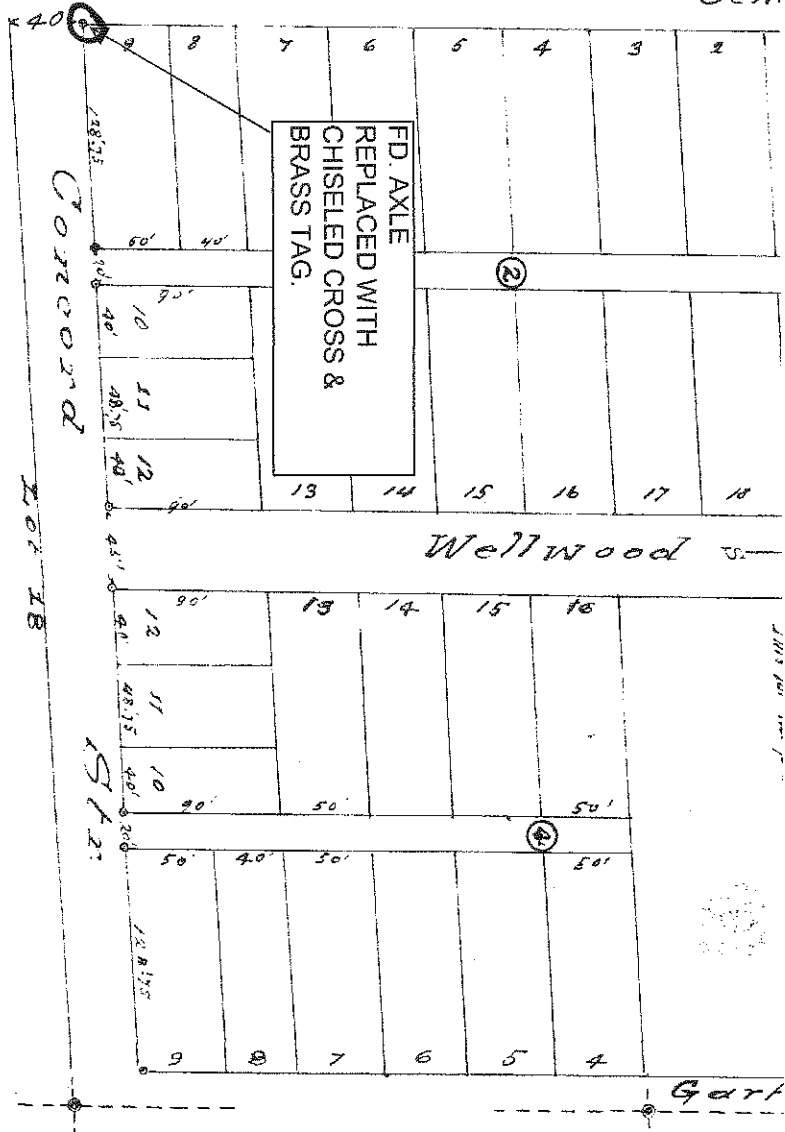
County Surveyor's Comment _____



CENTRAL AVENUE

330'
Lot 19

1/2
Cent.

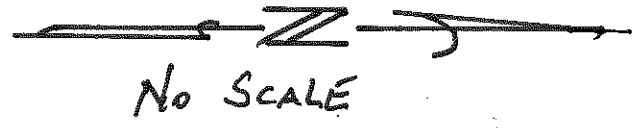


a subdivision of part of Lot 19 and of Lots 18 and 21 of the Todd Barnhart Tract
it being

WELLWOOD PARK

Scale 1" = 80'

W. F. Shays & Co. C. E.



I, J. W. Stuckman, supervisor for the
 users of the County of San Joaquin, do
 hereby certify that the above plat
 of Wellwood Park County,
 that a proper bond has been filed in,
 pursuant to the resolution adopted at
 a meeting of said Board of Supervisors
 on the 12th day of March, 1911.