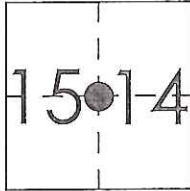


CORNER RECORD

Agency Index CR-17-315
 Document Number _____

City of _____ County of San Joaquin, California
 Brief Legal Description Sowles Road 2634± North of Peltier Road



T4N R7E
 MDB&M

CORNER TYPE

Government Corner Control
 Meander Property
 Rancho Other
 Date of Survey September 08, 2017

COORDINATES (Optional)

N. _____ E. _____
 Elevation. _____
 Units Metric U.S. Survey Foot
 Horizontal Datum _____
 Zone _____ Epoch Date _____
 Vertical Datum _____
 Complies with Public Resources Code §§8801-8819
 Complies with Public Resources Code §§8890-8902

PLS Act Ref.: 8765(d) 8771 8773 Other:
 Corner/Monument: Left as found Established Rebuilt Pre-Construction
 Found and tagged Reestablished Referenced Post-Construction

Narrative of corner identified and monument as found, set, reset, replaced, or removed:
 See sheet #2 for description(s):

SURVEYOR'S STATEMENT

This Corner Record was prepared by me or under my direction in conformance with
 the Professional Land Surveyor's Act on September 22, 2017
 Signed James E. Hart P.L.S. or R.C.E. No. 8657



COUNTY SURVEYOR'S STATEMENT

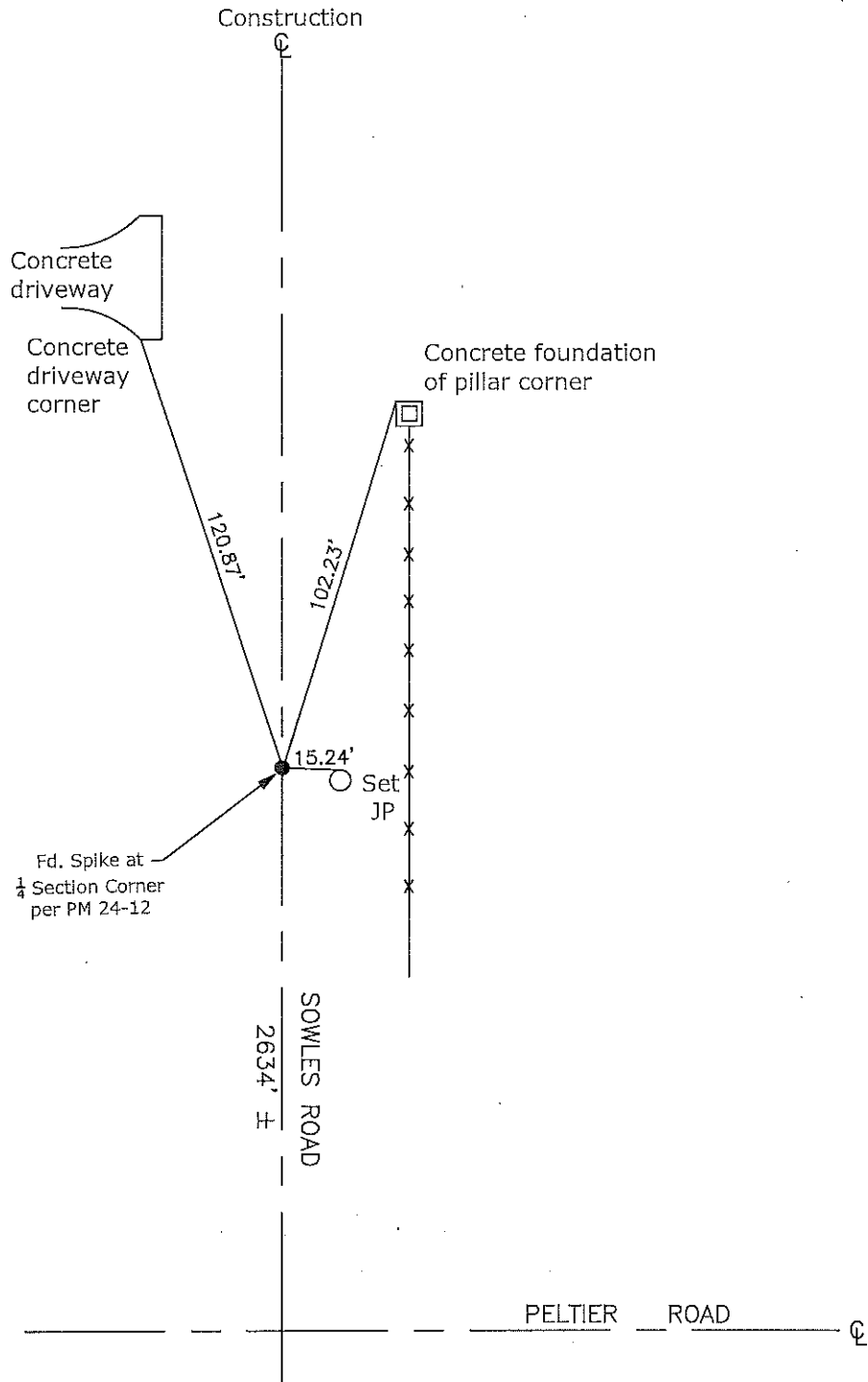
This Corner Record was received September 29, 2017
 and examined and filed October 10, 2017
 Signed Warren D. Smith P.L.S. or R.C.E. No. 4842
 Title County Surveyor



County Surveyor's Comment



N.T.S.



CR=Corner Record
 FP=Fence Post
 JP=Joint Pole
 LP=Light Pole
 PP=Power Pole
 GP=Guy Pole
 SP=Service Pole
 TP=Telephone Pole
 S.F.N.=Searched Found Nothing
 N.T.S.=Not To Scale
 M&P=Maps & Plats
 PM=Parcel Map
 RS=Record of Survey
 FB=Field Book
 N=North
 DI=Drain Inlet
 TOC=Top of Curb

Set=Conc. Nail with Brass Washer Stamped
 "S.J. Co.", unless otherwise noted
 Fd.=Found Conc. Nail with Brass Washer Stamped
 "S.J. Co.", unless otherwise noted
 Note: Found Monuments are not tagged
 unless otherwise noted.

"No Attempt Was Made to Verify the Monument(s)"