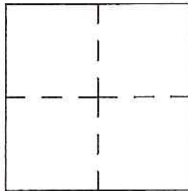


# CORNER RECORD

Agency Index CR-17-313  
 Document Number \_\_\_\_\_

City of \_\_\_\_\_ County of San Joaquin, California

Brief Legal Description Sowles Road 1317± North of Peltier Road  
On east line of Section 15, Township 4 North, Range 7 East, Mount Diablo Base & Meridian



**CORNER TYPE**

Government Corner  Control   
 Meander  Property   
 Rancho  Other

Date of Survey September 08, 2017

**COORDINATES (Optional)**

N. \_\_\_\_\_ E. \_\_\_\_\_  
 Elevation. \_\_\_\_\_  
 Units Metric  U.S. Survey Foot   
 Horizontal Datum \_\_\_\_\_  
 Zone \_\_\_\_\_ Epoch Date \_\_\_\_\_  
 Vertical Datum \_\_\_\_\_  
 Complies with Public Resources Code §§8801-8819  
 Complies with Public Resources Code §§8890-8902

PLS Act Ref.:  8765(d)  8771  8773  Other:

Corner/  
Monument:  Left as found  Established  Rebuilt  Pre-Construction  
 Found and tagged  Reestablished  Referenced  Post-Construction

Narrative of corner identified and monument as found, set, reset, replaced, or removed:  
 See sheet #2 for description(s):

## SURVEYOR'S STATEMENT

This Corner Record was prepared by me or under my direction in conformance with  
 the Professional Land Surveyor's Act on September 22, 2017  
 Signed James E. Hart P.L.S. or R.C.E. No. 8657



## COUNTY SURVEYOR'S STATEMENT

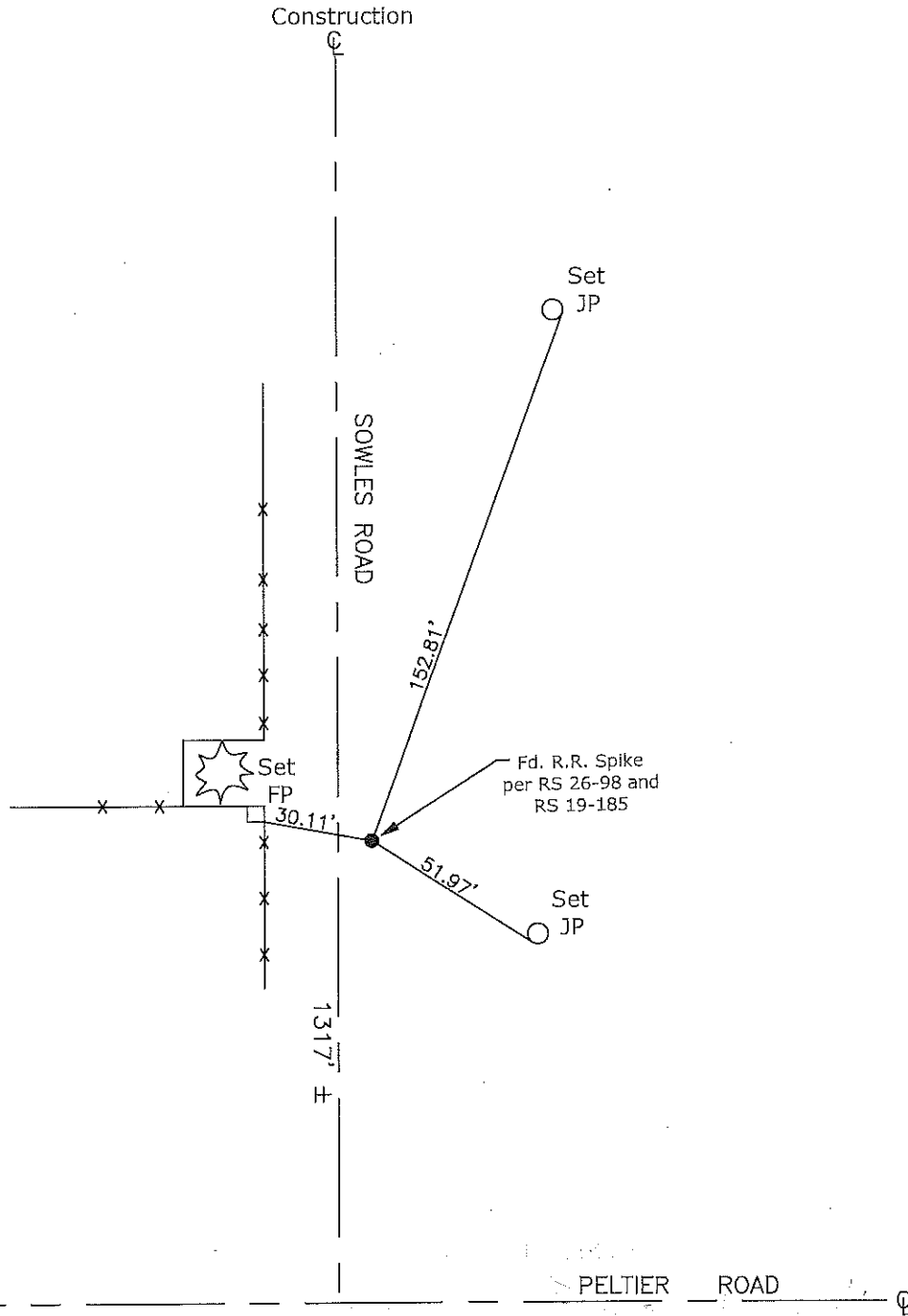
This Corner Record was received September 29, 2017  
 and examined and filed October 10, 2017  
 Signed Warren D. Smith P.L.S. or R.C.E. No. 4842  
 Title County Surveyor



County Surveyor's Comment



N.T.S.



CR=Corner Record  
 FP=Fence Post  
 JP=Joint Pole  
 LP=Light Pole  
 PP=Power Pole  
 GP=Guy Pole  
 SP=Service Pole  
 TP=Telephone Pole  
 S.F.N.=Searched Found Nothing  
 N.T.S.=Not To Scale  
 M&P=Maps & Plats  
 PM=Parcel Map  
 RS=Record of Survey  
 FB=Field Book  
 N=North  
 DI=Drain Inlet  
 TOC=Top of Curb

Set=Conc. Nail with Brass Washer Stamped  
 "S.J. Co.", unless otherwise noted  
 Fd.=Found Conc. Nail with Brass Washer Stamped  
 "S.J. Co.", unless otherwise noted  
 Note: Found Monuments are not tagged  
 unless otherwise noted.

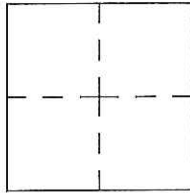
"No Attempt Was Made to Verify the Monument(s)"

# CORNER RECORD

Agency Index CR-17-314  
 Document Number \_\_\_\_\_

City of \_\_\_\_\_ County of San Joaquin, California

Brief Legal Description Sowles Road 1665± North of Peltier Road  
On east line of Section 15, Township 4 North, Range 7 East, Mount Diablo Base & Meridian



**CORNER TYPE**

Government Corner  Control   
 Meander  Property   
 Rancho  Other

Date of Survey September 08, 2017

**COORDINATES (Optional)**

N. \_\_\_\_\_ E. \_\_\_\_\_  
 Elevation. \_\_\_\_\_  
 Units Metric  U.S. Survey Foot   
 Horizontal Datum \_\_\_\_\_  
 Zone \_\_\_\_\_ Epoch Date \_\_\_\_\_  
 Vertical Datum \_\_\_\_\_

Complies with Public Resources Code §§8801-8819  
 Complies with Public Resources Code §§8890-8902

PLS Act Ref.:  8765(d)  8771  8773  Other:

Corner/  
Monument:  Left as found  Established  Rebuilt  Pre-Construction  
 Found and tagged  Reestablished  Referenced  Post-Construction

Narrative of corner identified and monument as found, set, reset, replaced, or removed:  
 See sheet #2 for description(s):

## SURVEYOR'S STATEMENT

This Corner Record was prepared by me or under my direction in conformance with  
 the Professional Land Surveyor's Act on September 22, 2017  
 Signed James E. Hart P.L.S. or R.C.E. No. 8657



## COUNTY SURVEYOR'S STATEMENT

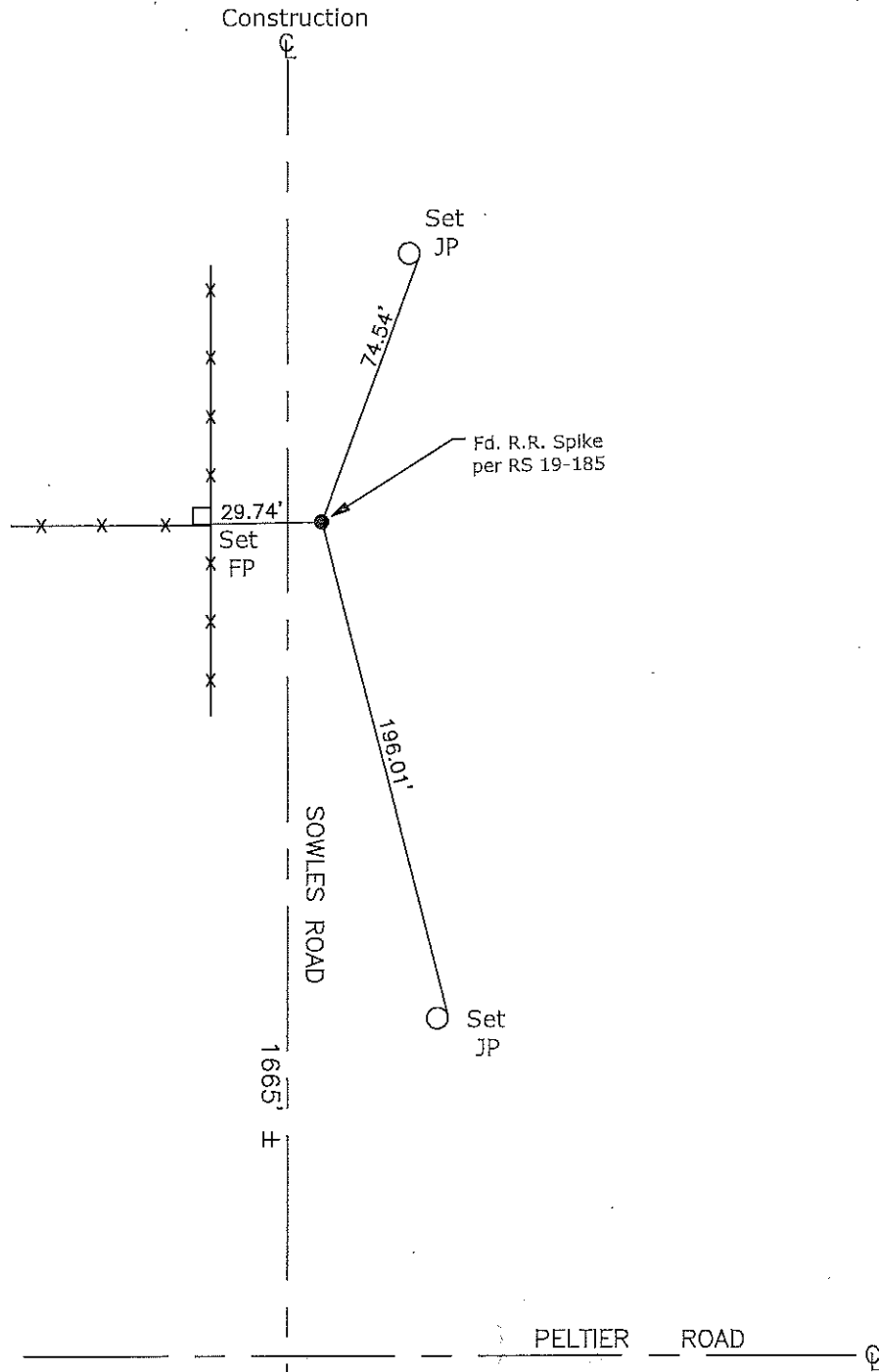
This Corner Record was received September 29, 2017  
 and examined and filed October 10, 2017  
 Signed Warren D. Smith P.L.S. or R.C.E. No. 4842  
 Title County Surveyor



County Surveyor's Comment



N.T.S.



- CR=Corner Record
- FP=Fence Post
- JP=Joint Pole
- LP=Light Pole
- PP=Power Pole
- GP=Guy Pole
- SP=Service Pole
- TP=Telephone Pole
- S.F.N.=Searched Found Nothing
- N.T.S.=Not To Scale
- M&P=Maps & Plats
- PM=Parcel Map
- RS=Record of Survey
- FB=Field Book
- N=North
- DI=Drain Inlet
- TOC=Top of Curb

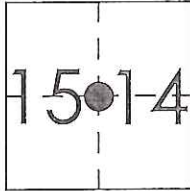
Set=Conc. Nail with Brass Washer Stamped  
 "S.J. Co.", unless otherwise noted  
 Fd.=Found Conc. Nail with Brass Washer Stamped  
 "S.J. Co.", unless otherwise noted  
 Note: Found Monuments are not tagged  
 unless otherwise noted.

"No Attempt Was Made to Verify the Monument(s)"

# CORNER RECORD

Agency Index CR-17-315  
 Document Number \_\_\_\_\_

City of \_\_\_\_\_ County of San Joaquin, California  
 Brief Legal Description Sowles Road 2634± North of Peltier Road



T4N R7E  
 MDB&M

### CORNER TYPE

Government Corner  Control   
 Meander  Property   
 Rancho  Other   
 Date of Survey September 08, 2017

### COORDINATES (Optional)

N. \_\_\_\_\_ E. \_\_\_\_\_  
 Elevation. \_\_\_\_\_  
 Units Metric  U.S. Survey Foot   
 Horizontal Datum \_\_\_\_\_  
 Zone \_\_\_\_\_ Epoch Date \_\_\_\_\_  
 Vertical Datum \_\_\_\_\_  
 Complies with Public Resources Code §§8801-8819  
 Complies with Public Resources Code §§8890-8902

PLS Act Ref.:  8765(d)  8771  8773  Other:  
 Corner/Monument:  Left as found  Established  Rebuilt  Pre-Construction  
 Found and tagged  Reestablished  Referenced  Post-Construction

Narrative of corner identified and monument as found, set, reset, replaced, or removed:  
 See sheet #2 for description(s):

### SURVEYOR'S STATEMENT

This Corner Record was prepared by me or under my direction in conformance with  
 the Professional Land Surveyor's Act on September 22, 2017  
 Signed James E. Hart P.L.S. or R.C.E. No. 8657



### COUNTY SURVEYOR'S STATEMENT

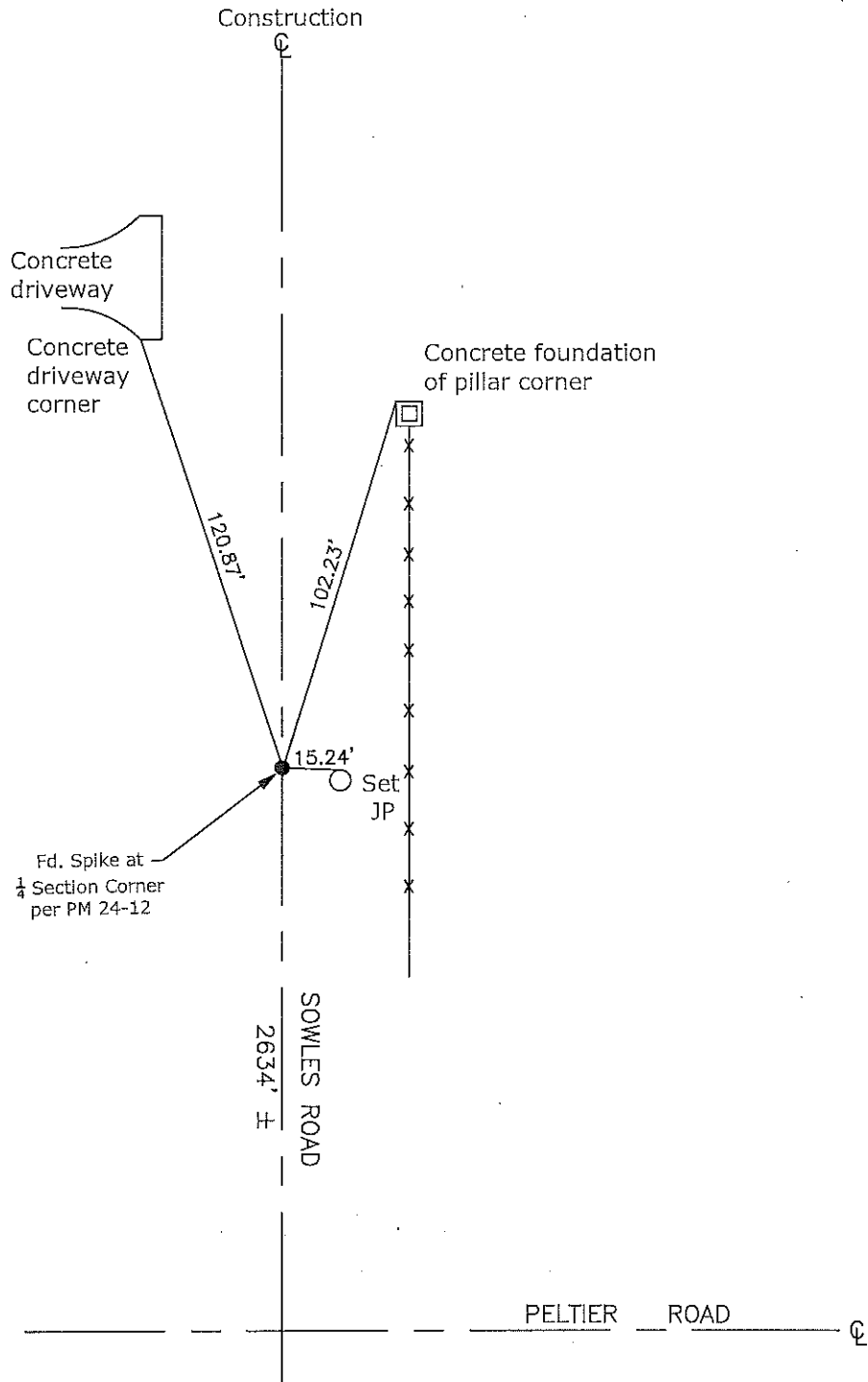
This Corner Record was received September 29, 2017  
 and examined and filed October 10, 2017  
 Signed Warren D. Smith P.L.S. or R.C.E. No. 4842  
 Title County Surveyor



County Surveyor's Comment



N.T.S.



CR=Corner Record  
 FP=Fence Post  
 JP=Joint Pole  
 LP=Light Pole  
 PP=Power Pole  
 GP=Guy Pole  
 SP=Service Pole  
 TP=Telephone Pole  
 S.F.N.=Searched Found Nothing  
 N.T.S.=Not To Scale  
 M&P=Maps & Plats  
 PM=Parcel Map  
 RS=Record of Survey  
 FB=Field Book  
 N=North  
 DI=Drain Inlet  
 TOC=Top of Curb

Set=Conc. Nail with Brass Washer Stamped  
 "S.J. Co.", unless otherwise noted  
 Fd.=Found Conc. Nail with Brass Washer Stamped  
 "S.J. Co.", unless otherwise noted  
 Note: Found Monuments are not tagged  
 unless otherwise noted.

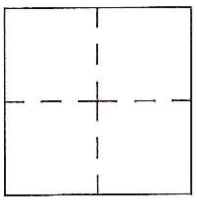
"No Attempt Was Made to Verify the Monument(s)"

# CORNER RECORD

Agency Index CR-17-316  
Document Number \_\_\_\_\_

City of \_\_\_\_\_ County of San Joaquin, California

Brief Legal Description Sowles Road 1310'± South of Jahant Road  
On east line of Section 15, Township 4 North, Range 7 East, Mount Diablo Base & Meridian



### CORNER TYPE

- Government Corner  Control
- Meander  Property
- Rancho  Other

Date of Survey September 08, 2017

### COORDINATES (Optional)

N. \_\_\_\_\_ E. \_\_\_\_\_  
 Elevation. \_\_\_\_\_  
 Units Metric  U.S. Survey Foot   
 Horizontal Datum \_\_\_\_\_  
 Zone \_\_\_\_\_ Epoch Date \_\_\_\_\_  
 Vertical Datum \_\_\_\_\_

- Complies with Public Resources Code §§8801-8819
- Complies with Public Resources Code §§8890-8902

- PLS Act Ref.:  8765(d)  8771  8773  Other:
- Corner/Monument:  Left as found  Established  Rebuilt  Pre-Construction  
 Found and tagged  Reestablished  Referenced  Post-Construction

Narrative of corner identified and monument as found, set, reset, replaced, or removed:  
 See sheet #2 for description(s):

### SURVEYOR'S STATEMENT

This Corner Record was prepared by me or under my direction in conformance with  
 the Professional Land Surveyor's Act on September 22, 2017  
 Signed James E. Hart P.L.S. or R.C.E. No. 8657



### COUNTY SURVEYOR'S STATEMENT

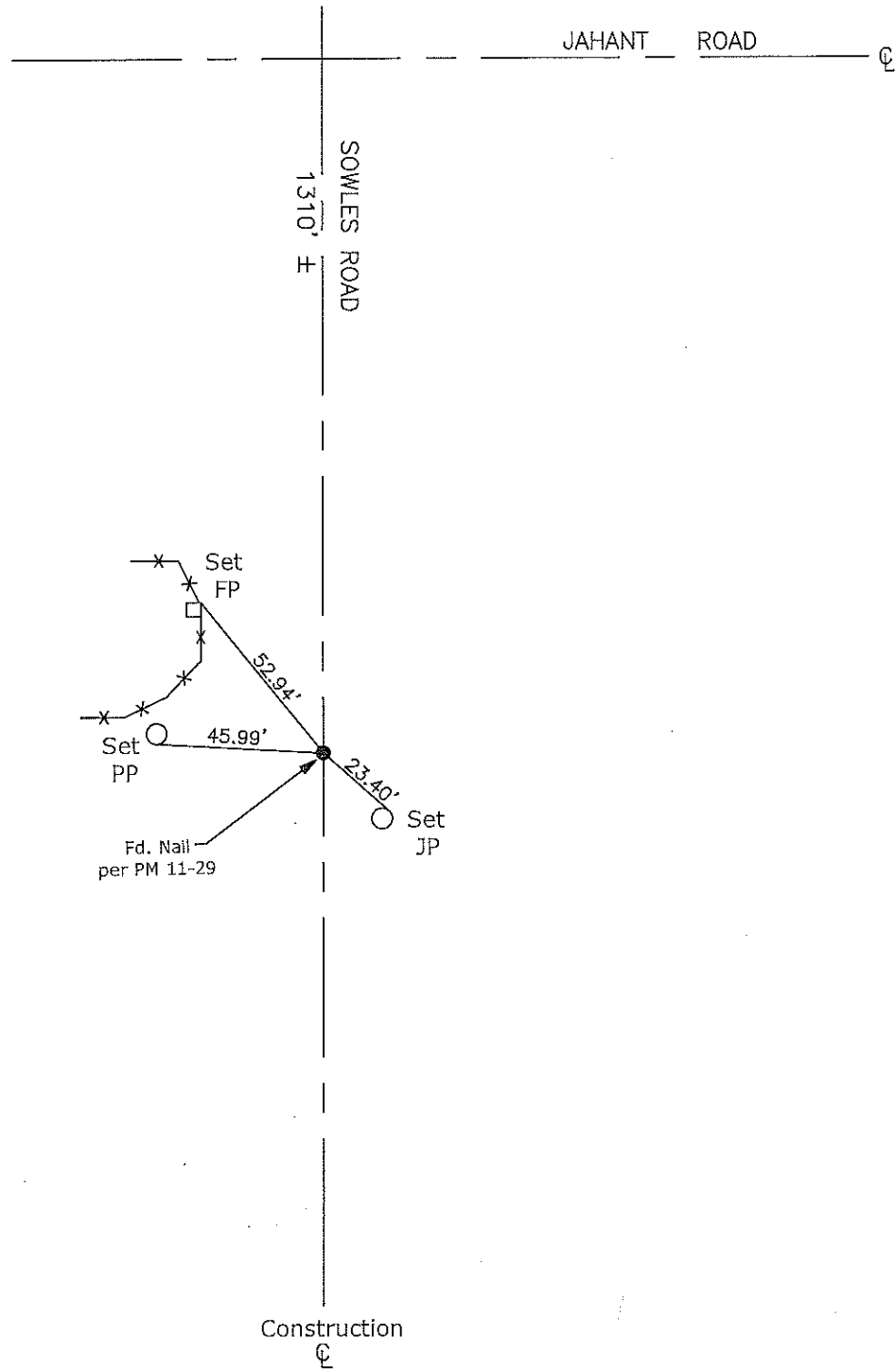
This Corner Record was received September 29, 2017  
 and examined and filed October 10, 2017  
 Signed Warren D. Smith P.L.S. or R.C.E. No. 4842  
 Title \_\_\_\_\_ County Surveyor



County Surveyor's Comment



N.T.S.



- CR=Corner Record
- FP=Fence Post
- JP=Joint Pole
- LP=Light Pole
- PP=Power Pole
- GP=Guy Pole
- SP=Service Pole
- TP=Telephone Pole
- S.F.N.=Searched Found Nothing
- N.T.S.=Not To Scale
- M&P=Maps & Plats
- PM=Parcel Map
- RS=Record of Survey
- FB=Field Book
- N=North
- DI=Drain Inlet
- TOC=Top of Curb

Set=Conc. Nail with Brass Washer Stamped  
 "S.J. Co.", unless otherwise noted  
 Fd.=Found Conc. Nail with Brass Washer Stamped  
 "S.J. Co.", unless otherwise noted  
 Note: Found Monuments are not tagged  
 unless otherwise noted.

"No Attempt Was Made to Verify the Monument(s)"



# CORNER RECORD

Agency Index CR-17-317  
Document Number \_\_\_\_\_

City of \_\_\_\_\_ County of San Joaquin, California  
Brief Legal Description Sowles Road @ Underwood Road



T4N R7E  
MDB&M

### CORNER TYPE

Government Corner  Control   
Meander  Property   
Rancho  Other   
Date of Survey September 08, 2017

### COORDINATES (Optional)

N. \_\_\_\_\_ E. \_\_\_\_\_  
Elevation. \_\_\_\_\_  
Units Metric  U.S. Survey Foot   
Horizontal Datum \_\_\_\_\_  
Zone \_\_\_\_\_ Epoch Date \_\_\_\_\_  
Vertical Datum \_\_\_\_\_  
 Complies with Public Resources Code §§8801-8819  
 Complies with Public Resources Code §§8890-8902

PLS Act Ref.:  8765(d)  8771  8773  Other:  
Corner/Monument:  Left as found  Established  Rebuilt  Pre-Construction  
 Found and tagged  Reestablished  Referenced  Post-Construction

Narrative of corner identified and monument as found, set, reset, replaced, or removed:  
 See sheet #2 for description(s):

### SURVEYOR'S STATEMENT

This Corner Record was prepared by me or under my direction in conformance with  
the Professional Land Surveyor's Act on September 22, 2017  
Signed James E. Hart P.L.S. or R.C.E. No. 8657



### COUNTY SURVEYOR'S STATEMENT

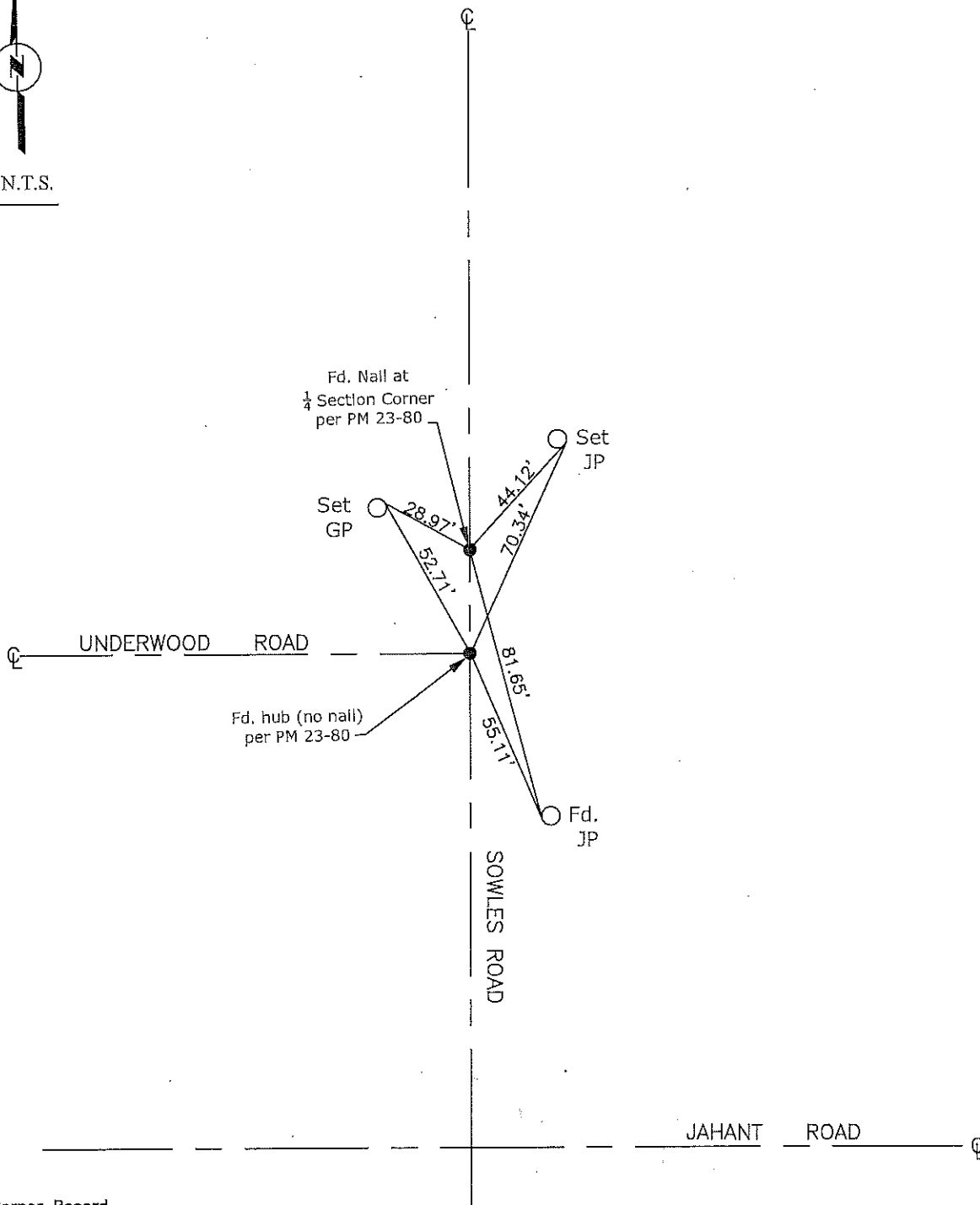
This Corner Record was received September 29, 2017  
and examined and filed October 10, 2017  
Signed Warren D. Smith P.L.S. or R.C.E. No. 4842  
Title County Surveyor



### County Surveyor's Comment



N.T.S.



CR=Corner Record  
 FP=Fence Post  
 JP=Joint Pole  
 LP=Light Pole  
 PP=Power Pole  
 GP=Guy Pole  
 SP=Service Pole  
 TP=Telephone Pole  
 S.F.N.=Searched Found Nothing  
 N.T.S.=Not To Scale  
 M&P=Maps & Plats  
 PM=Parcel Map  
 RS=Record of Survey  
 FB=Field Book  
 N=North  
 DI=Drain Inlet  
 TOC=Top of Curb

Set=Conc. Nail with Brass Washer Stamped  
 "S.J. Co.", unless otherwise noted  
 Fd.=Found Conc. Nail with Brass Washer Stamped  
 "S.J. Co.", unless otherwise noted  
 Note: Found Monuments are not tagged  
 unless otherwise noted.

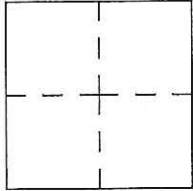
"No Attempt Was Made to Verify the Monument(s)"

# CORNER RECORD

Agency Index CR-17-318  
Document Number \_\_\_\_\_

City of \_\_\_\_\_ County of San Joaquin, California

Brief Legal Description Sowles Road 2310'± South of Collier Road  
On east line of Section 10, Township 4 North, Range 7 East, Mount Diablo Base & Meridian



**CORNER TYPE**

Government Corner  Control  Elevation. \_\_\_\_\_  
 Meander  Property  Units Metric  U.S. Survey Foot   
 Rancho  Other  Horizontal Datum \_\_\_\_\_  
 Date of Survey September 08, 2017 Zone \_\_\_\_\_ Epoch Date \_\_\_\_\_  
 Vertical Datum \_\_\_\_\_  
 Complies with Public Resources Code §§8801-8819  
 Complies with Public Resources Code §§8890-8902

PLS Act Ref.:  8765(d)  8771  8773  Other: \_\_\_\_\_  
 Corner/Monument:  Left as found  Established  Rebuilt  Pre-Construction  
 Found and tagged  Reestablished  Referenced  Post-Construction

Narrative of corner identified and monument as found, set, reset, replaced, or removed:  
 See sheet #2 for description(s):

### SURVEYOR'S STATEMENT

This Corner Record was prepared by me or under my direction in conformance with the Professional Land Surveyor's Act on September 22, 2017.  
Signed James E Hart P.L.S. or R.C.E. No. 8657

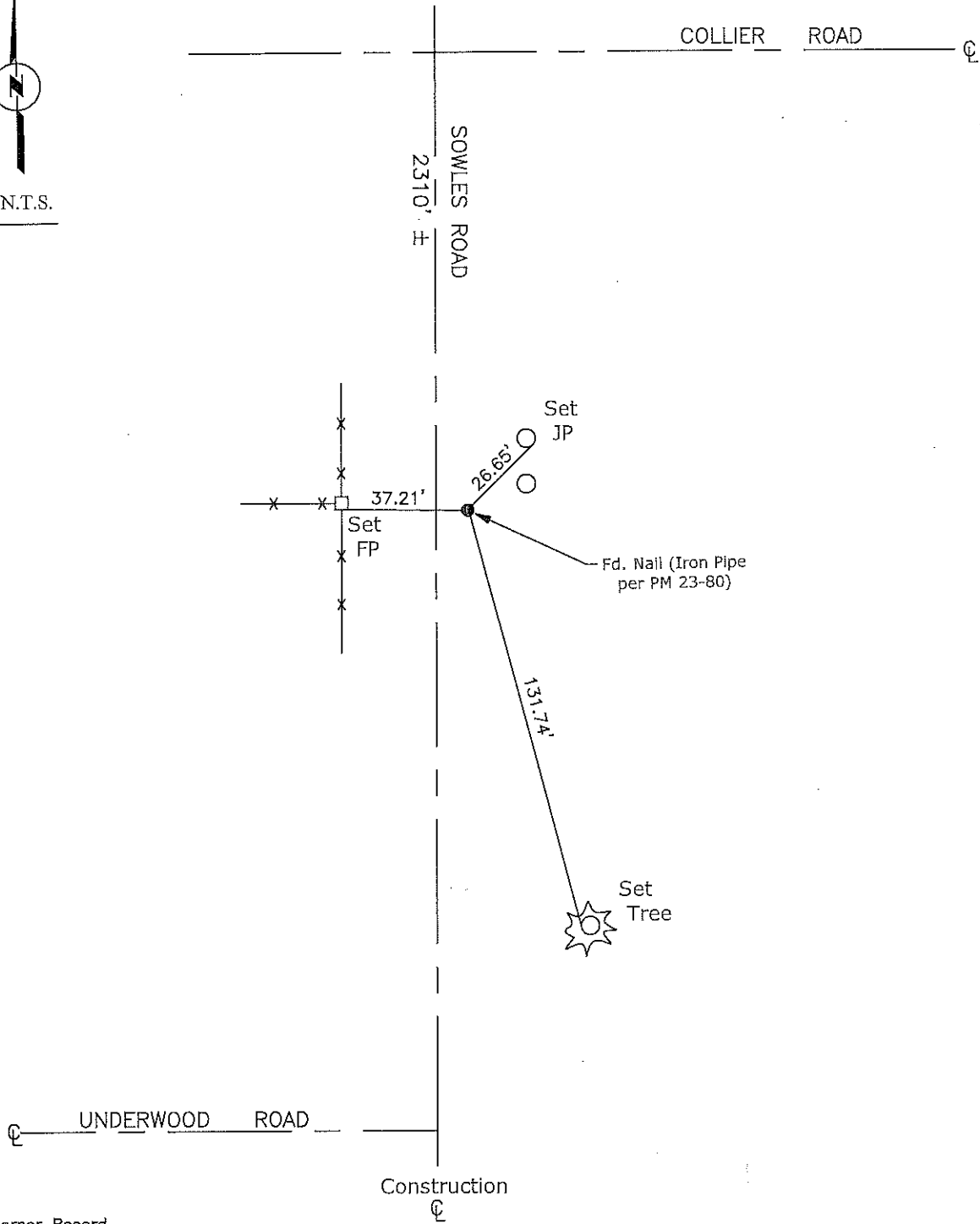


### COUNTY SURVEYOR'S STATEMENT

This Corner Record was received September 29, 2017  
and examined and filed October 10, 2017  
Signed Warren D. Smith P.L.S. or R.C.E. No. 4842  
Title County Surveyor



County Surveyor's Comment



- CR=Corner Record
- FP=Fence Post
- JP=Joint Pole
- LP=Light Pole
- PP=Power Pole
- GP=Guy Pole
- SP=Service Pole
- TP=Telephone Pole
- S.F.N.=Searched Found Nothing
- N.T.S.=Not To Scale
- M&P=Maps & Plats
- PM=Parcel Map
- RS=Record of Survey
- FB=Field Book
- N=North
- DJ=Drain Inlet
- TOC=Top of Curb

Set=Conc. Nail with Brass Washer Stamped  
 "S.J. Co.", unless otherwise noted  
 Fd.=Found Conc. Nail with Brass Washer Stamped  
 "S.J. Co.", unless otherwise noted  
 Note: Found Monuments are not tagged  
 unless otherwise noted.

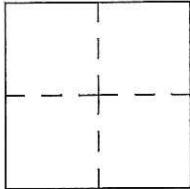
"No Attempt Was Made to Verify the Monument(s)"

# CORNER RECORD

Agency Index CR-17-319  
Document Number \_\_\_\_\_

City of \_\_\_\_\_ County of San Joaquin, California

Brief Legal Description Sowles Road 1980± South of Collier Road  
On east line of Section 10, Township 4 North, Range 7 East, Mount Diablo Base & Meridian



CORNER TYPE		COORDINATES (Optional)	
Government Corner	<input type="checkbox"/> Control	N. _____	E. _____
Meander	<input type="checkbox"/> Property	Elevation. _____	
Rancho	<input type="checkbox"/> Other	Units Metric <input type="checkbox"/> U.S. Survey Foot <input checked="" type="checkbox"/>	
Date of Survey	<u>September 08, 2017</u>	Horizontal Datum _____	
		Zone _____ Epoch Date _____	
		Vertical Datum _____	
		<input type="checkbox"/> Complies with Public Resources Code §§8801-8819	
		<input type="checkbox"/> Complies with Public Resources Code §§8890-8902	

PLS Act Ref.:	<input type="checkbox"/> 8765(d)	<input checked="" type="checkbox"/> 8771	<input type="checkbox"/> 8773	<input type="checkbox"/> Other:
Corner/ Monument:	<input checked="" type="checkbox"/> Left as found	<input type="checkbox"/> Established	<input type="checkbox"/> Rebuilt	<input checked="" type="checkbox"/> Pre-Construction
	<input type="checkbox"/> Found and tagged	<input type="checkbox"/> Reestablished	<input type="checkbox"/> Referenced	<input type="checkbox"/> Post-Construction

Narrative of corner identified and monument as found, set, reset, replaced, or removed:  
 See sheet #2 for description(s):

## SURVEYOR'S STATEMENT

This Corner Record was prepared by me or under my direction in conformance with the Professional Land Surveyor's Act on September 22, 2017.  
Signed James E. Hart P.L.S. or R.C.E. No. 8657



## COUNTY SURVEYOR'S STATEMENT

This Corner Record was received September 29, 2017  
and examined and filed October 10, 2017.  
Signed Warren D. Smith P.L.S. or R.C.E. No. 4842  
Title County Surveyor



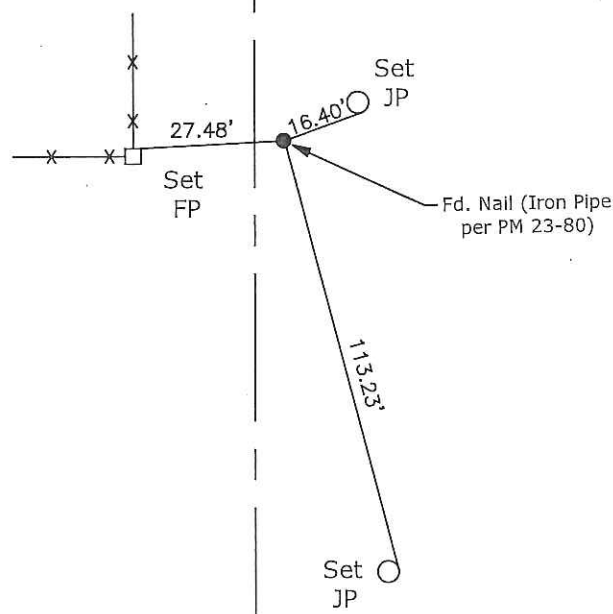
County Surveyor's Comment



N.T.S.

COLLIER ROAD

SOWLES ROAD  
1980'



UNDERWOOD ROAD

Construction

- CR=Corner Record
- FP=Fence Post
- JP=Joint Pole
- LP=Light Pole
- PP=Power Pole
- GP=Guy Pole
- SP=Service Pole
- TP=Telephone Pole
- S.F.N.=Searched Found Nothing
- N.T.S.=Not To Scale
- M&P=Maps & Plats
- PM=Parcel Map
- RS=Record of Survey
- FB=Field Book
- N=North
- DJ=Drain Inlet
- TOC=Top of Curb

Set=Conc. Nail with Brass Washer Stamped  
 "S.J. Co.", unless otherwise noted  
 Fd.=Found Conc. Nail with Brass Washer Stamped  
 "S.J. Co.", unless otherwise noted  
 Note: Found Monuments are not tagged  
 unless otherwise noted.

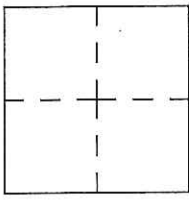
"No Attempt Was Made to Verify the Monument(s)"

# CORNER RECORD

Agency Index CR-17-320  
Document Number \_\_\_\_\_

City of \_\_\_\_\_ County of San Joaquin, California

Brief Legal Description Sowles Road 990± South of Collier Road  
On east line of Section 10, Township 4 North, Range 7 East, Mount Diablo Base & Meridian



### CORNER TYPE

- Government Corner  Control
- Meander  Property
- Rancho  Other

Date of Survey September 08, 2017

### COORDINATES (Optional)

N. \_\_\_\_\_ E. \_\_\_\_\_

Elevation. \_\_\_\_\_

Units Metric  U.S. Survey Foot

Horizontal Datum \_\_\_\_\_

Zone \_\_\_\_\_ Epoch Date \_\_\_\_\_

Vertical Datum \_\_\_\_\_

Complies with Public Resources Code §§8801-8819

Complies with Public Resources Code §§8890-8902

PLS Act Ref.:  8765(d)  8771  8773  Other:

Corner/ Monument:  Left as found  Established  Rebuilt  Pre-Construction

Found and tagged  Reestablished  Referenced  Post-Construction

Narrative of corner identified and monument as found, set, reset, replaced, or removed:

See sheet #2 for description(s):

### SURVEYOR'S STATEMENT

This Corner Record was prepared by me or under my direction in conformance with the Professional Land Surveyor's Act on September 22, 2017

Signed James E. Hart P.L.S. or R.C.E. No. 8657



### COUNTY SURVEYOR'S STATEMENT

This Corner Record was received September 29, 2017 and examined and filed October 10, 2017

Signed Warren D. Smith P.L.S. or R.C.E. No. 4842

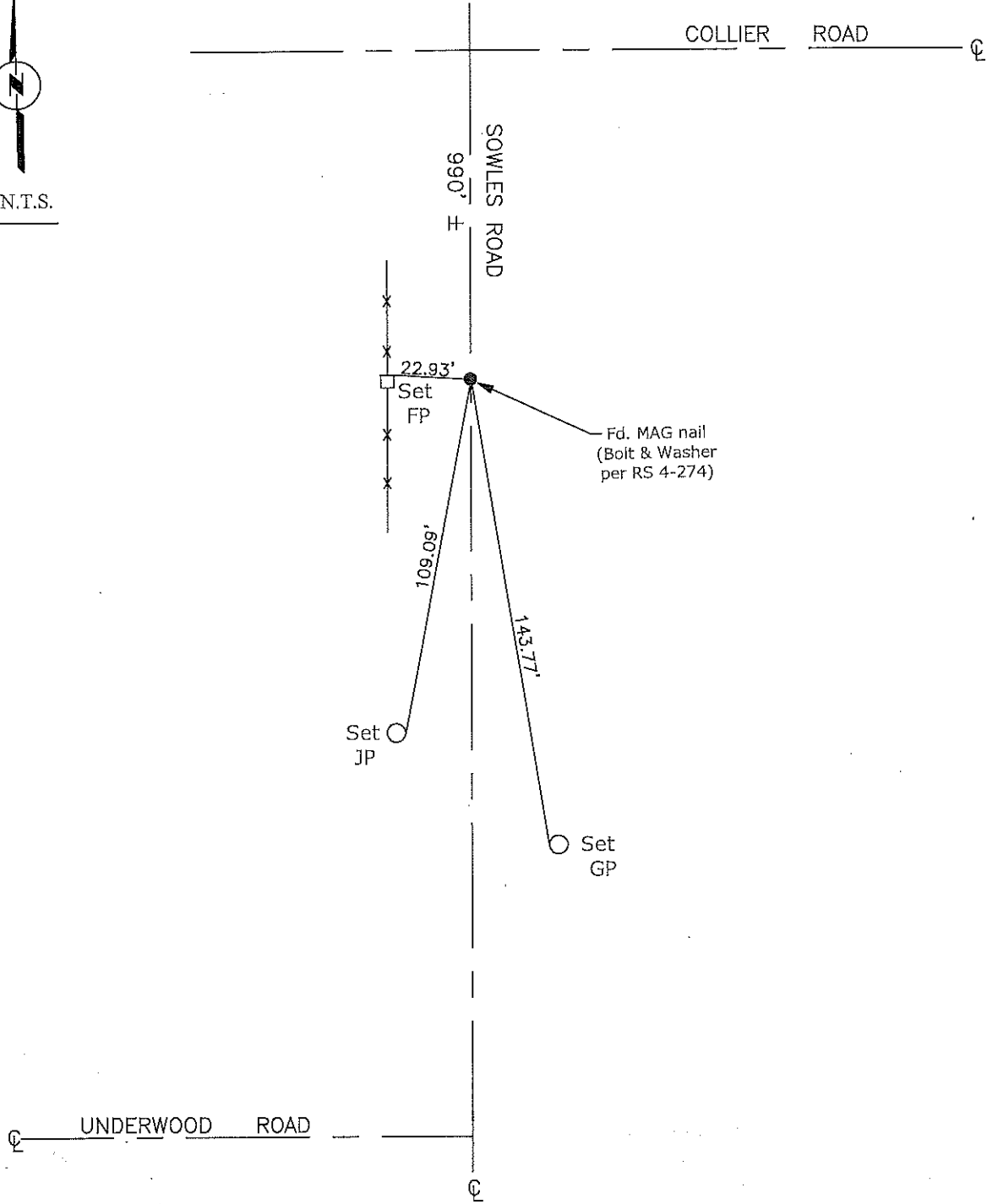
Title County Surveyor

County Surveyor's Comment





N.T.S.



- CR=Corner Record
- FP=Fence Post
- JP=Joint Pole
- LP=Light Pole
- PP=Power Pole
- GP=Guy Pole
- SP=Service Pole
- TP=Telephone Pole
- S.F.N.=Searched Found Nothing
- N.T.S.=Not To Scale
- M&P=Maps & Plats
- PM=Parcel Map
- RS=Record of Survey
- FB=Field Book
- N=North
- DI=Drain Inlet
- TOC=Top of Curb

Set=Conc. Nail with Brass Washer Stamped  
"S.J. Co.", unless otherwise noted

Fd.=Found Conc. Nail with Brass Washer Stamped  
"S.J. Co.", unless otherwise noted

Note: Found Monuments are not tagged  
unless otherwise noted.

"No Attempt Was Made to Verify the Monument(s)"



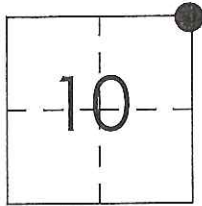
# CORNER RECORD

Agency Index CR-17-321

Document Number \_\_\_\_\_

City of \_\_\_\_\_ County of San Joaquin, California

Brief Legal Description Sowles Road @ Collier Road



T4N R7E  
MDB&M

### CORNER TYPE

Government Corner  Control  
 Meander  Property  
 Rancho  Other

Date of Survey September 08, 2017

### COORDINATES (Optional)

N. \_\_\_\_\_ E. \_\_\_\_\_

Elevation. \_\_\_\_\_

Units Metric  U.S. Survey Foot

Horizontal Datum \_\_\_\_\_

Zone \_\_\_\_\_ Epoch Date \_\_\_\_\_

Vertical Datum \_\_\_\_\_

Complies with Public Resources Code §§8801-8819

Complies with Public Resources Code §§8890-8902

PLS Act Ref.:  8765(d)  8771  8773  Other:

Corner/Monument:  Left as found  Established  Rebuilt  Pre-Construction

Found and tagged  Reestablished  Referenced  Post-Construction

Narrative of corner identified and monument as found, set, reset, replaced, or removed:

See sheet #2 for description(s):

### SURVEYOR'S STATEMENT

This Corner Record was prepared by me or under my direction in conformance with the Professional Land Surveyor's Act on September 22, 2017

Signed James E. Hart P.L.S. or R.C.E. No. 8657



### COUNTY SURVEYOR'S STATEMENT

This Corner Record was received September 29, 2017

and examined and filed October 10, 2017

Signed Warren D. Smith P.L.S. or R.C.E. No. 4842

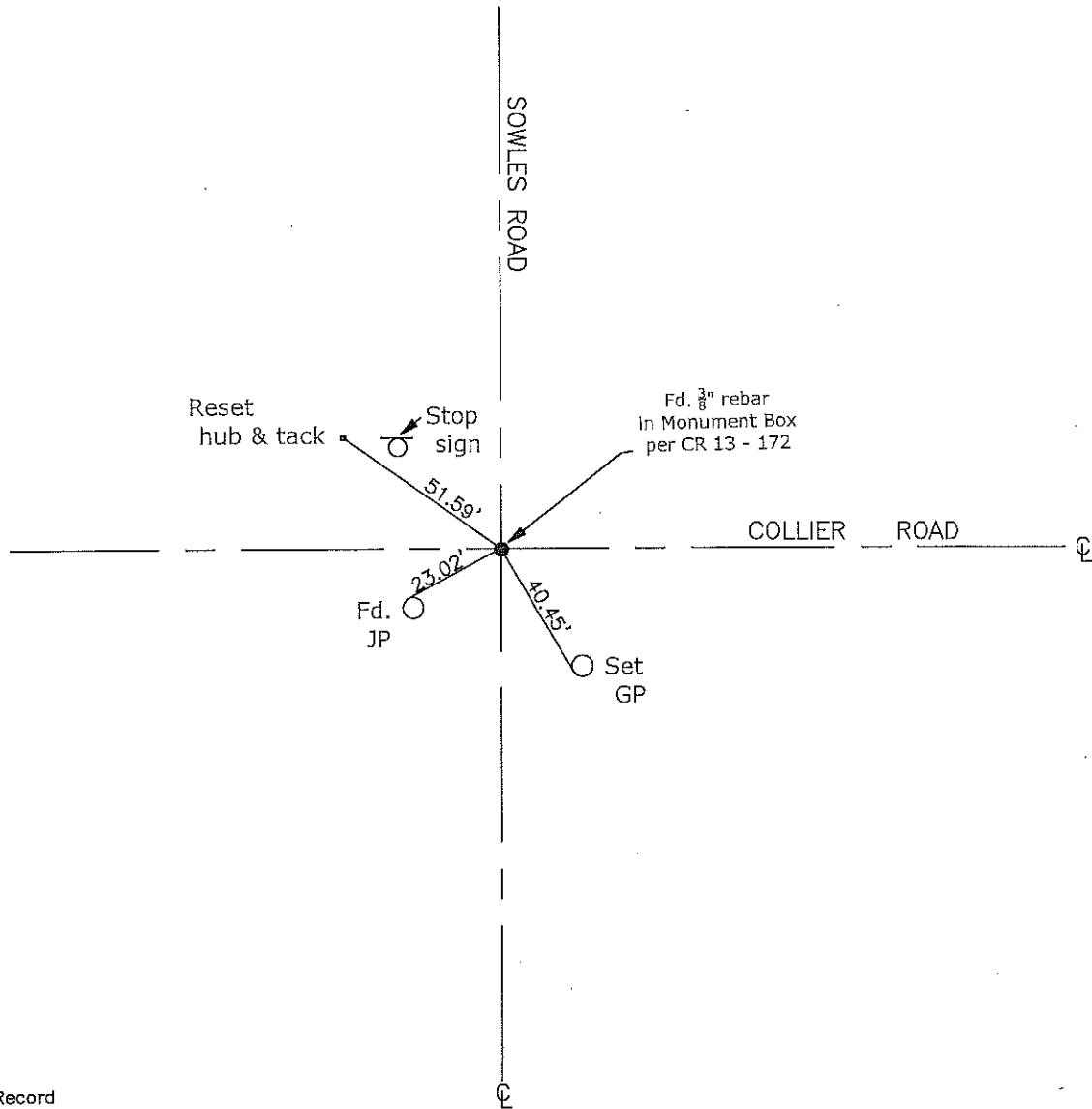
Title County Surveyor

County Surveyor's Comment





N.T.S.



CR=Corner Record  
 FP=Fence Post  
 JP=Joint Pole  
 LP=Light Pole  
 PP=Power Pole  
 GP=Guy Pole  
 SP=Service Pole  
 TP=Telephone Pole  
 S.F.N.=Searched Found Nothing  
 N.T.S.=Not To Scale  
 M&P=Maps & Plats  
 PM=Parcel Map  
 RS=Record of Survey  
 FB=Field Book  
 N=North  
 DI=Drain Inlet  
 TOC=Top of Curb

Set=Conc. Nail with Brass Washer Stamped  
 "S.J. Co.," unless otherwise noted  
 Fd.=Found Conc. Nail with Brass Washer Stamped  
 "S.J. Co.," unless otherwise noted  
 Note: Found Monuments are not tagged  
 unless otherwise noted.

"No Attempt Was Made to Verify the Monument(s)"