

CORNER RECORD

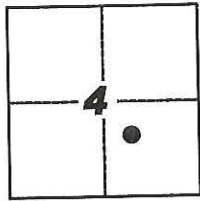
Agency Index: CR-17-311

Document Number: _____

City of STOCKTON

County of SAN JOAQUIN, California

Brief Legal Description FOUND MONUMENT AT THE INTERSECTION OF PACIFIC AVENUE AND YOKUTS AVENUE, AS SHOWN ON 33-S-20, S.J.C.R.



WEBER GRANT

CORNER TYPE

- Government Corner
- Control
- Meander
- Property
- Rancho
- Other

Date of Survey 7-18-2017

COORDINATES (Optional)

- N. _____ E. _____
- Elevation _____
- Units Metric U.S. Survey Foot
- Horizontal Datum _____
- Zone _____ Epoch Date _____
- Vertical Datum _____
- Complies with Public Resources Code §§8801-8819
- Complies with Public Resources Code §§8890-8902

PLS Act Ref: 8765(d) 8771 8773 Other:

Corner/Monument: Left as found Established Rebuilt Pre-Construction
 Found and Tagged Reestablished Referenced Post-Construction

Narrative of corner identified and monument as found, set, reset, replaced, or removed:

See sheet #2 for description(s):

FOUND MONUMENT; SET THREE (3) CONCRETE NAILS WITH BRASS TAG STAMPED "LS 6953" IN PAVEMENT AS WITNESS CORNERS, ALL AS SHOWN ON SHEET 2

SURVEYOR'S STATEMENT

This Corner Record was prepared by me or under my direction in conformance with the Land Surveyors' Act on JULY 28, 2017,



Signed [Signature] P.L.S. or R.C.E. Number 6953

COUNTY SURVEYOR'S STATEMENT

This Corner Record was received September 14, 2017

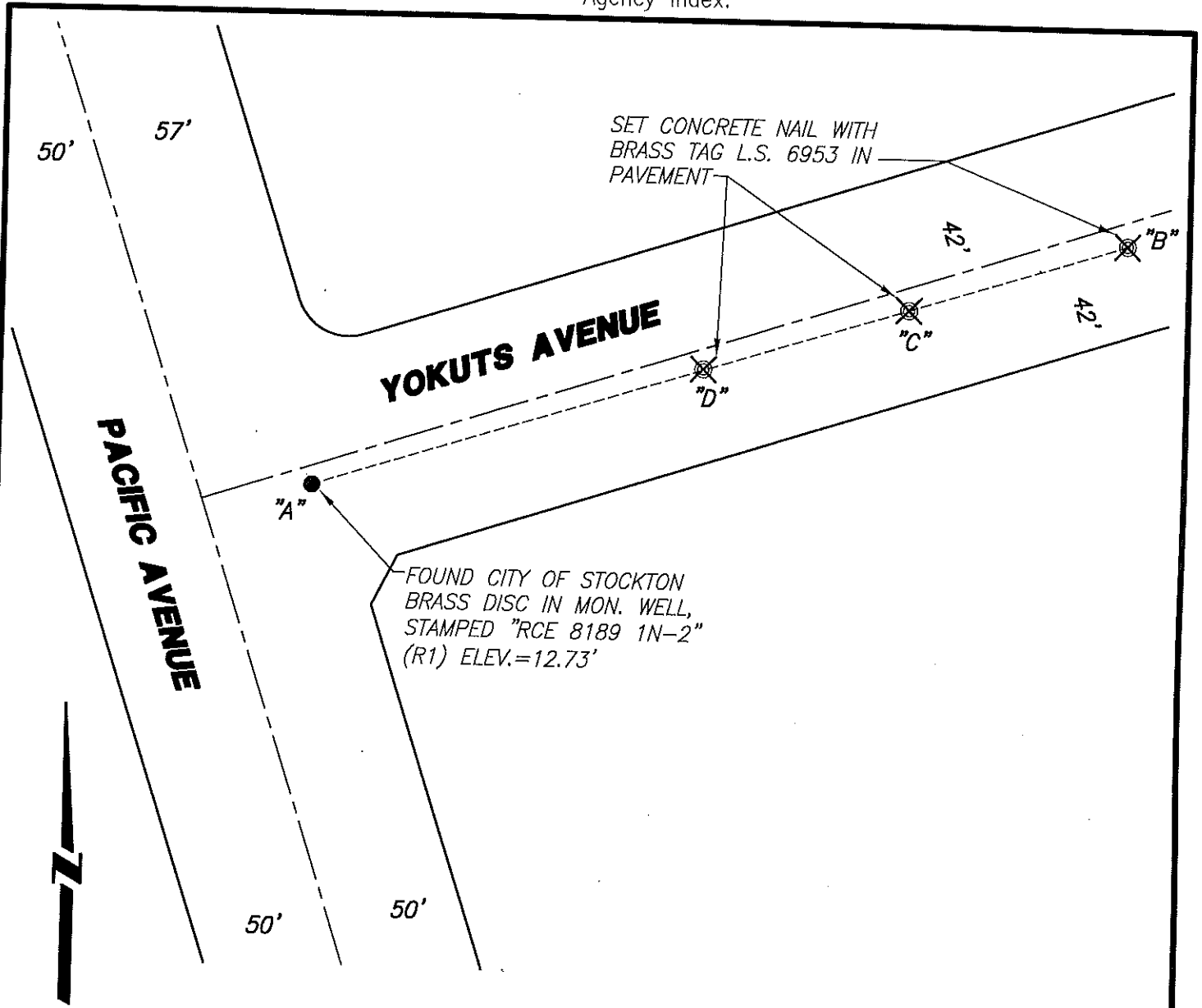
and examined and filed October 9, 2017

Signed [Signature] P.L.S. or R.C.E. No: 4842

Title County Surveyor



County Surveyor's Comment _____



NOT TO SCALE

REFERENCE:

(R1) 35-S-5 S.J.C.R.

X AND DISTANCE TABLE			
BS-@-FS	X	FS DISTANCE	ELEVATION
B-A-B	00°00'00"	214.99'(M)	15.19'
B-A-C	00°00'00"	149.18'(M)	14.96'
B-A-D	00°00'00"	80.40'(M)	14.21'

LEGEND:

- ⊗ SET MONUMENT AS NOTED.
- FOUND MONUMENT AS NOTED.

-S- RECORD OF SURVEY

S.J.C.R. SAN JOAQUIN COUNTY RECORDS

(M) MEASURED DISTANCE. ALL DISTANCES ARE MEASURED UNLESS NOTED OTHERWISE.

NOTE:

THIS CORNER RECORD DOES NOT VERIFY THIS MONUMENT TO BE IN THE CORRECT POSITION.