

CORNER RECORD

Agency Index: CR-17-309

Document Number: _____

City of STOCKTON

County of SAN JOAQUIN, California

Brief Legal Description FOUND MONUMENT AT THE INTERSECTION OF PACIFIC AVENUE AND SWAIN ROAD, AS SHOWN ON 33-S-20, S.J.C.R.



T.2N, R.6E

CORNER TYPE

- Government Corner Control
 Meander Property
 Rancho Other

Date of Survey 7-18-2017

COORDINATES (Optional)

N. _____ E. _____

Elevation _____

Units Metric U.S. Survey Foot

Horizontal Datum _____

Zone _____ Epoch Date _____

Vertical Datum _____

Complies with Public Resources Code §§8801-8819

Complies with Public Resources Code §§8890-8902

PLS Act Ref: 8765(d) 8771 8773 Other:

Corner/Monument: Left as found Established Rebuilt Pre-Construction
 Found and Tagged Reestablished Referenced Post-Construction

Narrative of corner identified and monument as found, set, reset, replaced, or removed:

See sheet #2 for description(s):

FOUND MONUMENT; SET THREE (3) CONCRETE NAILS WITH BRASS TAG STAMPED "LS 6953" IN PAVEMENT AS WITNESS CORNERS, ALL AS SHOWN ON SHEET 2

SURVEYOR'S STATEMENT

This Corner Record was prepared by me or under my direction in conformance with the Land Surveyors' Act on JULY 28, 2017,



Signed [Signature] P.L.S. or R.C.E. Number 6953

COUNTY SURVEYOR'S STATEMENT

This Corner Record was received September 14, 2017

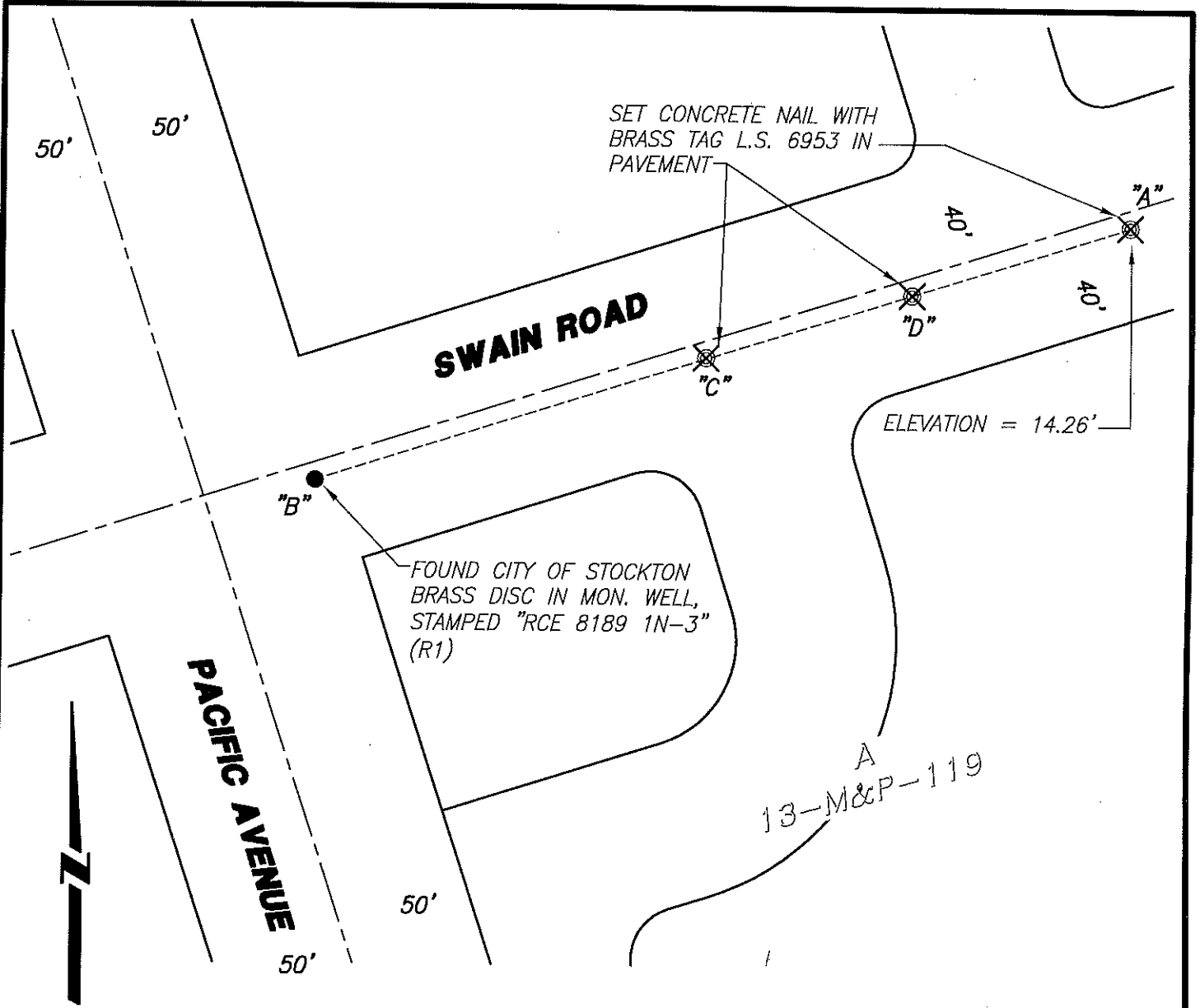
and examined and filed October 9, 2017

Signed [Signature] P.L.S. or R.C.E. No: 4842



Title County Surveyor

County Surveyor's Comment _____



NOT TO SCALE

REFERENCE:

(R1) 33-S-20 S.J.C.R.

LEGEND:

- ⊗ SET MONUMENT AS NOTED.
- FOUND MONUMENT AS NOTED.
- M&P- MAPS & PLATS
- S.J.C.R. SAN JOAQUIN COUNTY RECORDS
- (M) MEASURED DISTANCE. ALL DISTANCES ARE MEASURED UNLESS NOTED OTHERWISE.

NOTE:

THIS CORNER RECORD DOES NOT VERIFY THIS MONUMENT TO BE IN THE CORRECT POSITION.

BEARING AND DISTANCE TABLE			
BS-@-FS	Bearing	FS DISTANCE	ELEVATION
B-A-B	00°00'00"	235.68'(M)	12.92'
B-A-C	00°00'00"	159.64'(M)	14.29'
B-A-D	00°00'00"	84.05'(M)	14.25'