

CORNER RECORD

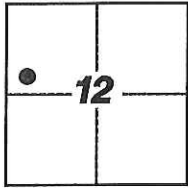
Agency Index: CR-17-307

Document Number: _____

City of LODI

County of SAN JOAQUIN, California

Brief Legal Description FOUND MONUMENT ALONG THE WEST RIGHT-OF-WAY LINE OF SOUTH LEE AVENUE;
NO REFERENCE.



T.3N, R.6E

CORNER TYPE

- Government Corner Control
 Meander Property
 Rancho Other

Date of Survey 7-12-2017

COORDINATES (Optional)

N. _____ E. _____

Elevation _____

Units Metric U.S. Survey Foot

Horizontal Datum _____

Zone _____ Epoch Date _____

Vertical Datum _____

Complies with Public Resources Code §§8801-8819

Complies with Public Resources Code §§8890-8902

PLS Act Ref: 8765(d) 8771 8773 Other:

Corner/ Left as found Established Rebuilt Pre-Construction

Monument: Found and Tagged Reestablished Referenced Post-Construction

Narrative of corner identified and monument as found, set, reset, replaced, or removed:

See sheet #2 for description(s):

FOUND MONUMENT, NO REFERENCE; SET THREE (3) CONCRETE NAILS WITH BRASS TAG STAMPED "LS 6953"
AS WITNESS CORNERS, ALL AS SHOWN ON SHEET 2

SURVEYOR'S STATEMENT

This Corner Record was prepared by me or under my direction in conformance with
the Land Surveyors' Act on JULY 21, 2017,

Signed [Signature] P.L.S. or R.C.E. Number 6953



COUNTY SURVEYOR'S STATEMENT

This Corner Record was received September 14, 2017

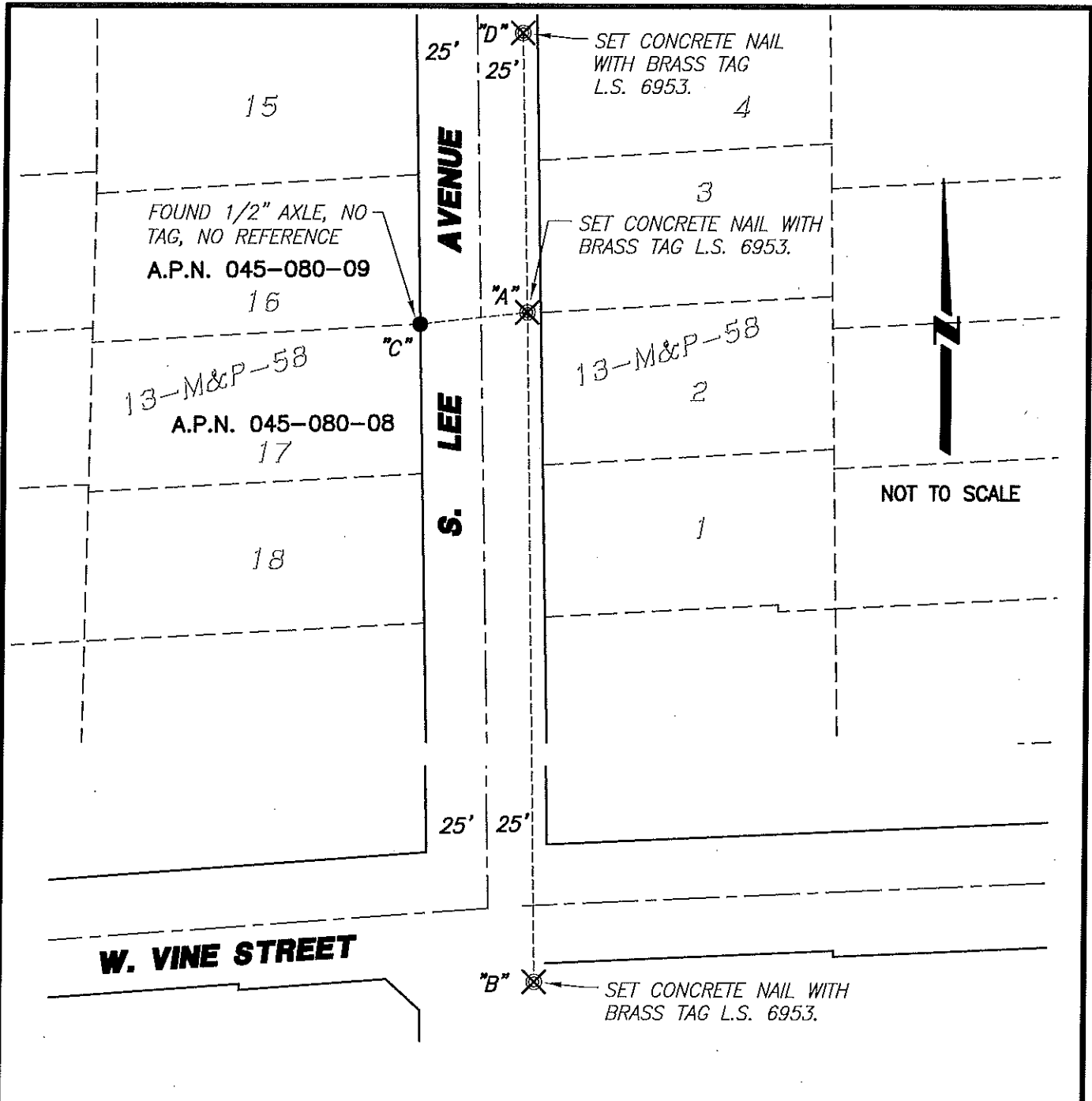
and examined and filed October 9, 2017

Signed [Signature] P.L.S. or R.C.E. No: 4842

Title County Surveyor



County Surveyor's Comment _____



LEGEND:

- ⊗ SET MONUMENT AS NOTED.
- FOUND MONUMENT AS NOTED.
- M&P- MAPS & PLATS
- S.J.C.R. SAN JOAQUIN COUNTY RECORDS
- (M) MEASURED DISTANCE. ALL DISTANCES ARE MEASURED UNLESS NOTED OTHERWISE.

X AND DISTANCE TABLE		
BS-@-FS	X	FS DISTANCE
B-A-B	00°00'00"	379.30'(M)
B-A-C	87°28'34"	34.20'(M)
B-A-D	180°00'00"	256.63'(M)

NOTE:
THIS CORNER RECORD DOES NOT VERIFY THIS MONUMENT TO BE IN THE CORRECT POSITION.