

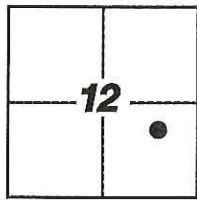
CORNER RECORD

Agency Index: CR-17-306

Document Number: _____

City of LODI County of SAN JOAQUIN, California

Brief Legal Description FOUND MONUMENT ALONG THE WEST RIGHT-OF-WAY LINE OF GARFIELD STREET; NO REFERENCE.



T.3N, R.6E

CORNER TYPE

- Government Corner Control
 Meander Property
 Rancho Other

Date of Survey 7-12-2017

COORDINATES (Optional)

N. _____ E. _____
 Elevation _____
 Units Metric U.S. Survey Foot
 Horizontal Datum _____
 Zone _____ Epoch Date _____
 Vertical Datum _____
 Complies with Public Resources Code §§801-8819
 Complies with Public Resources Code §§890-8902

PLS Act Ref: 8765(d) 8771 8773 Other:

Corner/ Left as found Established Rebuilt Pre-Construction
 Monument: Found and Tagged Reestablished Referenced Post-Construction

Narrative of corner identified and monument as found, set, reset, replaced, or removed:

See sheet #2 for description(s):

FOUND MONUMENT, NO REFERENCE; SET THREE (3) CONCRETE NAILS WITH BRASS TAG STAMPED
"LS 6953" AS WITNESS CORNERS, ALL AS SHOWN ON SHEET 2

SURVEYOR'S STATEMENT

This Corner Record was prepared by me or under my direction in conformance with
 the Land Surveyors' Act on JULY 21, 2017,



Signed [Signature] P.L.S. or R.C.E. Number 6953

COUNTY SURVEYOR'S STATEMENT

This Corner Record was received September 14, 2017

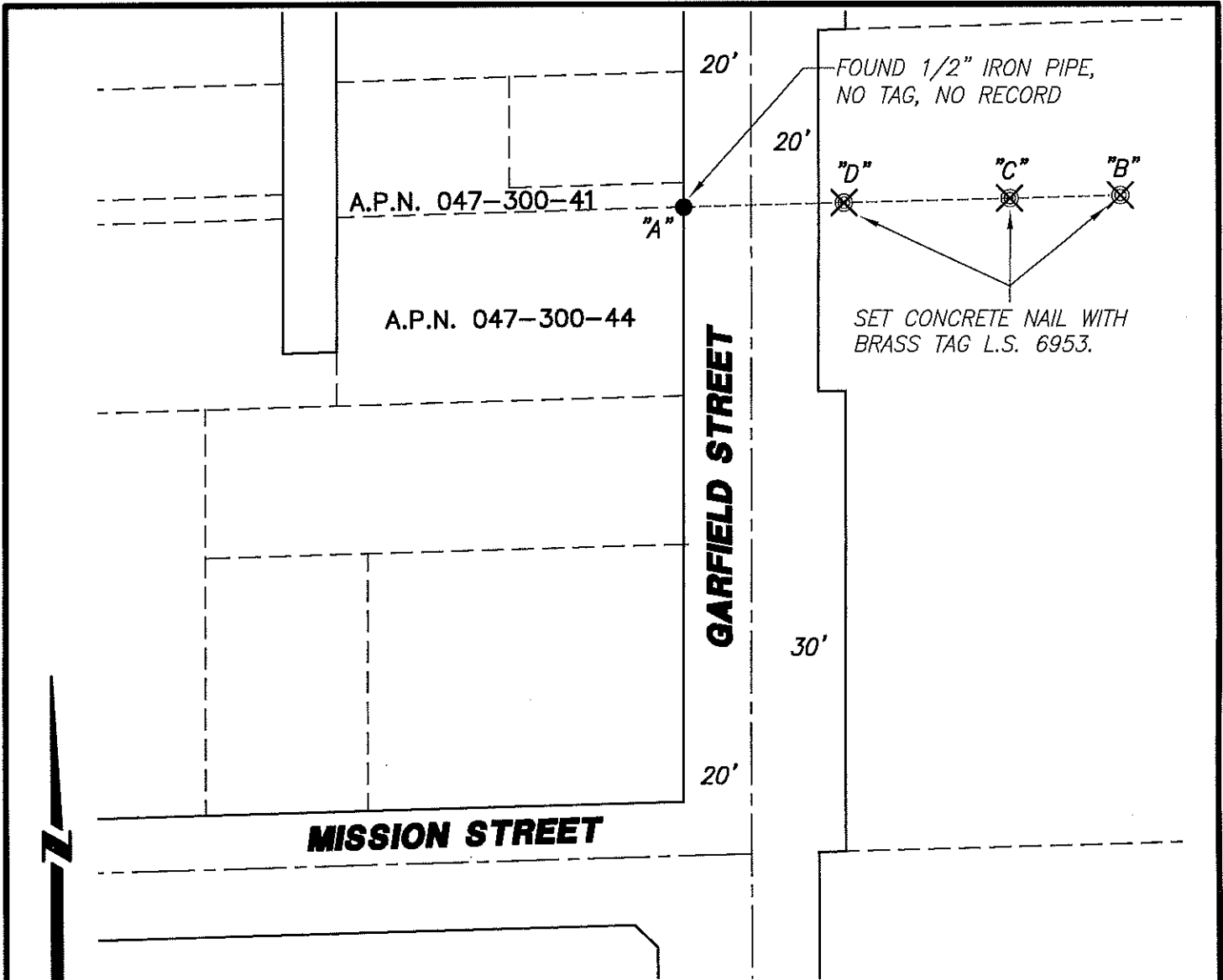
and examined and filed October 9, 2017

Signed [Signature] P.L.S. or R.C.E. No: 4842

Title County Surveyor



County Surveyor's Comment _____



FOUND 1/2" IRON PIPE,
NO TAG, NO RECORD

SET CONCRETE NAIL WITH
BRASS TAG L.S. 6953.



NOT TO SCALE

BS-@-FS	Χ	FS DISTANCE
B-A-B	00°00'00"	185.83'(M)
B-A-C	00°00'00"	131.12'(M)
B-A-D	00°00'00"	72.08'(M)

LEGEND:

- ⊗ SET MONUMENT AS NOTED.
- FOUND MONUMENT AS NOTED.
- S.J.C.R. SAN JOAQUIN COUNTY RECORDS
- (M) MEASURED DISTANCE. ALL DISTANCES ARE MEASURED UNLESS NOTED OTHERWISE.

NOTE:

THIS CORNER RECORD DOES NOT VERIFY THIS MONUMENT TO BE IN THE CORRECT POSITION.