

CORNER RECORD

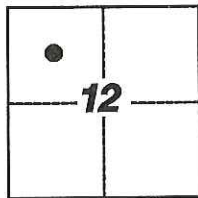
Agency Index: CR-17-305

Document Number: _____

City of LODI

County of SAN JOAQUIN, California

Brief Legal Description FOUND MONUMENT ALONG THE EAST RIGHT-OF-WAY LINE OF SOUTH SCHOOL; NO REFERENCE



T.3N, R.6E

CORNER TYPE

- Government Corner Control
 Meander Property
 Rancho Other

Date of Survey 7-12-2017

COORDINATES (Optional)

N. _____ E. _____

Elevation _____

Units Metric U.S. Survey Foot

Horizontal Datum _____

Zone _____ Epoch Date _____

Vertical Datum _____

Complies with Public Resources Code §§8801-8819

Complies with Public Resources Code §§8890-8902

PLS Act Ref: 8765(d) 8771 8773 Other:

Corner/Monument: Left as found Established Rebuilt Pre-Construction
 Found and Tagged Reestablished Referenced Post-Construction

Narrative of corner identified and monument as found, set, reset, replaced, or removed:

See sheet #2 for description(s):

FOUND MONUMENT, NO REFERENCE; SET THREE (3) CONCRETE NAILS WITH BRASS TAG STAMPED "LS 6953" AS WITNESS CORNERS, ALL AS SHOWN ON SHEET 2

SURVEYOR'S STATEMENT

This Corner Record was prepared by me or under my direction in conformance with the Land Surveyors' Act on JULY 21, 2017,

Signed [Signature] P.L.S. or R.C.E. Number 6953



COUNTY SURVEYOR'S STATEMENT

This Corner Record was received September 14, 2017

and examined and filed October 9, 2017

Signed [Signature] P.L.S. or R.C.E. No: 4842

Title County Surveyor



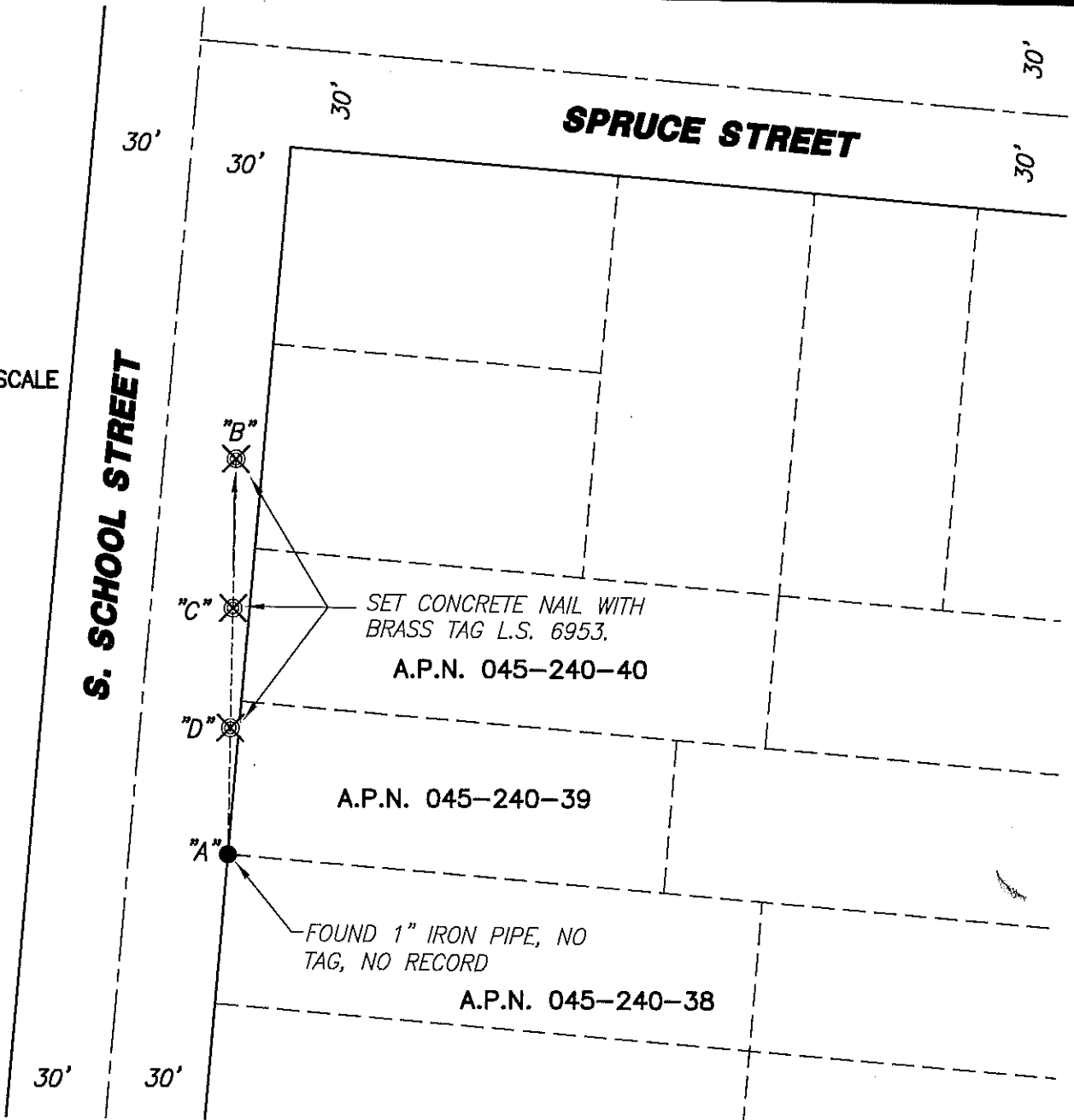
County Surveyor's Comment _____



NOT TO SCALE

S. SCHOOL STREET

SPRUCE STREET



A.P.N. 045-240-39

A.P.N. 045-240-38

BS-@-FS	χ	FS DISTANCE
B-A-B	00°00'00"	118.43'(M)
B-A-C	00°00'00"	71.56'(M)
B-A-D	00°00'00"	24.04'(M)

LEGEND:

- ⊗ SET MONUMENT AS NOTED.
- FOUND MONUMENT AS NOTED.
- S.J.C.R. SAN JOAQUIN COUNTY RECORDS
- (M) MEASURED DISTANCE. ALL DISTANCES ARE MEASURED UNLESS NOTED OTHERWISE.

NOTE:

THIS CORNER RECORD DOES NOT VERIFY THIS MONUMENT TO BE IN THE CORRECT POSITION.