

# CORNER RECORD

Agency Index: CR-17-300

Document Number: \_\_\_\_\_

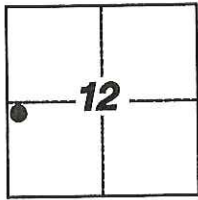
City of LODI

County of SAN JOAQUIN, California

Brief Legal Description FOUND MONUMENT ALONG THE EAST RIGHT-OF-WAY LINE OF HUTCHINS STREET, AS SHOWN IN VOLUME 13 OF MAPS & PLATS, PAGE 90, S.J.C.R.

### CORNER TYPE

### COORDINATES (Optional)



T.3N, R.6E

- Government Corner     Control  
 Meander                     Property  
 Rancho                         Other

Date of Survey 7-12-2017

N. \_\_\_\_\_ E. \_\_\_\_\_

Elevation \_\_\_\_\_

Units  Metric  U.S. Survey Foot

Horizontal Datum \_\_\_\_\_

Zone \_\_\_\_\_ Epoch Date \_\_\_\_\_

Vertical Datum \_\_\_\_\_

Complies with Public Resources Code §§8801-8819

Complies with Public Resources Code §§8890-8902

PLS Act Ref:  8765(d)     8771     8773     Other:

Corner/  
Monument:  Left as found     Established     Rebuilt     Pre-Construction  
 Found and Tagged     Reestablished     Referenced     Post-Construction

Narrative of corner identified and monument as found, set, reset, replaced, or removed:

See sheet #2 for description(s):

FOUND MONUMENT PER 13-M&P-90; SET THREE (3) CONCRETE NAILS WITH BRASS TAG STAMPED

"LS 6953" AS WITNESS CORNERS, ALL AS SHOWN ON SHEET 2

### SURVEYOR'S STATEMENT

This Corner Record was prepared by me or under my direction in conformance with the Land Surveyors' Act on JULY 21, 2017,



Signed [Signature] P.L.S. or R.C.E. Number 6953

### COUNTY SURVEYOR'S STATEMENT

This Corner Record was received September 14, 2017

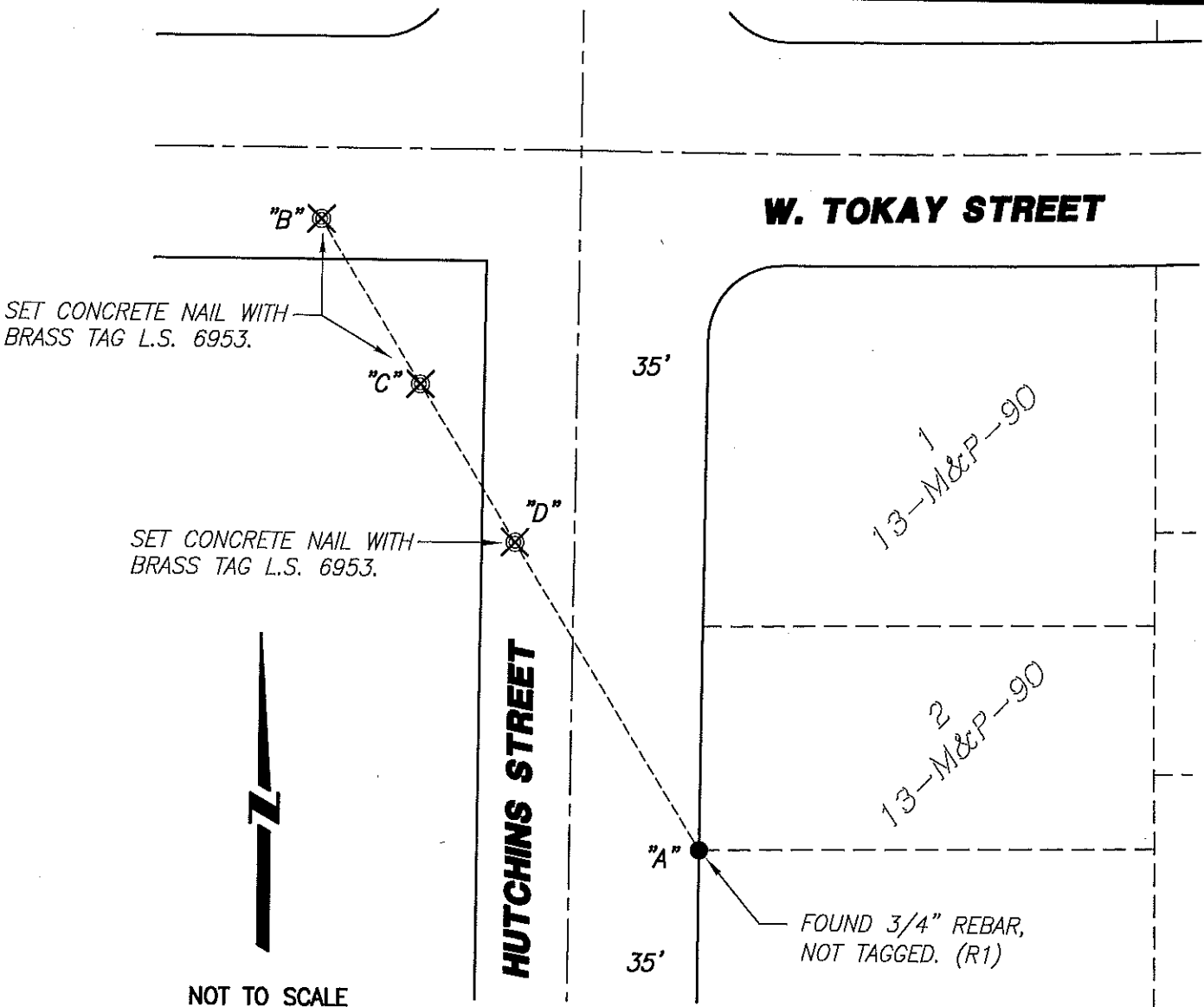
and examined and filed October 9, 2017

Signed [Signature] P.L.S. or R.C.E. No: 4842

Title County Surveyor



County Surveyor's Comment \_\_\_\_\_  
\_\_\_\_\_  
\_\_\_\_\_



**LEGEND:**

- ✕ SET MONUMENT AS NOTED.
- FOUND MONUMENT AS NOTED.
- M&P- MAPS & PLATS
- S.J.C.R. SAN JOAQUIN COUNTY RECORDS
- (M) MEASURED DISTANCE. ALL DISTANCES ARE MEASURED UNLESS NOTED OTHERWISE.

BS-@-FS	✕	FS DISTANCE
B-A-B	00°00'00"	246.40'(M)
B-A-C	00°00'00"	169.17'(M)
B-A-D	00°00'00"	91.17'(M)

**REFERENCE:**

(R1) 13-M&P-90 S.J.C.R.

**NOTE:**

THIS CORNER RECORD DOES NOT VERIFY THIS MONUMENT TO BE IN THE CORRECT POSITION.