

CORNER RECORD

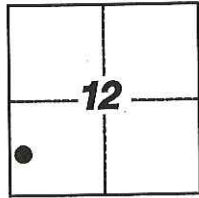
Agency Index: CR-17-299

Document Number: _____

City of LODI

County of SAN JOAQUIN, California

Brief Legal Description FOUND MONUMENT ALONG THE EAST RIGHT-OF-WAY LINE OF HUTCHINS STREET, AS SHOWN IN VOLUME 30 OF MAPS & PLATS, PAGE 45, S.J.C.R.



T.3N, R.6E

CORNER TYPE

- Government Corner Control
 Meander Property
 Rancho Other

Date of Survey 7-12-2017

COORDINATES (Optional)

N. _____ E. _____

Elevation _____

Units Metric U.S. Survey Foot

Horizontal Datum _____

Zone _____ Epoch Date _____

Vertical Datum _____

Complies with Public Resources Code §§8801-8819

Complies with Public Resources Code §§8890-8902

PLS Act Ref: 8765(d) 8771 8773 Other:

Corner/
Monument: Left as found Established Rebuilt Pre-Construction
 Found and Tagged Reestablished Referenced Post-Construction

Narrative of corner identified and monument as found, set, reset, replaced, or removed:

See sheet #2 for description(s):

FOUND MONUMENT PER 30-M&P-45; SET THREE (3) CONCRETE NAILS WITH BRASS TAG STAMPED

"LS 6953" AS WITNESS CORNERS, ALL AS SHOWN ON SHEET 2

SURVEYOR'S STATEMENT

This Corner Record was prepared by me or under my direction in conformance with the Land Surveyors' Act on JULY 21, 2017,



Signed [Signature] P.L.S. or R.C.E. Number 6953

COUNTY SURVEYOR'S STATEMENT

This Corner Record was received September 14, 2017

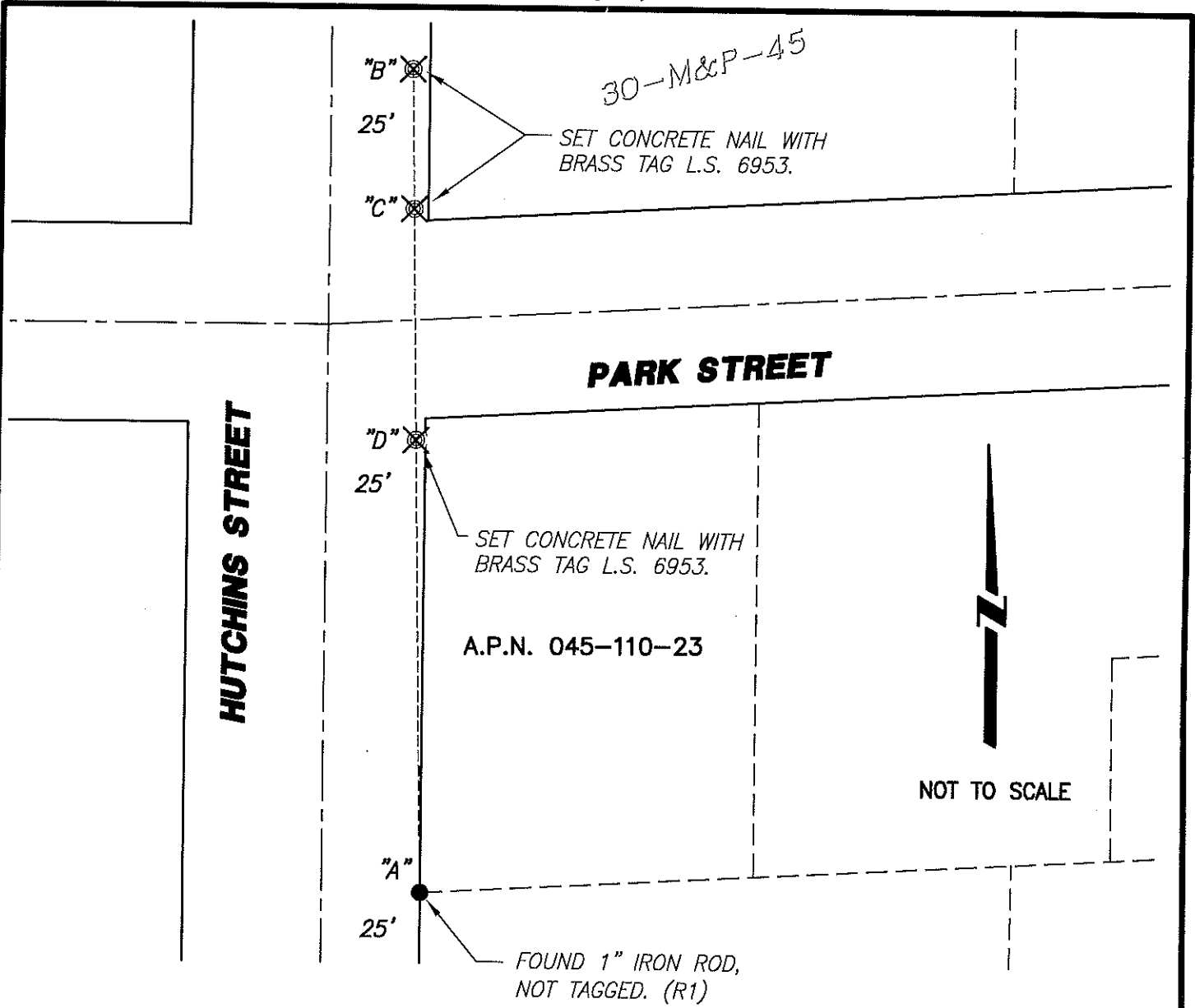
and examined and filed October 9, 2017

Signed Warren D. Smith P.L.S. or R.C.E. No: 4842

Title County Surveyor



County Surveyor's Comment _____



30-M&P-45

SET CONCRETE NAIL WITH BRASS TAG L.S. 6953.

PARK STREET

HUTCHINS STREET

A.P.N. 045-110-23

NOT TO SCALE

FOUND 1" IRON ROD, NOT TAGGED. (R1)

X AND DISTANCE TABLE		
BS-@-FS	X	FS DISTANCE
B-A-B	00'00'00"	246.40'(M)
B-A-C	00'00'00"	169.17'(M)
B-A-D	00'00'00"	91.17'(M)

LEGEND:

- ⊗ SET MONUMENT AS NOTED.
- FOUND MONUMENT AS NOTED.
- M&P- MAPS & PLATS
- S.J.C.R. SAN JOAQUIN COUNTY RECORDS
- (M) MEASURED DISTANCE. ALL DISTANCES ARE MEASURED UNLESS NOTED OTHERWISE.

REFERENCE:

(R1) 30-M&P-45 S.J.C.R.

NOTE:

THIS CORNER RECORD DOES NOT VERIFY THIS MONUMENT TO BE IN THE CORRECT POSITION.