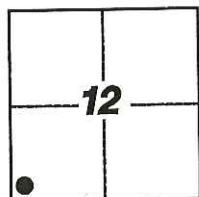


CORNER RECORD

Agency Index: CR-17-298

Document Number: _____

City of LODICounty of SAN JOAQUIN, CaliforniaBrief Legal Description FOUND MONUMENT ALONG THE EAST RIGHT-OF-WAY LINE OF HUTCHINS STREET, AS SHOWN IN VOLUME 6 OF SURVEYS, PAGE 135, S.J.C.R.

T.3N, R.6E

CORNER TYPE

- Government Corner Control
 Meander Property
 Rancho Other

Date of Survey 7-12-2017**COORDINATES (Optional)**

N. _____ E. _____

Elevation _____

Units Metric U.S. Survey Foot

Horizontal Datum _____

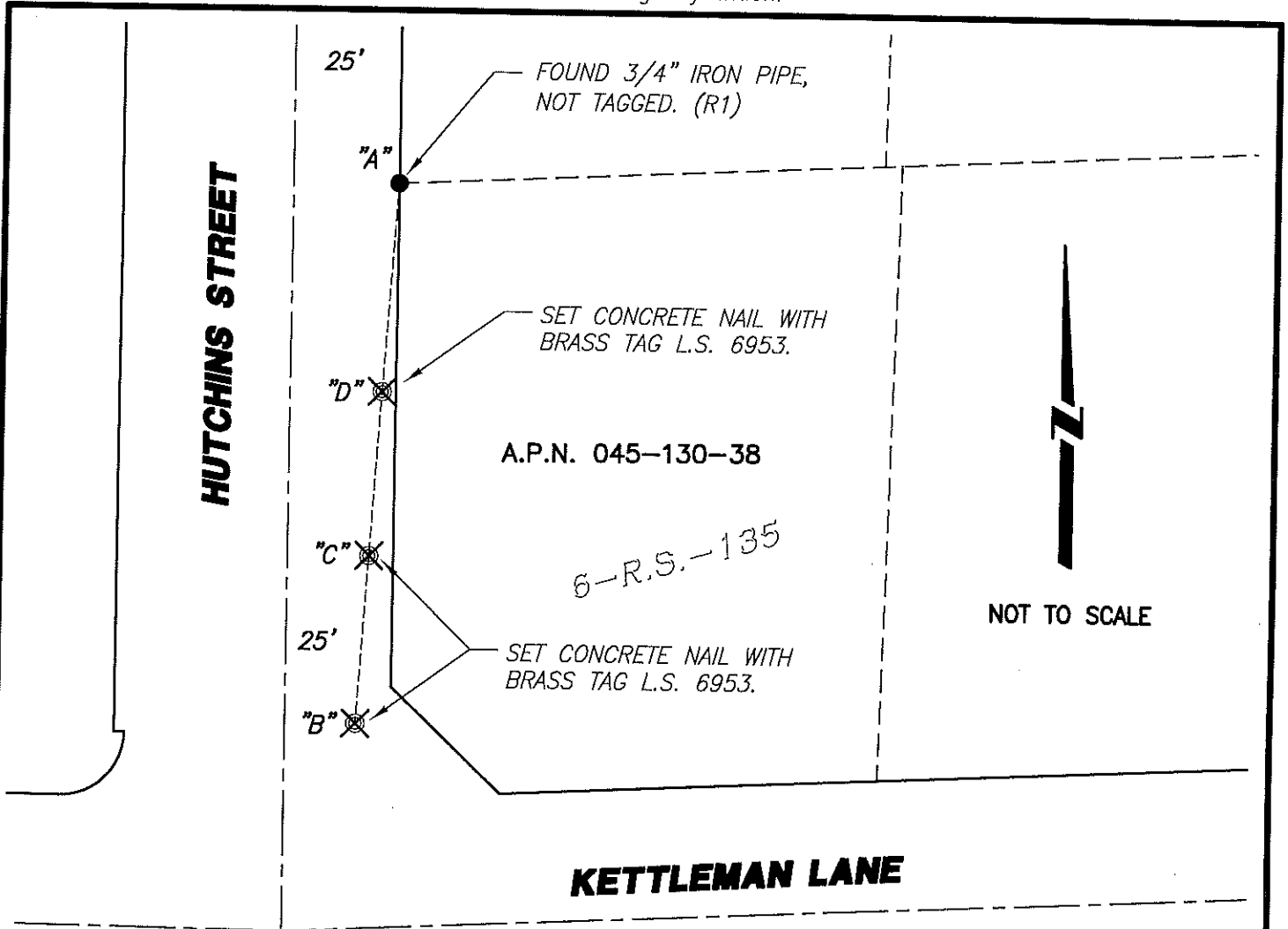
Zone _____ Epoch Date _____

Vertical Datum _____

 Complies with Public Resources Code §§8801-8819 Complies with Public Resources Code §§8890-8902PLS Act Ref: 8765(d) 8771 8773 Other:
 Corner/Monument: Left as found Established Rebuilt Pre-Construction
 Found and Tagged Reestablished Referenced Post-Construction

Narrative of corner identified and monument as found, set, reset, replaced, or removed:

 See sheet #2 for description(s):
FOUND MONUMENT PER 6-R.S.-135; SET THREE (3) CONCRETE NAILS WITH BRASS TAG STAMPED
"LS 6953" AS WITNESS CORNERS, ALL AS SHOWN ON SHEET 2
SURVEYOR'S STATEMENT
 This Corner Record was prepared by me or under my direction in conformance with
 the Land Surveyors' Act on JULY 21, 2017,
Signed [Signature] P.L.S. or R.C.E. Number 6953**COUNTY SURVEYOR'S STATEMENT**This Corner Record was received September 14, 2017and examined and filed October 9, 2017Signed Warren D. Smith P.L.S. or R.C.E. No: 4842Title County Surveyor
 County Surveyor's Comment _____



NOT TO SCALE

LEGEND:

- ⊗ SET MONUMENT AS NOTED.
- FOUND MONUMENT AS NOTED.
- R.S.- RECORD OF SURVEY
- S.J.C.R. SAN JOAQUIN COUNTY RECORDS
- (M) MEASURED DISTANCE. ALL DISTANCES ARE MEASURED UNLESS NOTED OTHERWISE.

BS-@-FS	∠	FS DISTANCE
B-A-B	00°00'00"	127.53'(M)
B-A-C	00°00'00"	88.23'(M)
B-A-D	00°00'00"	49.24'(M)

REFERENCE:

(R1) 6-R.S.-135 S.J.C.R.

NOTE:

THIS CORNER RECORD DOES NOT VERIFY THIS MONUMENT TO BE IN THE CORRECT POSITION.