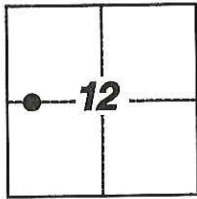


CORNER RECORD

Agency Index: CR-17-297

Document Number: _____

City of LODICounty of SAN JOAQUIN, CaliforniaBrief Legal Description FOUND MONUMENTS ALONG THE EAST & WEST RIGHT-OF-WAY LINE OF SOUTH PLEASANT AVENUE PER 13-M&P-43 & 5-R.S.-10.

T.3N, R.6E

CORNER TYPE

- Government Corner Control
 Meander Property
 Rancho Other

Date of Survey 7-12-2017

COORDINATES (Optional)

N. _____ E. _____
 Elevation _____
 Units Metric U.S. Survey Foot
 Horizontal Datum _____
 Zone _____ Epoch Date _____
 Vertical Datum _____
 Complies with Public Resources Code §§8801-8819
 Complies with Public Resources Code §§8890-8902

PLS Act Ref: 8765(d) 8771 8773 Other:

Corner/
 Monument: Left as found Established Rebuilt Pre-Construction
 Found and Tagged Reestablished Referenced Post-Construction

Narrative of corner identified and monument as found, set, reset, replaced, or removed:

 See sheet #2 for description(s):

FOUND MONUMENTS PER REFERENCE (R1) & (R2); SET FOUR (4) CONCRETE NAILS WITH BRASS TAG STAMPED "LS 6953" AS WITNESS CORNERS, ALL AS SHOWN ON SHEET 2

SURVEYOR'S STATEMENT

This Corner Record was prepared by me or under my direction in conformance with the Land Surveyors' Act on JULY 21, 2017,

Signed _____ P.L.S. or ~~R.C.E.~~ Number 6953

COUNTY SURVEYOR'S STATEMENT

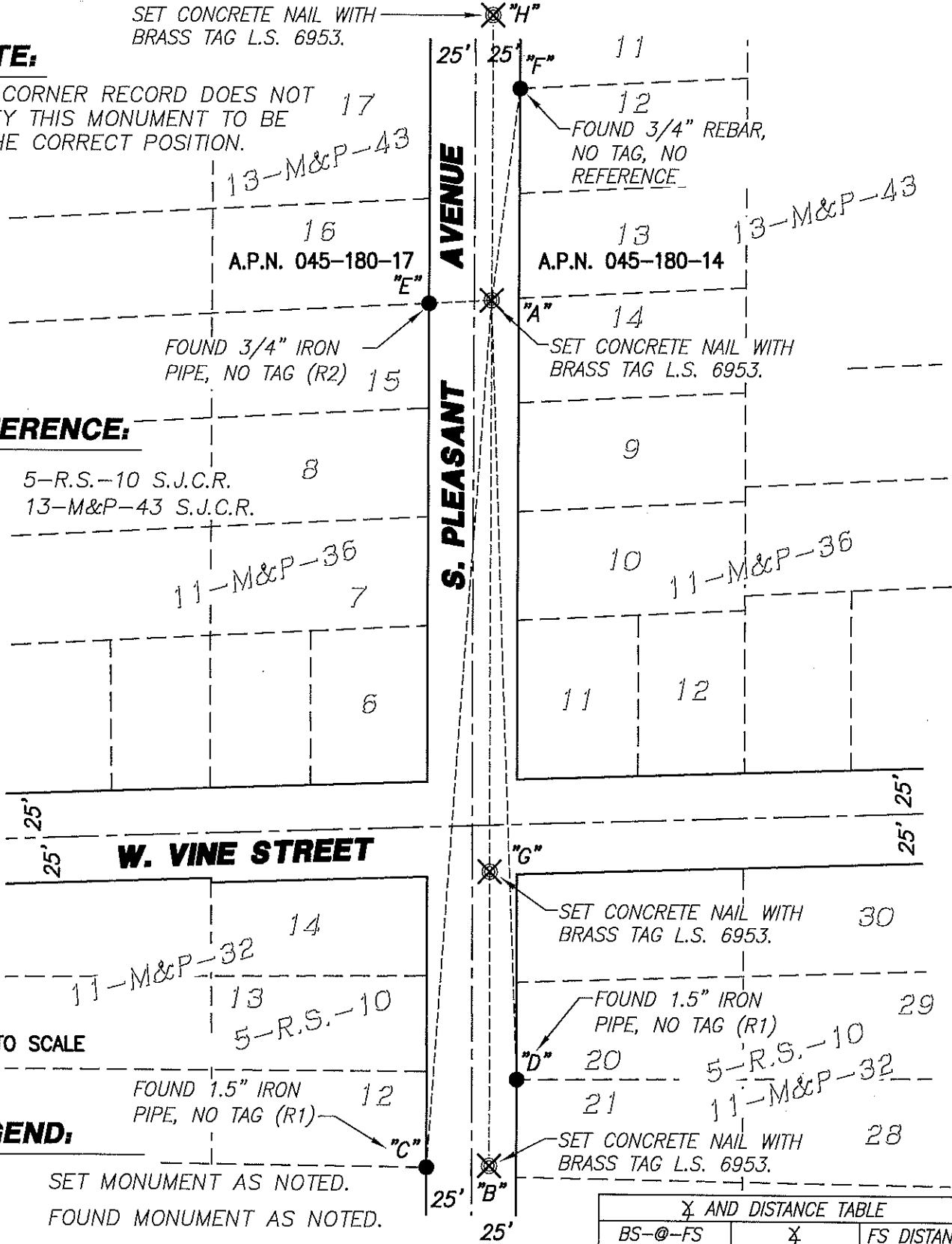
This Corner Record was received September 14, 2017and examined and filed October 9, 2017Signed Warren D. Smith P.L.S. or ~~R.C.E.~~ No: 4842Title County Surveyor

County Surveyor's Comment _____

SET CONCRETE NAIL WITH
BRASS TAG L.S. 6953.

NOTE:

THIS CORNER RECORD DOES NOT
VERIFY THIS MONUMENT TO BE
IN THE CORRECT POSITION.



REFERENCE:

- (R1) 5-R.S.-10 S.J.C.R. 8
- (R2) 13-M&P-43 S.J.C.R.

NOT TO SCALE

LEGEND:

- ⊗ SET MONUMENT AS NOTED.
- FOUND MONUMENT AS NOTED.
- M&P MAPS & PLATS
- R.S. RECORD OF SURVEY
- S.J.C.R. SAN JOAQUIN COUNTY RECORDS
- (M) MEASURED DISTANCE. ALL DISTANCES ARE MEASURED UNLESS NOTED OTHERWISE.

X AND DISTANCE TABLE		
BS-@-FS	X	FS DISTANCE
B-A-B	00°00'00"	484.26'(M)
B-A-C	4°02'29"	479.72'(M)
B-A-D	357°49'49"	428.39'(M)
B-A-E	90°16'09"	33.23'(M)
B-A-F	188°08'23"	119.00'(M)
B-A-G	00°00'00"	316.88'(M)
B-A-H	180°00'00"	229.88'(M)