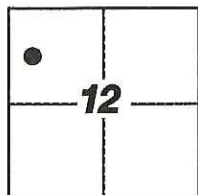


# CORNER RECORD

Agency Index: CR-17-296

Document Number: \_\_\_\_\_

City of LODICounty of SAN JOAQUIN, CaliforniaBrief Legal Description FOUND MONUMENTS ALONG EAST RIGHT-OF-WAY LINE OF SOUTH PLEASANT AVENUE, AS SHOWN ON 11-M&P-146, S.J.C.R.

T.3N, R.6E

### CORNER TYPE

- Government Corner     Control  
 Meander                     Property  
 Rancho                          Other

Date of Survey 7-12-2017

### COORDINATES (Optional)

N. \_\_\_\_\_ E. \_\_\_\_\_

Elevation \_\_\_\_\_

Units  Metric  U.S. Survey Foot

Horizontal Datum \_\_\_\_\_

Zone \_\_\_\_\_ Epoch Date \_\_\_\_\_

Vertical Datum \_\_\_\_\_

 Complies with Public Resources Code §§8801-8819 Complies with Public Resources Code §§8890-8902PLS Act Ref:  8765(d)     8771     8773     Other:

Corner/  
 Monument:     Left as found     Established     Rebuilt     Pre-Construction  
                    Found and Tagged     Reestablished     Referenced     Post-Construction

Narrative of corner identified and monument as found, set, reset, replaced, or removed:

 See sheet #2 for description(s):

FOUND MONUMENTS PER 11-M&P-146; SET FOUR (4) CONCRETE NAILS WITH BRASS TAG STAMPED  
"LS 6953" AS WITNESS CORNERS, ALL AS SHOWN ON SHEET 2

### SURVEYOR'S STATEMENT

This Corner Record was prepared by me or under my direction in conformance with  
 the Land Surveyors' Act on JULY 21, 2017,

Signed [Signature] P.L.S. or R.C.E. Number 6953

### COUNTY SURVEYOR'S STATEMENT

This Corner Record was received September 14, 2017and examined and filed October 9, 2017Signed [Signature] P.L.S. or R.C.E. No: 4842Title County Surveyor

County Surveyor's Comment \_\_\_\_\_

**W. TOKAY STREET**



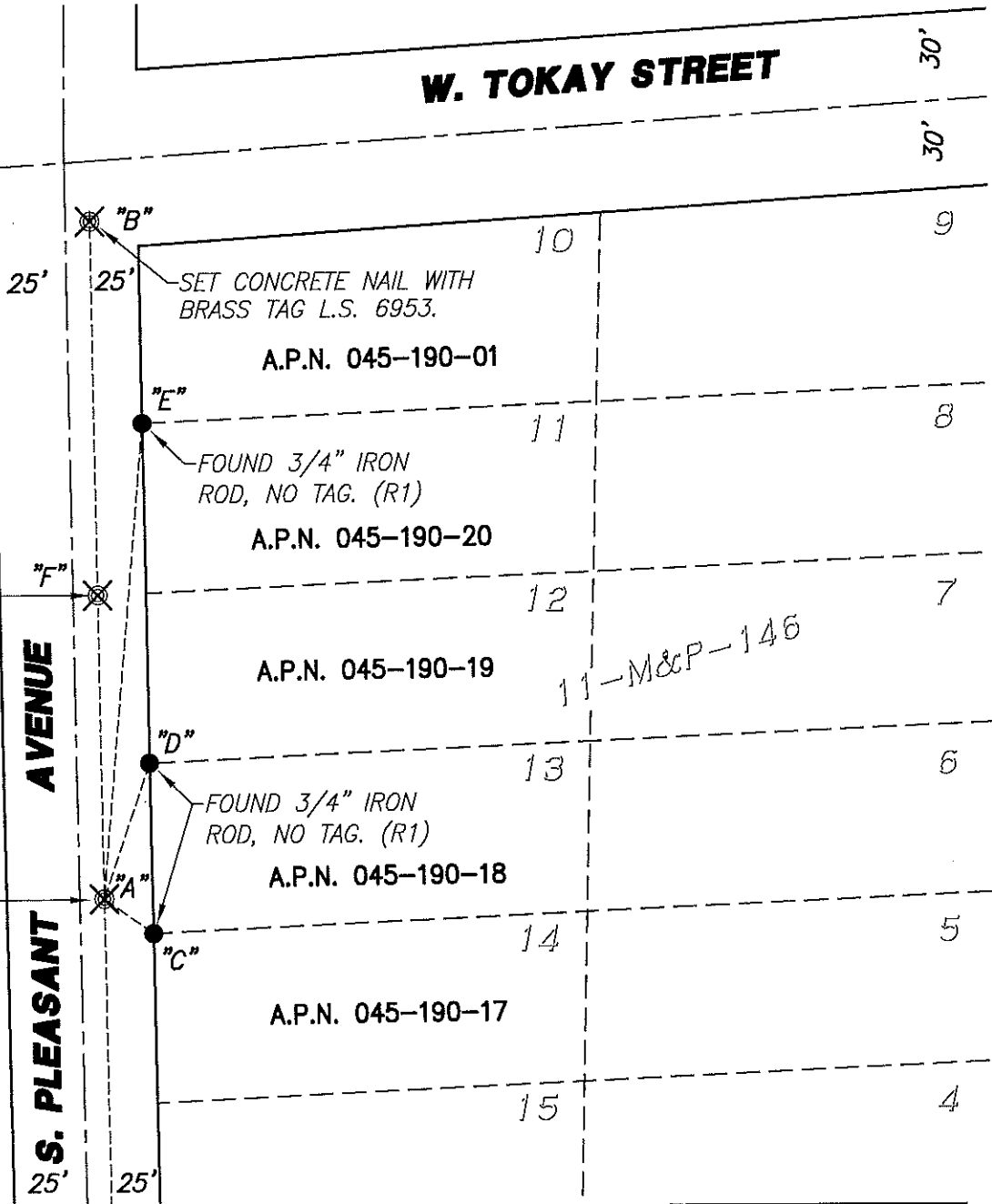
NOT TO SCALE

SET CONCRETE NAIL WITH BRASS TAG L.S. 6953.

SET CONCRETE NAIL WITH BRASS TAG L.S. 6953.

SET CONCRETE NAIL WITH BRASS TAG L.S. 6953.

**S. PLEASANT AVENUE**



∠ AND DISTANCE TABLE

BS-@-FS	∠	FS DISTANCE
B-A-B	00°00'00"	231.36'(M)
B-A-C	126°05'49"	20.51'(M)
B-A-D	20°06'22"	48.84'(M)
B-A-E	6°02'03"	163.20'(M)
B-A-F	0°00'00"	102.82'(M)
B-A-G	180°00'00"	244.94'(M)

**LEGEND:**

- ⊗ SET MONUMENT AS NOTED.
- FOUND MONUMENT AS NOTED.
- M&P- MAPS & PLATS
- S.J.C.R. SAN JOAQUIN COUNTY RECORDS
- (M) MEASURED DISTANCE. ALL DISTANCES ARE MEASURED UNLESS NOTED OTHERWISE.

**REFERENCE:**

(R1) 11-M&P-146 S.J.C.R.

**NOTE:**

THIS CORNER RECORD DOES NOT VERIFY THIS MONUMENT TO BE IN THE CORRECT POSITION.