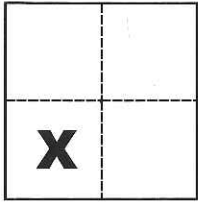


CORNER RECORD

Agency Index CR-17-294

Document Number _____

City of _____ County of Alameda, San Joaquin, Stanislaus, Santa Clara, CaliforniaBrief Legal Description The Oak Tree Marking the 4 County Corner**CORNER TYPE**

Government Corner Control
 Meander Property
 Rancho Other

COORDINATES (Optional)

N. _____ E. _____
 Elevation _____
 Units Metric U.S. Survey Foot
 Horizontal Datum _____
 Zone _____ Epoch Date _____
 Vertical Datum _____

Sec. 19, T.5S., R.5E.,
M.D.B. & M.

Complies with Public Resources Code §§8801-8819
 Complies with Public Resources Code §§8890-8902

PLS Act Ref.: 8765(d) 8771 8773 Other:
 Corner/Monument: Left as found Established Rebuilt Pre-Construction
 Found and tagged Reestablished Referenced Post-Construction

Narrative of corner identified and monument as found, set, reset, replaced, or removed:

 See sheet #2 for description(s):

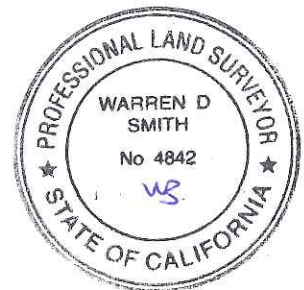
- iGage model X-90-OPUS L1L2 GPS; OPUS Solution [Ephemeris Used: igs19235.eph (precise)]
- iGage model X-90-OPUS L1L2 GPS; OPUS Solution [Ephemeris Used: igs19235.eph (precise)]

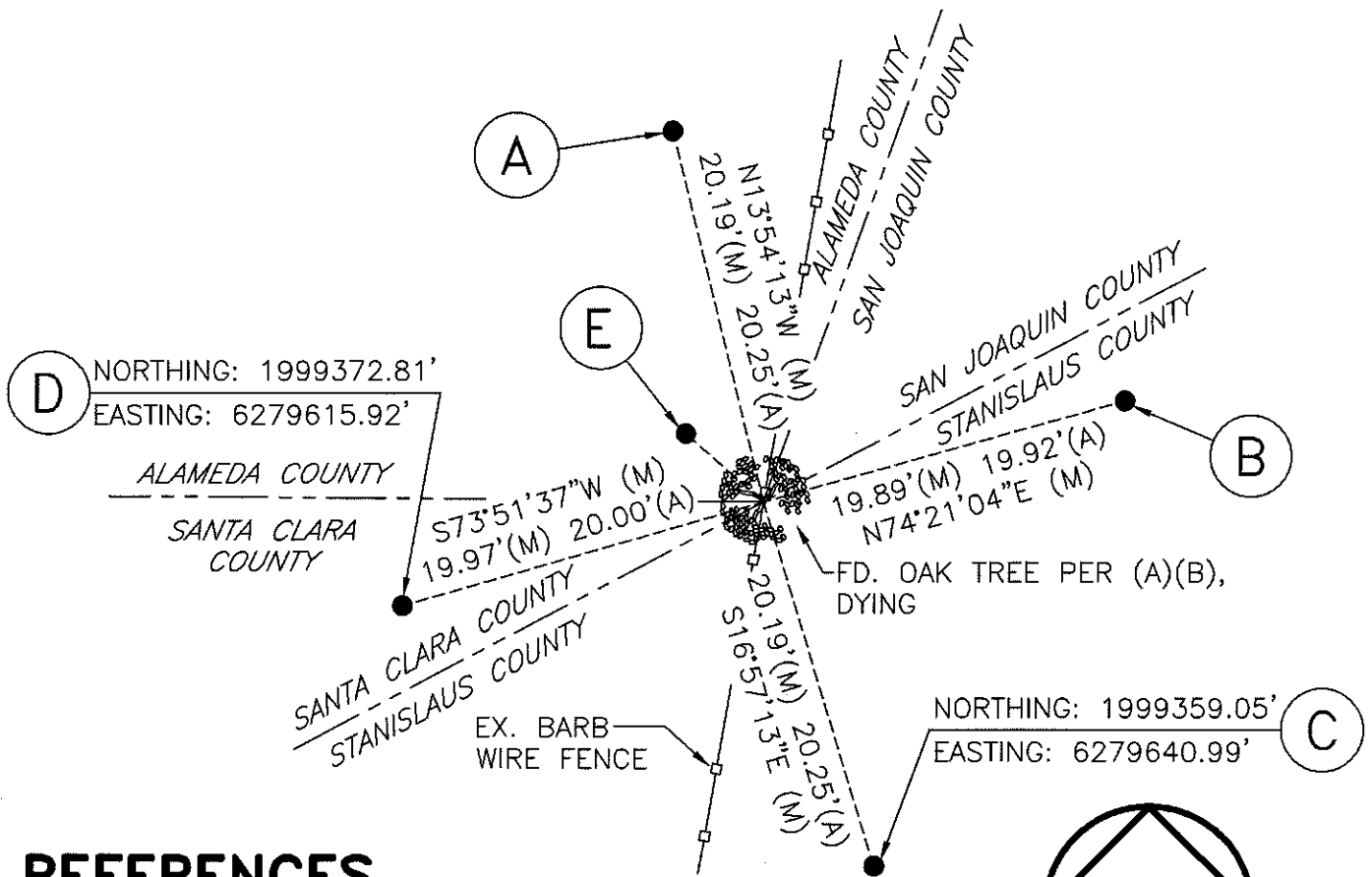
SURVEYOR'S STATEMENT

This Corner Record was prepared by me or under my direction in conformance with

the Professional Land Surveyors' Act on Oct. 2, 2017Signed Michael L. Quarantoli P.L.S. or R.C.E. No. L.S. 4450**COUNTY SURVEYOR'S STATEMENT**This Corner Record was received October 2, 2017and examined and filed October 9, 2017Signed Warren D. Smith P.L.S. or R.C.E. No. 4842Title County Surveyor

County Surveyor's Comment _____





REFERENCES

- (A) R.S. 23-1, S.J.C.R.
- (B) MINES ROAD, MAP NO. R-225-15, SHEET 13
- (C) 647 MAPS 38, A.C.R.

LEGEND

- INDICATES FOUND MONUMENT AS NOTED
- R.S. INDICATES RECORD OF SURVEY, BOOK AND PAGE, S.J.C.R.
- MAPS INDICATES PARCEL MAP, BOOK AND PAGE, A.C.R.
- S.J.C.R. INDICATES SAN JOAQUIN COUNTY RECORDS
- A.C.R. INDICATES ALAMEDA COUNTY RECORDS

MONUMENTS FOUND

- (A) FD. 1-1/2" IRON PIPE PER (B) W/PIPE CAP STAMPED "CO COR WP", CALLED 2" IRON PIPE PER (A)
- (B) FD. 1-1/2" IRON PIPE PER (B), NOT CAPPED, BENT NORTHERLY, CALLED 2" IRON PIPE PER (A), SHOT AT BASE AT SOUTHERLY SIDE
- (C) FD. 1-1/2" IRON PIPE PER (B) W/PIPE CAP STAMPED "CO COR WP", CALLED 2" IRON PIPE PER (A)
- (D) FD. 1-1/2" IRON PIPE PER (B), NOT CAPPED, CALLED 2" IRON PIPE PER (A), SET WASHER STAMPED "LS 4450 AND LS 4842" ON TOP OF PIPE
- (E) FD. 2" IRON PIPE W/BRASS CAP STAMPED "COUNTY LINE POINT 18 LS 3400" PER (C), 2" IRON PIPE LOCATED 2.33'(A) 2.2'(B) FROM OAK TREE

SCALE: 1" = 10'
2016-262