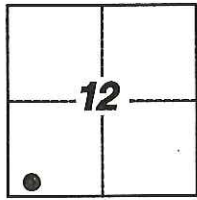


CORNER RECORD

Agency Index: CR-17-293

Document Number: _____

City of LODI County of SAN JOAQUIN, CaliforniaBrief Legal Description FOUND CITY OF LODI BENCHMARK

T.3N, R.6E

CORNER TYPE

- Government Corner Control
 Meander Property
 Rancho Other

Date of Survey 7-12-2017**COORDINATES (Optional)**

N. _____ E. _____

Elevation _____

Units Metric U.S. Survey Foot

Horizontal Datum _____

Zone _____ Epoch Date _____

Vertical Datum _____

 Complies with Public Resources Code §§8801-8819 Complies with Public Resources Code §§8890-8902PLS Act Ref: 8765(d) 8771 8773 Other:

Corner/Monument: Left as found Established Rebuilt Pre-Construction
 Found and Tagged Reestablished Referenced Post-Construction

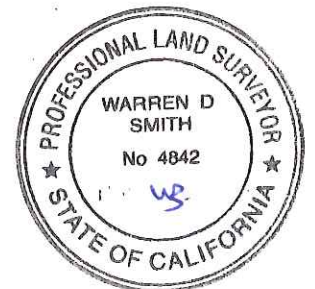
Narrative of corner identified and monument as found, set, reset, replaced, or removed:

 See sheet #2 for description(s):

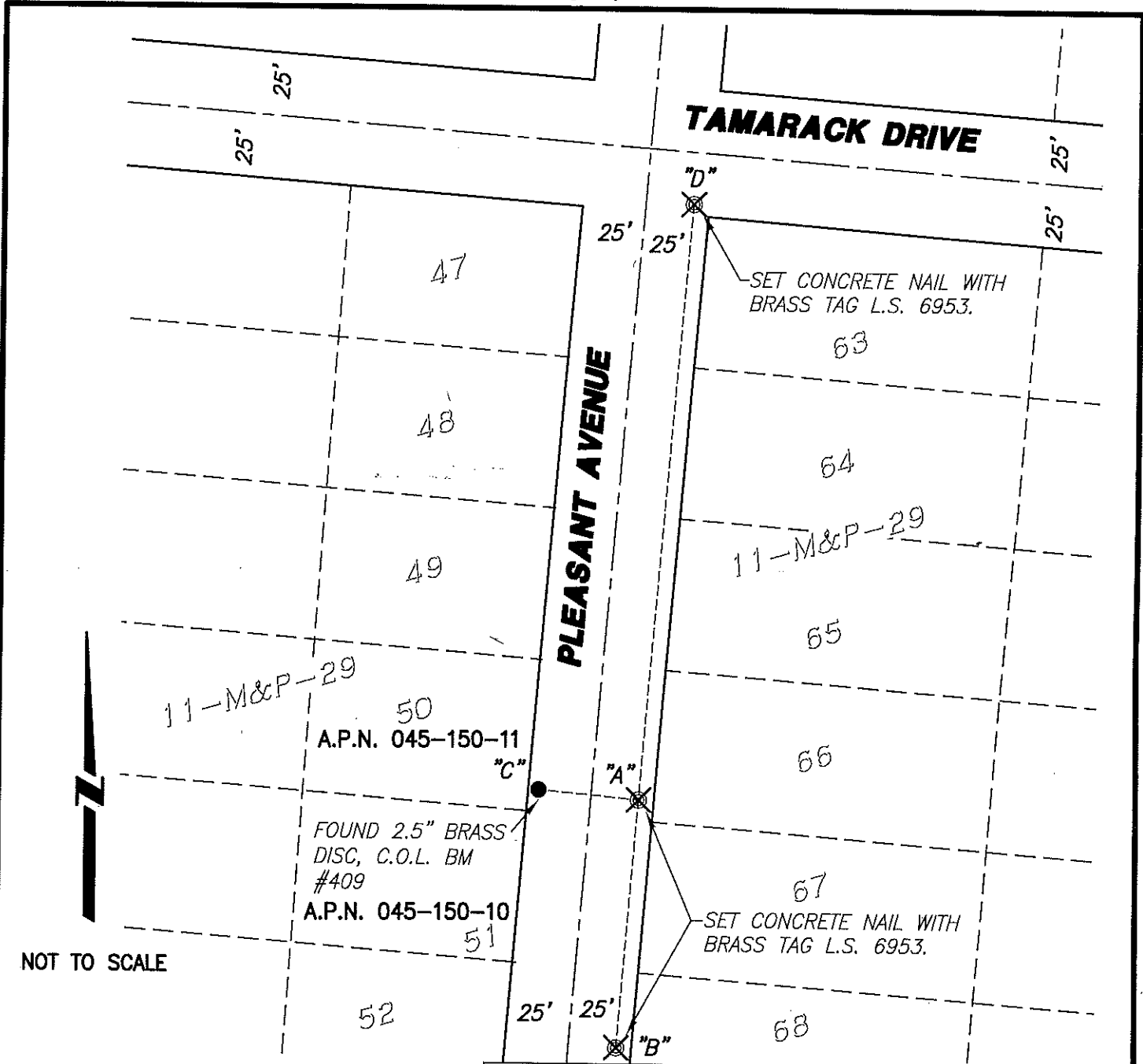
FOUND CITY OF LODI BENCHMARK No. 409; SET THREE (3) CONCRETE NAILS WITH BRASS TAG STAMPED
"LS 6953" AS WITNESS CORNERS, ALL AS SHOWN ON SHEET 2

SURVEYOR'S STATEMENT

This Corner Record was prepared by me or under my direction in conformance with
 the Land Surveyors' Act on JULY 21, 2017,

Signed [Signature] P.L.S. or R.C.E. Number 6953**COUNTY SURVEYOR'S STATEMENT**This Corner Record was received September 14, 2017and examined and filed October 9, 2017Signed [Signature] P.L.S. or R.C.E. No: 4842Title County Surveyor

County Surveyor's Comment _____



☒ AND DISTANCE TABLE

BS-@-FS	☒	FS DISTANCE	ELEVATION
B-A-B	00°00'00"	183.35'(M)	43.36'
B-A-C	89°48'51"	25.48'(M)	42.73'
B-A-D	180°00'00"	235.02'(M)	42.76'
POINT A			43.09'

LEGEND:

- ☒ SET MONUMENT AS NOTED.
- FOUND MONUMENT AS NOTED.
- M&P- MAPS & PLATS
- S.J.C.R. SAN JOAQUIN COUNTY RECORDS
- C.O.L. CITY OF LODI
- BM BENCHMARK
- (M) MEASURED DISTANCE. ALL DISTANCES ARE MEASURED UNLESS NOTED OTHERWISE.

REFERENCE:

(R1) 11-M&P-29 S.J.C.R.

NOTE:

THIS CORNER RECORD DOES NOT VERIFY THIS MONUMENT TO BE IN THE CORRECT POSITION.