

CORNER RECORD

Agency Index

CR-17-284

Document Number

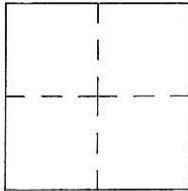
City of _____ County of San Joaquin, California

Brief Legal Description JAHANT ROAD @ GRIFFITH GATE LANE

On north line of Section 15, Township 4 North, Range 7 East, Mount Diablo Base & Meridian

CORNER TYPE

COORDINATES (Optional)

Government Corner ☐Control ☐

N. _____

E. _____

Elevation. _____

Meander ☐Property ☐

Units _____

Metric ☐U.S. Survey Foot ☒Rancho ☐Other ☐☒ Horizontal Datum _____

Zone _____

Epoch Date _____

Date of Survey July 27, 2017

Vertical Datum _____

☐ Complies with Public Resources Code §§8801-8819☐ Complies with Public Resources Code §§8890-8902

PLS Act Ref.:

☐ 8765(d)☒ 8771☐ 8773☐ Other:Corner/
Monument:☒ Left as found☐ Established☐ Rebuilt☒ Pre-Construction☐ Found and tagged☐ Reestablished☐ Referenced☐ Post-Construction

Narrative of corner identified and monument as found, set, reset, replaced, or removed:

☒ See sheet #2 for description(s):

SURVEYOR'S STATEMENT

This Corner Record was prepared by me or under my direction in conformance with

the Professional Land Surveyor's Act on September 05, 2017

Signed James E. Hart P.L.S. or R.C.E. No. 8657

COUNTY SURVEYOR'S STATEMENT

This Corner Record was received September 11, 2017

and examined and filed October 4, 2017

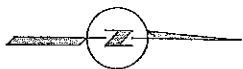
Signed Warren D. Smith P.L.S. or R.C.E. No. 4842

Title County Surveyor

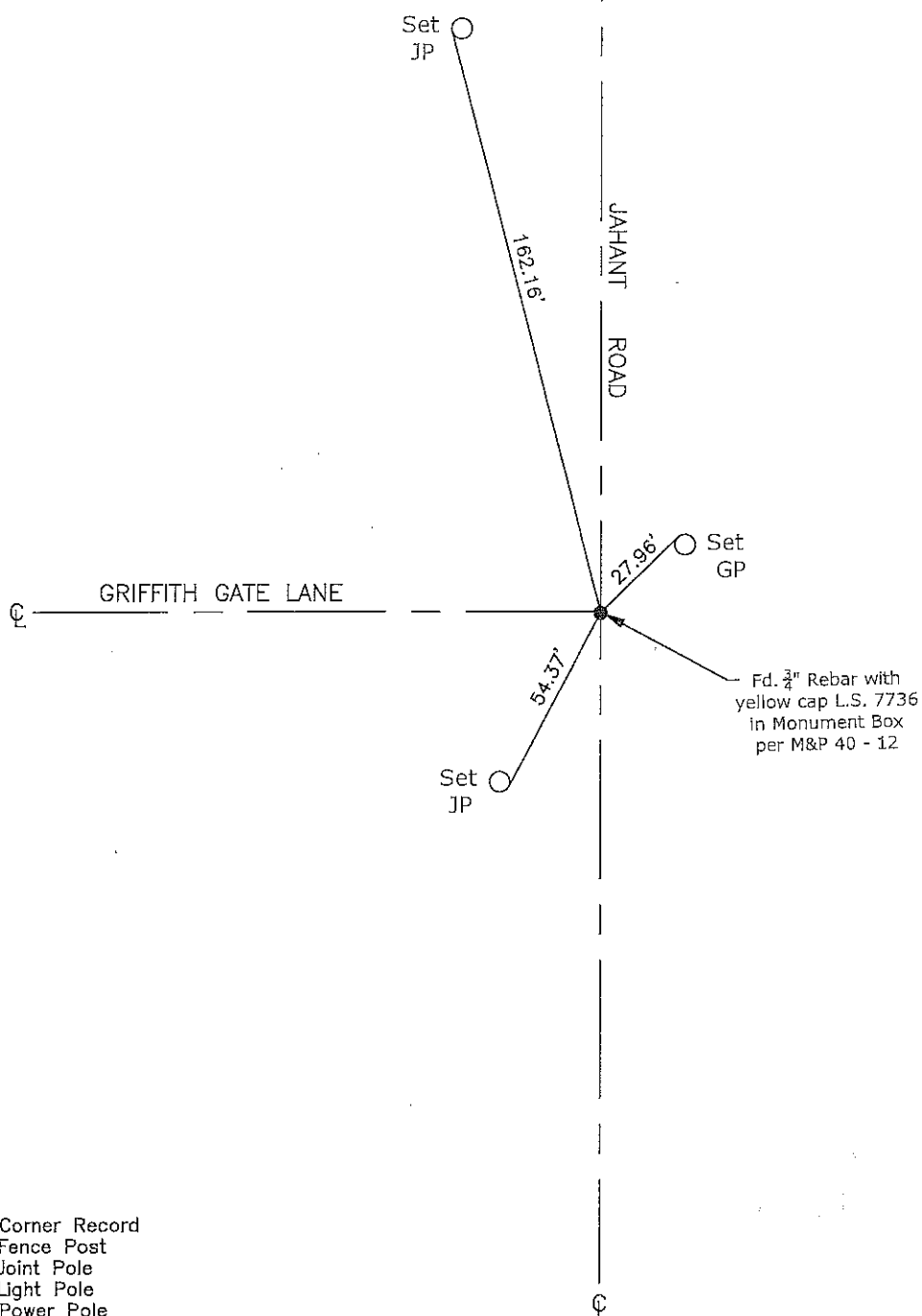
County Surveyor's Comment



N.T.S.



(FB. 711)



CR=Corner Record
 FP=Fence Post
 JP=Joint Pole
 LP=Light Pole
 PP=Power Pole
 GP=Guy Pole
 SP=Service Pole
 TP=Telephone Pole
 S.F.N.=Searched Found Nothing
 N.T.S.=Not To Scale
 M&P=Maps & Plats
 PM=Parcel Map
 RS=Record of Survey
 FB=Field Book
 N=North
 DI=Drain Inlet
 TOC=Top of Curb

Note: Found Monuments are not tagged unless otherwise noted.

"No Attempt Was Made to Verify the Monument(s)"

Set=Conc. Nail with Brass Washer Stamped
 "S.J. Co.", unless otherwise noted
 Fd.=Found Conc. Nail with Brass Washer Stamped
 "S.J. Co.", unless otherwise noted