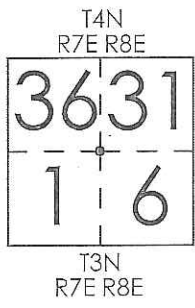


# CORNER RECORD

Agency Index CR-17-280  
 Document Number \_\_\_\_\_

City of \_\_\_\_\_ County of San Joaquin, California  
 Brief Legal Description JACK TONE ROAD @ BRANDT ROAD



**CORNER TYPE**

Government Corner  Control   
 Meander  Property   
 Rancho  Other

Date of Survey August 22, 2017

**COORDINATES (Optional)**

N. \_\_\_\_\_ E. \_\_\_\_\_  
 Elevation. \_\_\_\_\_  
 Units Metric  U.S. Survey Foot   
 Horizontal Datum \_\_\_\_\_  
 Zone \_\_\_\_\_ Epoch Date \_\_\_\_\_  
 Vertical Datum \_\_\_\_\_  
 Complies with Public Resources Code §§8801-8819  
 Complies with Public Resources Code §§8890-8902

PLS Act Ref.:  8765(d)  8771  8773  Other:

Corner/Monument:  Left as found  Established  Rebuilt  Pre-Construction  
 Found and tagged  Reestablished  Referenced  Post-Construction

Narrative of corner identified and monument as found, set, reset, replaced, or removed:  
 See sheet #2 for description(s):

### SURVEYOR'S STATEMENT

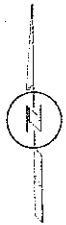
This Corner Record was prepared by me or under my direction in conformance with  
 the Professional Land Surveyor's Act on September 05, 2017  
 Signed James E. Hart P.L.S. or R.C.E. No. 8657



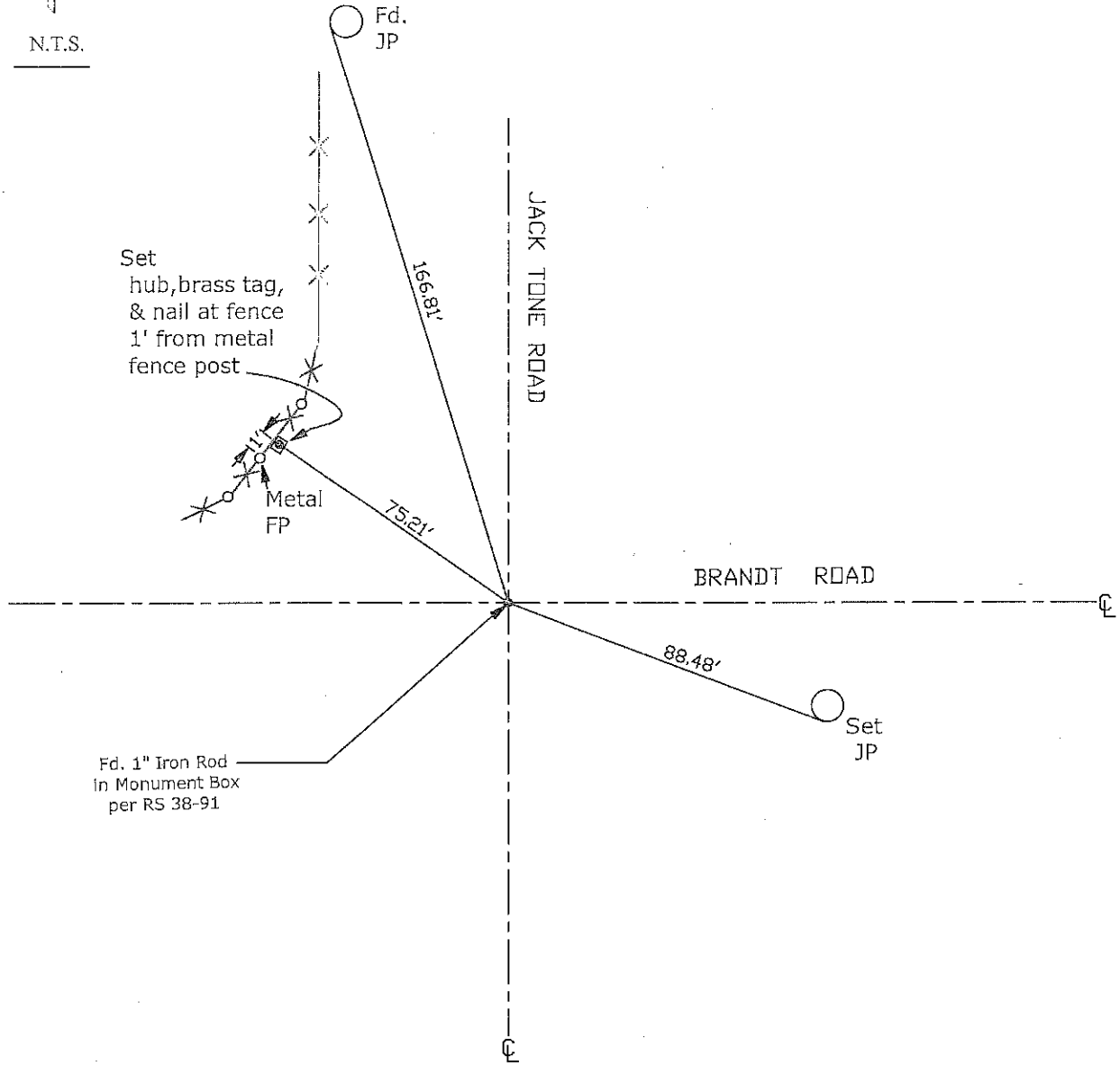
### COUNTY SURVEYOR'S STATEMENT

This Corner Record was received September 11, 2017  
 and examined and filed October 4, 2017  
 Signed Warren D. Smith P.L.S. or R.C.E. No. 4842  
 Title County Surveyor  
 County Surveyor's Comment \_\_\_\_\_





N.T.S.



- CR=Corner Record
- FP=Fence Post
- JP=Joint Pole
- LP=Light Pole
- PP=Power Pole
- GP=Guy Pole
- SP=Service Pole
- TP=Telephone Pole
- S.F.N.=Searched Found Nothing
- N.T.S.=Not To Scale
- M&P=Maps & Plats
- PM=Parcel Map
- RS=Record of Survey
- FB=Field Book
- N=North
- DI=Drain Inlet
- TDC=Top of Curb

Set=Conc. Nail with Brass Washer Stamped  
 "S.J. Co.", unless otherwise noted  
 Fd.=Found Conc. Nail with Brass Washer Stamped  
 "S.J. Co.", unless otherwise noted  
 Note: Found Monuments are not tagged  
 unless otherwise noted.

'No Attempt Was Made to Verify the Monument(s)'