

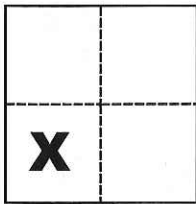
CORNER RECORD

Agency Index CR-17-273

Document Number _____

City of _____ County of San Joaquin, California

Brief Legal Description _____ Parcel Four per Doc. No. 2016-053946, S.J.C.R.

CORNER TYPE**COORDINATES (Optional)**
 Government Corner Control
 Meander Property
 Rancho Other

N. _____ E. _____

Elevation _____

Units Metric U.S. Survey Foot

Horizontal Datum _____

Zone _____ Epoch Date _____

Date of Survey August 1, 2017

Vertical Datum _____

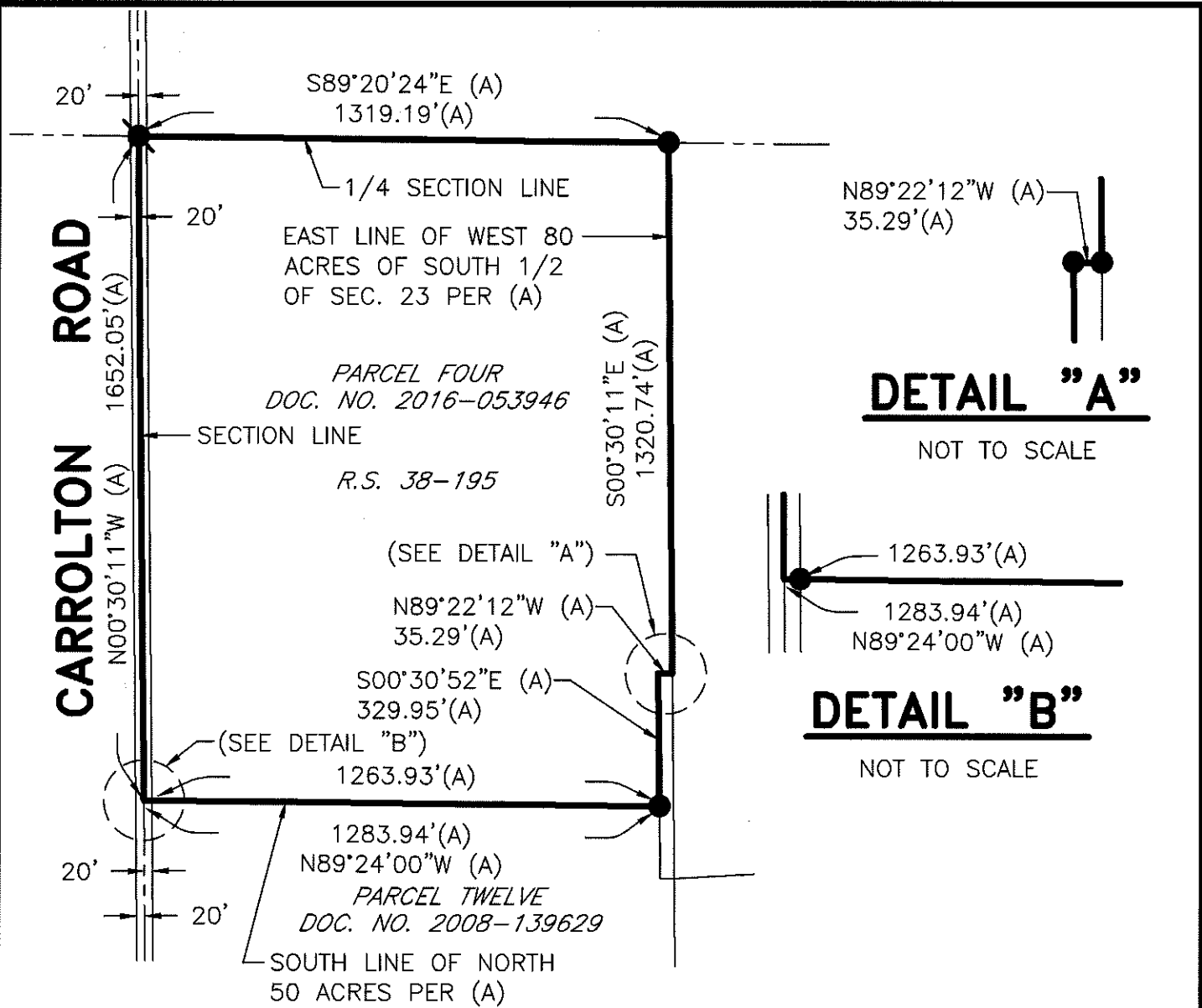
 Complies with Public Resources Code §§8801-8819 Complies with Public Resources Code §§8890-8902Sec. 23, T.1S., R.8E.,
M.D.B. & M.PLS Act Ref.: 8765(d) 8771 8773 Other:Corner/Monument: Left as found Established Rebuilt Pre-Construction Found and tagged Reestablished Referenced Post-Construction

Narrative of corner identified and monument as found, set, reset, replaced, or removed:

 See sheet #2 for description(s):**SURVEYOR'S STATEMENT**

This Corner Record was prepared by me or under my direction in conformance with

the Professional Land Surveyors' Act on Aug. 15, 2017Signed Michael L. Quatral P.L.S. or R.C.E. No. L.S. 4450**COUNTY SURVEYOR'S STATEMENT**This Corner Record was received September 12, 2017and examined and filed September 22, 2017Signed Warren D. Smith P.L.S. or R.C.E. No. 4842Title County Surveyor**County Surveyor's Comment**

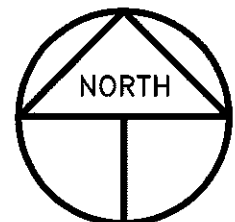


LEGEND

- INDICATES FD. BRASS DISC STAMPED RE 933 IN MON. BOX AT 1/4 SEC. COR. COMMON TO SECTION 22 AND 23, T.1S., R.8E., M.D.B. & M. PER (A)
- INDICATES FD. 3/4" IRON PIPE W/PLASTIC CAP STAMPED LS 7126 PER (A)
- R.S. INDICATES RECORD OF SURVEY, BOOK AND PAGE, S.J.C.R.
- DOC. NO. INDICATES DOCUMENT NUMBER, S.J.C.R.
- S.J.C.R. INDICATES SAN JOAQUIN COUNTY RECORDS

REFERENCE

(A) R.S. 38-195, S.J.C.R.



SCALE: 1" = 400'
2017-160