

CORNER RECORD

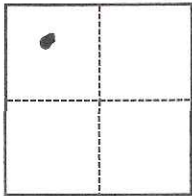
Agency Index CR-17-270
Document Number _____

City of STOCKTON County of SAN JOAQUIN, California

Brief Legal Description _____

CORNER TYPE

COORDINATES (Optional)



SEC 8 T.2N.
R. 6 E.

- Government Corner
- Meander
- Rancho
- Control
- Property
- Other

Date of Survey August 5, 2017

N. _____ E. _____
 Elevation _____
 Units Metric U.S. Survey Foot
 Horizontal Datum _____
 Zone _____ Epoch Date _____
 Vertical Datum _____
 Complies with Public Resources Code §§8801-8819
 Complies with Public Resources Code §§8890-8902

- PLS Act Ref.: 8765(d) 8771 8773 Other: _____
- Corner/Monument: Left as found Established Rebuilt Pre-Construction
 Found and tagged Reestablished Referenced Post-Construction

Narrative of corner identified and monument as found, set, reset, replaced, or removed:

See sheet #2 for description(s):

**STONEWOOD ESTATES UNIT NO. 1, LOT 41
VOL. 24, PG. 54, SAN JOAQUIN COUNTY RECORDS
SET BRASS TAG "L.S. 6939" ON SIDEWALK. OVER EXISTING CROSS ON SIDEWALK
TAG IS A 5.00 FT. WITNESS CORNER TO THE FRONT LOT CORNER.**

SURVEYOR'S STATEMENT

This Corner Record was prepared by me or under my direction in conformance with

the Professional Land Surveyors' Act on August 5th, 2017

Signed Michael D. Farley P.L.S. or R.C.E. No. L.S. 6939



COUNTY SURVEYOR'S STATEMENT

This Corner Record was received August 22, 2017

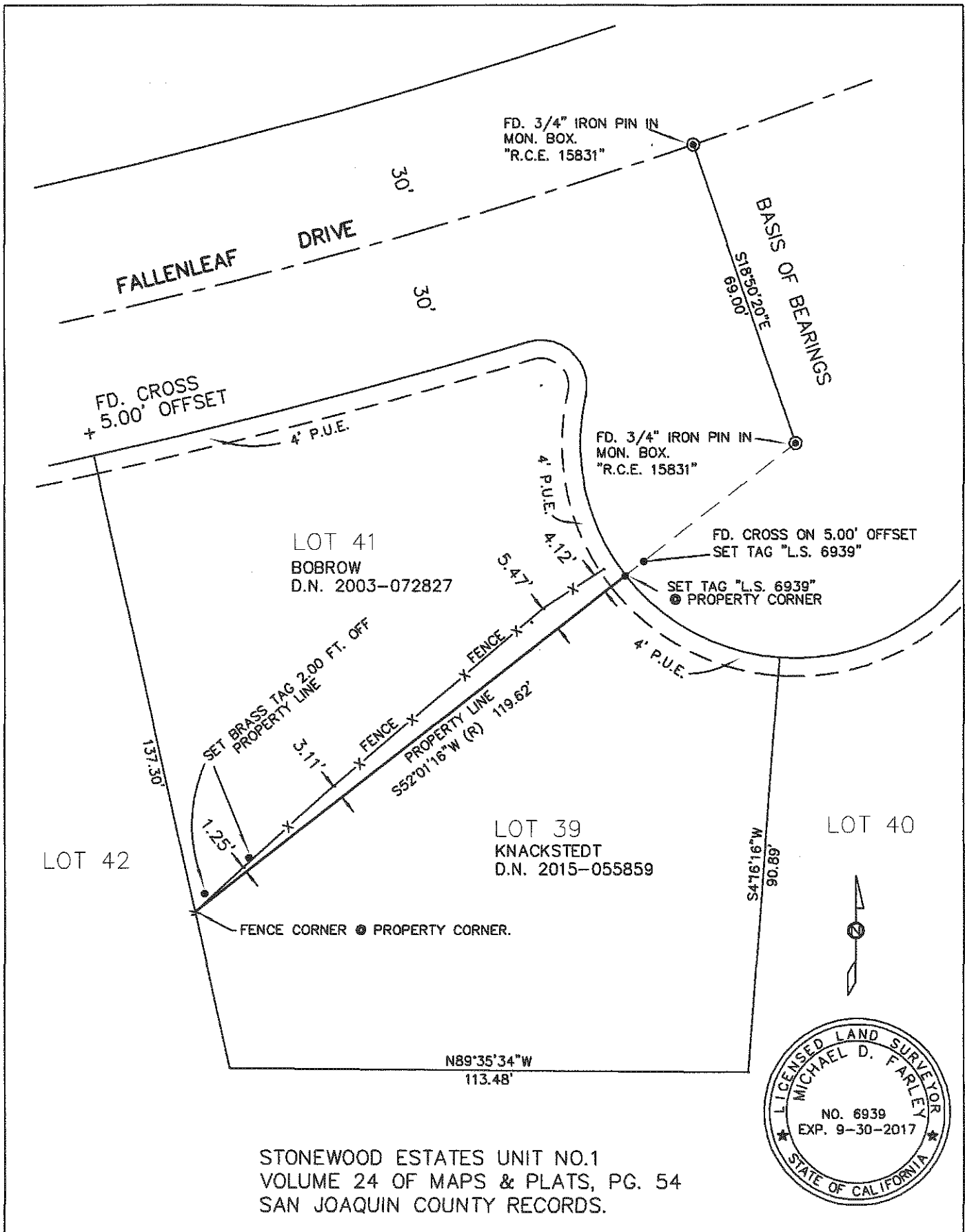
and examined and filed September 8, 2017

Signed Warren D. Smith P.L.S. or R.C.E. No. 4842

Title County Surveyor

County Surveyor's Comment _____





STONEWOOD ESTATES UNIT NO.1
 VOLUME 24 OF MAPS & PLATS, PG. 54
 SAN JOAQUIN COUNTY RECORDS.



NO.	REV. DATE	BY	APRVD.	2610 FALLENLEAF DR. STOCKTON, CA.	APPROVED BY	
DWG. BY				MICHAEL D. FARLEY LAND SURVEYOR #6939	DATE	DRAWING NO.
CK. BY					08/05/17	
SCALE NONE						