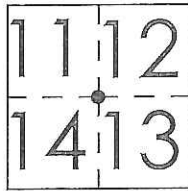


CORNER RECORD

Agency Index CR-17-259
Document Number _____

City of _____ County of San Joaquin, California
Brief Legal Description Waverly Road @ Funck Road



T1N R10E
MDB&M

CORNER TYPE

Government Corner Control
 Meander Property
 Rancho Other

Date of Survey August 09, 2017

COORDINATES (Optional)

N. _____ E. _____
 Elevation. _____
 Units Metric U.S. Survey Foot
 Horizontal Datum _____
 Zone _____ Epoch Date _____
 Vertical Datum _____

Complies with Public Resources Code §§8801-8819
 Complies with Public Resources Code §§8890-8902

PLS Act Ref.: 8765(d) 8771 8773 Other:

Corner/Monument: Left as found Established Rebuilt Pre-Construction
 Found and tagged Reestablished Referenced Post-Construction

Narrative of corner identified and monument as found, set, reset, replaced, or removed:
 See sheet #2 for description(s):

SURVEYOR'S STATEMENT

This Corner Record was prepared by me or under my direction in conformance with
the Professional Land Surveyor's Act on August 23, 2017
Signed James E Hart P.L.S. or R.C.E. No. 8657

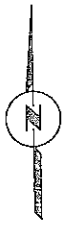


COUNTY SURVEYOR'S STATEMENT

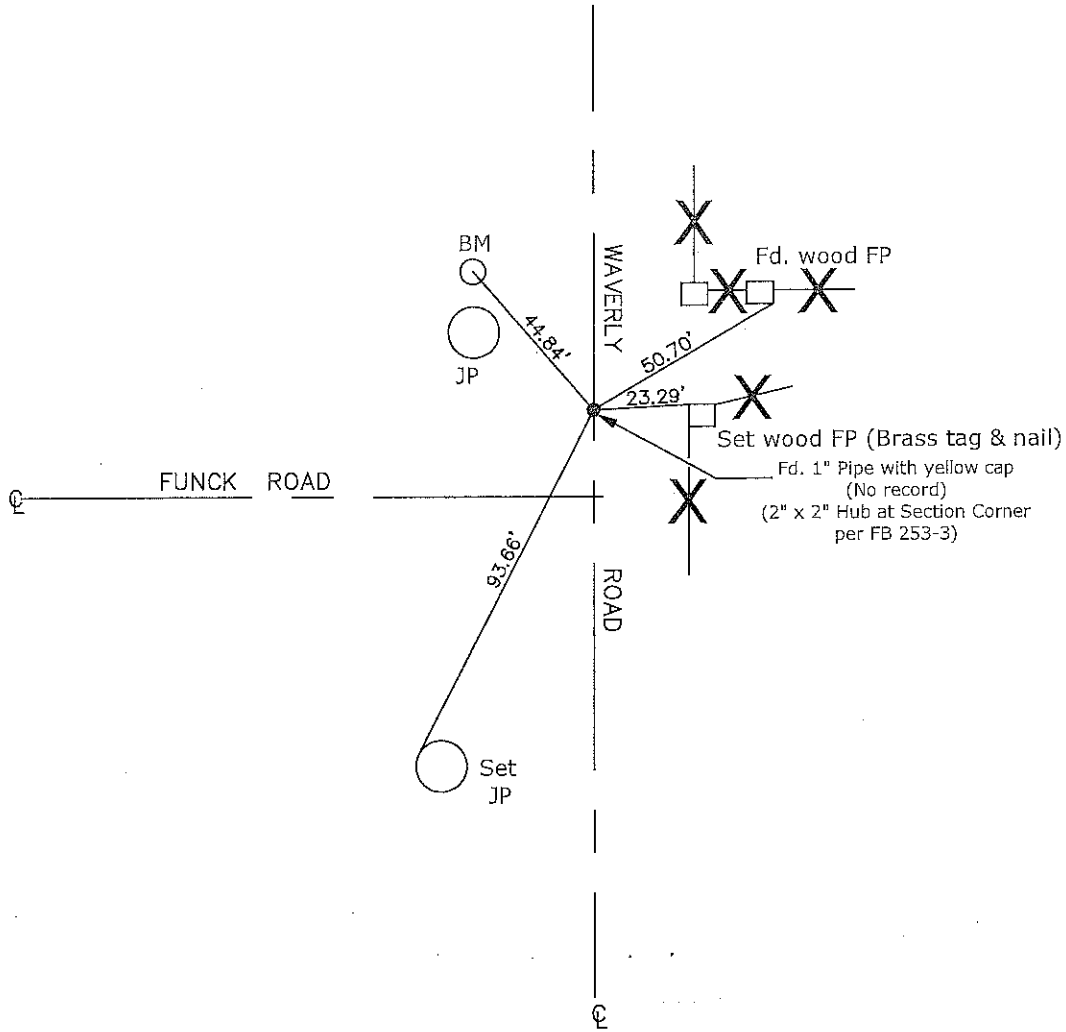
This Corner Record was received August 23, 2017
and examined and filed September 7, 2017
Signed Warren D. Smith P.L.S. or R.C.E. No. 4842
Title County Surveyor



County Surveyor's Comment



N.T.S.



- BM=Bench Mark
- CR=Corner Record
- FP=Fence Post
- JP=Joint Pole
- LP=Light Pole
- PP=Power Pole
- GP=Guy Pole
- SP=Service Pole
- TP=Telephone Pole
- S.F.N.=Searched Found Nothing
- N.T.S.=Not To Scale
- M&P=Maps & Plats
- PM=Parcel Map
- RS=Record of Survey
- FB=Field Book
- N=North
- DI=Drain Inlet
- TOC=Top of Curb

Set=Conc. Nail with Brass Washer Stamped
 "S.J. Co.", unless otherwise noted
 Fd.=Found Conc. Nail with Brass Washer Stamped
 "S.J. Co.", unless otherwise noted
 Note: Found Monuments are not tagged
 unless otherwise noted.

"No Attempt Was Made to Verify the Monument(s)"