

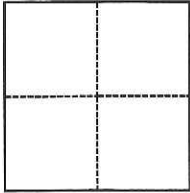
# CORNER RECORD

Agency Index CR-17-241  
Document Number \_\_\_\_\_

City of STOCKTON County of SAN JOAQUIN, California  
Brief Legal Description North-West corner of lot 2 in block 9 according to vol.3 of M&P page 7

### CORNER TYPE

### COORDINATES (Optional)



- Government Corner
- Meander
- Rancho
- Control
- Property
- Other

Date of Survey August 4, 2010

N. \_\_\_\_\_ E. \_\_\_\_\_  
 Elevation \_\_\_\_\_  
 Units  Metric  U.S. Survey Foot  
 Horizontal Datum \_\_\_\_\_  
 Zone \_\_\_\_\_ Epoch Date \_\_\_\_\_  
 Vertical Datum \_\_\_\_\_  
 Complies with Public Resources Code §§8801-8819  
 Complies with Public Resources Code §§8890-8902

PLS Act Ref.:  8765(d)  8771  8773  Other:  
 Corner/Monument:  Left as found  Established  Rebuilt  Pre-Construction  
 Found and tagged  Reestablished  Referenced  Post-Construction

Narrative of corner identified and monument as found, set, reset, replaced, or removed:

See sheet #2 for description(s):

### SURVEYOR'S STATEMENT

This Corner Record was prepared by me or under my direction in conformance with the Professional Land Surveyors' Act on August 4, 2010

Signed [Signature] P.L.S. or R.C.E. No. PLS 8513



### COUNTY SURVEYOR'S STATEMENT

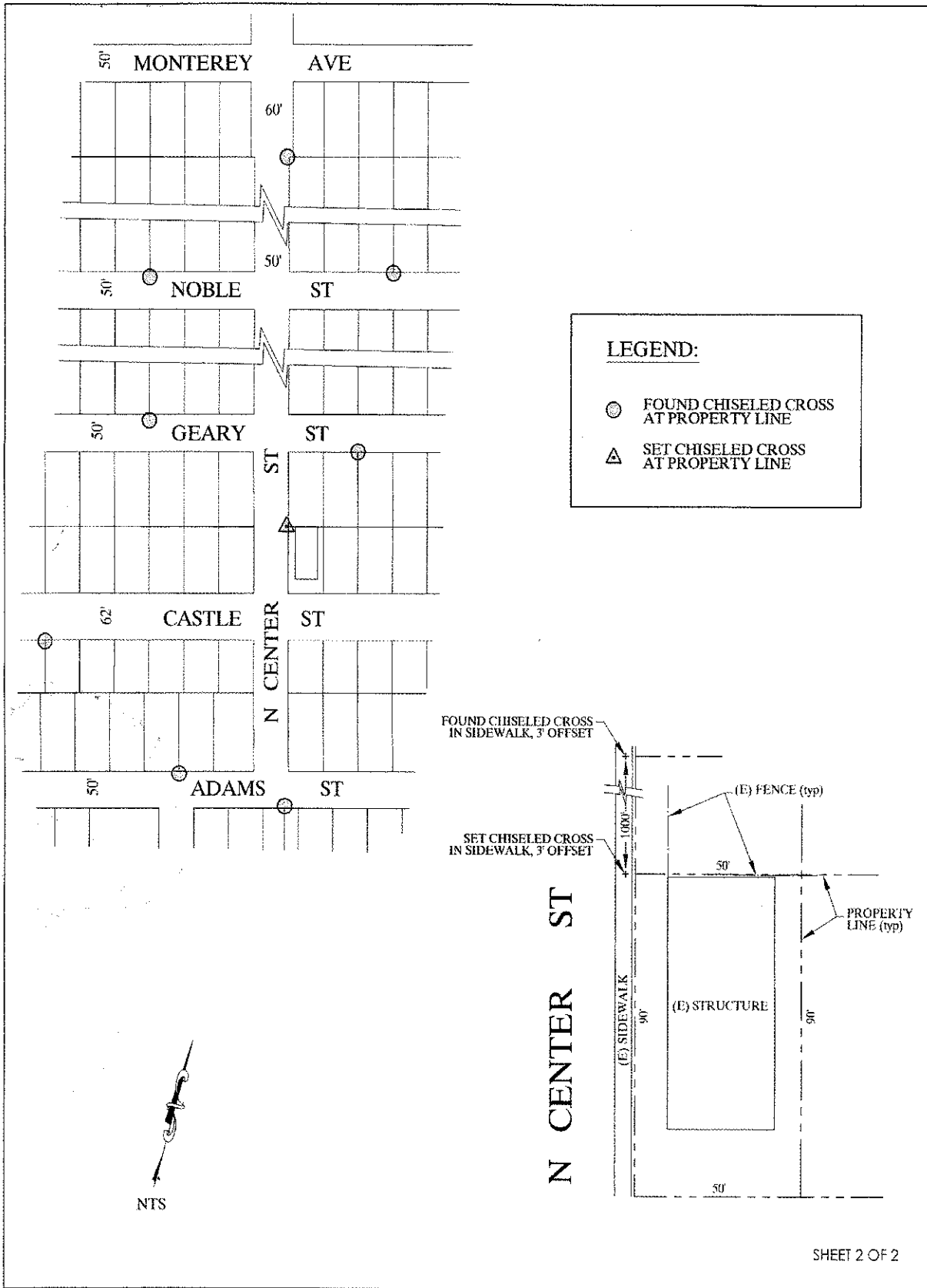
This Corner Record was received August 15, 2017 and examined and filed September 7, 2017

Signed Warren D. Smith P.L.S. or R.C.E. No. 4842

Title County Surveyor

County Surveyor's Comment





SHEET 2 OF 2