

CORNER RECORD

Agency Index CR-17-224

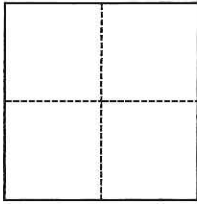
Document Number _____

City of TRACY County of SAN JOAQUIN, California

Brief Legal Description Corral Hollow Road and Linne Road

CORNER TYPE

COORDINATES (Optional)



- Government Corner
- Meander
- Rancho
- Control
- Property
- Other

N. _____ E. _____

Elevation _____

Units Metric U.S. Survey Foot

Horizontal Datum _____

Zone _____ Epoch Date _____

Vertical Datum _____

Complies with Public Resources Code §§8801-8819

Complies with Public Resources Code §§8890-8902

PLS Act Ref.: 8765(d) 8771 8773 Other:

Corner/Monument: Left as found Established Rebuilt Pre-Construction

Found and tagged Reestablished Referenced Post-Construction

Narrative of corner identified and monument as found, set, reset, replaced, or removed:

See sheet #2 for description(s):

PRE-CONSTRUCTION DOCUMENTATION OF TWO FOUND MONUMENTS NEAR THE INTERSECTION OF CORRAL HOLLOW ROAD AND LINNE ROAD SEE ATTACHED SKETCH.

SURVEYOR'S STATEMENT

This Corner Record was prepared by me or under my direction in conformance with

the Professional Land Surveyors' Act on July 13, 2017

Signed *S. Kyle Pack* P.L.S. or R.C.E. No. 8164



COUNTY SURVEYOR'S STATEMENT

This Corner Record was received July 26, 2017

and examined and filed August 11, 2017

Signed *Warren D. Smith* P.L.S. or R.C.E. No. 4842

Title County Surveyor

County Surveyor's Comment

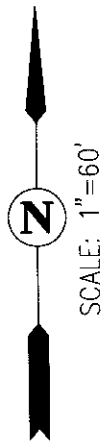


NOTE

THE INTENT IS TO ESTABLISH REFERENCE TIES TO FOUND MONUMENTS, NOT TO SPECIFY HOW THOSE MONUMENTS RELATE TO PROPERTY LINES. MAP REFERENCES ARE GEOGRAPHIC REFERENCES ONLY.

LEGEND

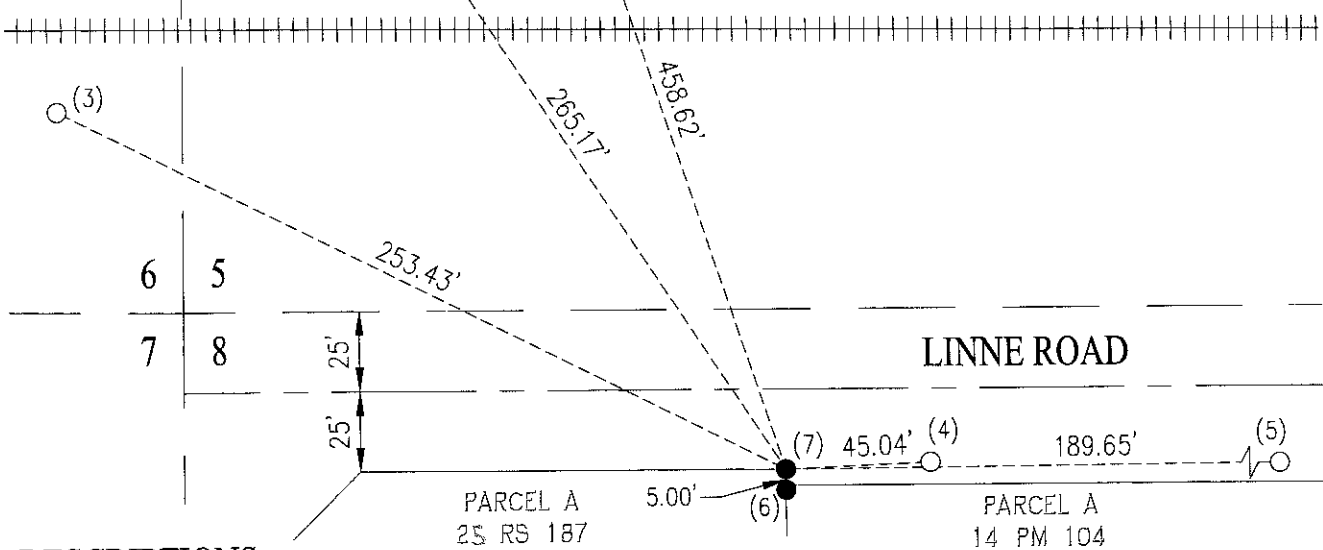
- FOUND BRASS DISK, AS NOTED
- FOUND IRON PIPE, AS NOTED
- REBAR REFERENCE MARKER
- ⊗ CUT + REFERENCE MARKER
- SECTION LINE
- - - TIE LINE



CORRAL HOLLOW ROAD

LOT 12
TRACT 2829
34 M&P 75

UPRR



DESCRIPTIONS

- (1) FOUND 2" BRASS DISK ON TOP OF CURB STAMPED "CITY OF TRACY 2079 BENCHMARK HORIZONTAL CONTROL
- (2) CUT + ON CURB, 5.5' NORTHWEST OF FIRE HYDRANT
- (3) REBAR AND CAP STAMPED "CBG CONTROL", 2' NORTHEAST OF THE NORTHEASTERN CORNER OF UPRR CROSSING GEAR BUILDING
- (4) REBAR & CAP STAMPED "CBG CONTROL", 3' SOUTHEAST OF POWER POLE "C3046"
- (5) REBAR & CAP STAMPED "CBG CONTROL", 3' SOUTHWEST OF POWER POLE "110415835"
- (6) FOUND 5/8" REBAR, NO CAP
- (7) FOUND 1" IRON PIPE, OPEN