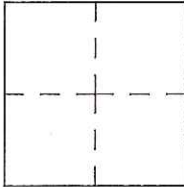


# CORNER RECORD

Agency Index CR-17-219  
Document Number \_\_\_\_\_

City of \_\_\_\_\_ County of San Joaquin, California

Brief Legal Description SECOND STREET @ ELM STREET  
( Within Section 13, C.M. Weber Grant )



### CORNER TYPE

Government Corner  Control   
Meander  Property   
Rancho  Other

Date of Survey July 28, 2017

### COORDINATES (Optional)

N. \_\_\_\_\_ E. \_\_\_\_\_

Elevation. \_\_\_\_\_

Units Metric  U.S. Survey Foot

Horizontal Datum \_\_\_\_\_

Zone \_\_\_\_\_ Epoch Date \_\_\_\_\_

Vertical Datum \_\_\_\_\_

Complies with Public Resources Code §§8801-8819

Complies with Public Resources Code §§8890-8902

PLS Act Ref.:  8765(d)  8771  8773  Other:

Corner/ Monument:  Left as found  Established  Rebuilt  Pre-Construction

Found and tagged  Reestablished  Referenced  Post-Construction

Narrative of corner identified and monument as found, set, reset, replaced, or removed:

See sheet #2 for description(s):

### SURVEYOR'S STATEMENT

This Corner Record was prepared by me or under my direction in conformance with

the Professional Land Surveyor's Act on August 3, 2017

Signed James E. Hart P.L.S. or R.C.E. No. 8657



### COUNTY SURVEYOR'S STATEMENT

This Corner Record was received August 3, 2017

and examined and filed August 11, 2017

Signed Warren D. Smith P.L.S. or R.C.E. No. 4842

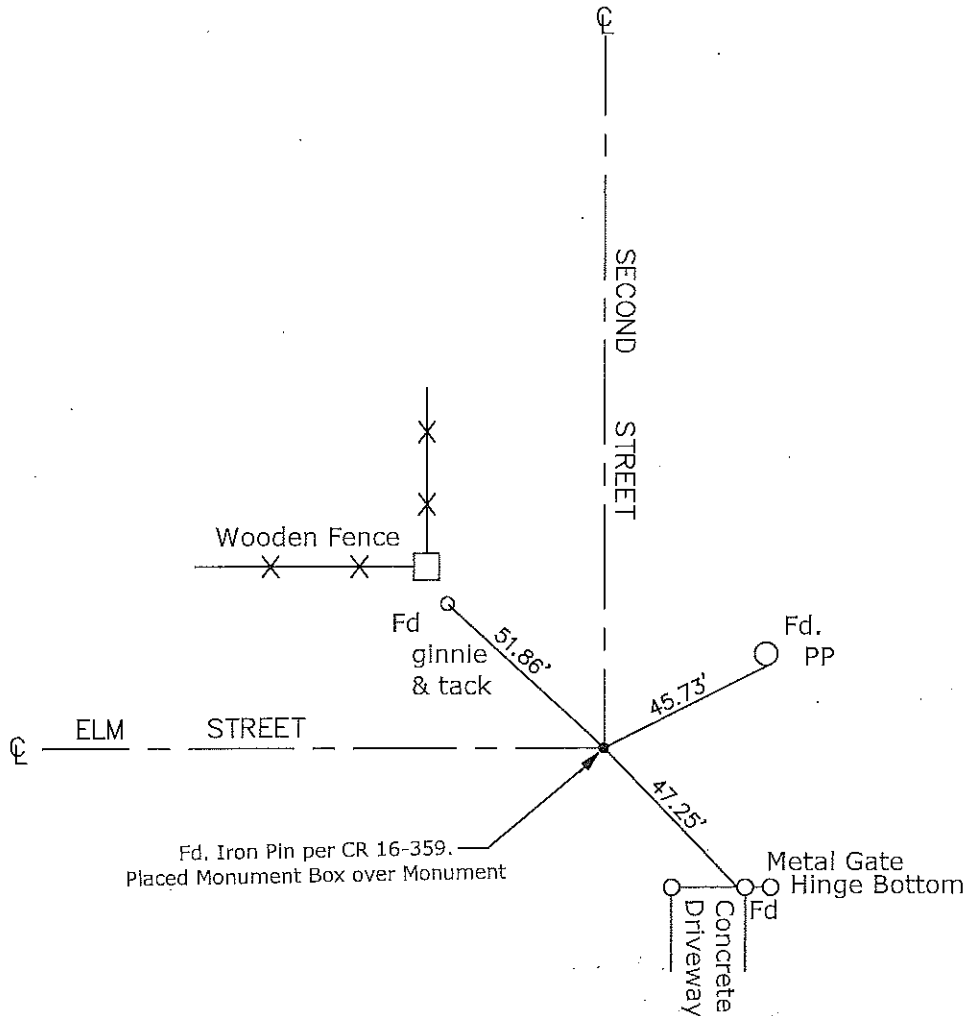
Title County Surveyor

County Surveyor's Comment





N.T.S.



- CR=Corner Record
- FP=Fence Post
- JP=Joint Pole
- LP=Light Pole
- PP=Power Pole
- GP=Guy Pole
- SP=Service Pole
- TP=Telephone Pole
- S.F.N.=Searched Found Nothing
- N.T.S.=Not To Scale
- M&P=Maps & Plats
- PM=Parcel Map
- RS=Record of Survey
- FB=Field Book
- N=North
- DJ=Drain Inlet
- TOC=Top of Curb

Set=Conc. Nail with Brass Washer Stamped  
 "S.J. Co.", unless otherwise noted  
 Fd.=Found Conc. Nail with Brass Washer Stamped  
 "S.J. Co.", unless otherwise noted  
 Note: Found Monuments are not tagged  
 unless otherwise noted.

"No Attempt Was Made to Verify the Monument(s)"