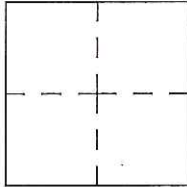


# CORNER RECORD

Agency Index CR-17-218

Document Number \_\_\_\_\_

City of \_\_\_\_\_ County of San Joaquin, CaliforniaBrief Legal Description ELM STREET @ SEVENTH STREET IN FRENCH CAMP  
(Within Section 13, C.M. Weber Grant)**CORNER TYPE**Government Corner  Control   
Meander  Property   
Rancho  Other Date of Survey July 28, 2017**COORDINATES (Optional)**

N. \_\_\_\_\_ E. \_\_\_\_\_

Elevation. \_\_\_\_\_

Units Metric  U.S. Survey Foot 

Horizontal Datum \_\_\_\_\_

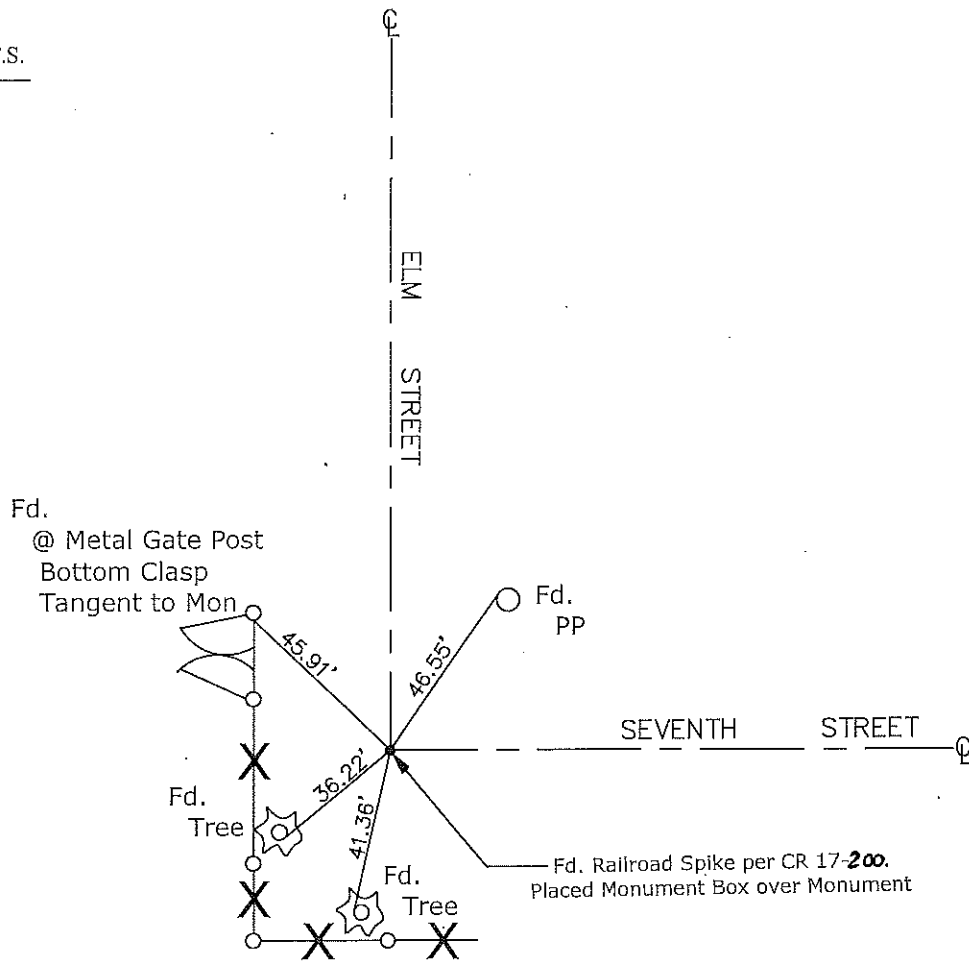
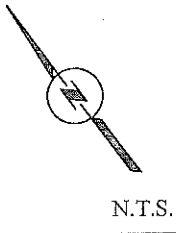
Zone \_\_\_\_\_ Epoch Date \_\_\_\_\_

Vertical Datum \_\_\_\_\_

 Complies with Public Resources Code §§8801-8819 Complies with Public Resources Code §§8890-8902PLS Act Ref.:  8765(d)  8771  8773  Other: \_\_\_\_\_Corner/Monument:  Left as found  Established  Rebuilt  Pre-Construction Found and tagged  Reestablished  Referenced  Post-Construction

Narrative of corner identified and monument as found, set, reset, replaced, or removed:

 See sheet #2 for description(s):**SURVEYOR'S STATEMENT**This Corner Record was prepared by me or under my direction in conformance with  
the Professional Land Surveyor's Act on August 3, 2017Signed James E. Hart P.L.S. or R.C.E. No. 8657**COUNTY SURVEYOR'S STATEMENT**This Corner Record was received August 3, 2017and examined and filed August 11, 2017Signed Warren D. Smith P.L.S. or R.C.E. No. 4842Title County Surveyor**County Surveyor's Comment**



CR=Corner Record  
 FP=Fence Post  
 JP=Joint Pole  
 LP=Light Pole  
 PP=Power Pole  
 GP=Guy Pole  
 SP=Service Pole  
 TP=Telephone Pole  
 S.F.N.=Searched Found Nothing  
 N.T.S.=Not To Scale  
 M&P=Maps & Plats  
 PM=Parcel Map  
 RS=Record of Survey  
 FB=Field Book  
 N=North  
 DI=Drain Inlet  
 TOC=Top of Curb

Set=Conc. Nail with Brass Washer Stamped  
 "S.J. Co.", unless otherwise noted  
 Fd.=Found Conc. Nail with Brass Washer Stamped  
 "S.J. Co.", unless otherwise noted  
 Note: Found Monuments are not tagged  
 unless otherwise noted.

"No Attempt Was Made to Verify the Monument(s)"