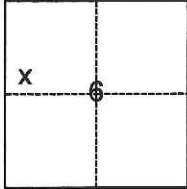


CORNER RECORD

Agency Index CR-17-211

Document Number _____

City of _____ County of San Joaquin, CaliforniaBrief Legal Description _____ A.P.N. 053-020-20**CORNER TYPE****COORDINATES (Optional)**

- Government Corner Control
 Meander Property
 Rancho Other

Date of Survey June 13, 2017

N. _____ E. _____

Elevation _____

Units Metric U.S. Survey Foot

Horizontal Datum _____

Zone _____ Epoch Date _____

Vertical Datum _____

 Complies with Public Resources Code §§8801-8819 Complies with Public Resources Code §§8890-8902

T.3N., R.8E., M.D.M.

PLS Act Ref.:

 8765(d) 8771 8773 Other:Corner/
Monument: Left as found Established Rebuilt Pre-Construction Found and tagged Reestablished Referenced Post-Construction

Narrative of corner identified and monument as found, set, reset, replaced, or removed:

 See sheet #2 for description(s):**SURVEYOR'S STATEMENT**

This Corner Record was prepared by me or under my direction in conformance with

the Professional Land Surveyors' Act on July 18, 2017

Signed

(P.L.S.) or R.C.E. No.

7269**COUNTY SURVEYOR'S STATEMENT**

This Corner Record was received

July 18, 2017

and examined and filed

August 8, 2017

Signed

P.L.S. or R.C.E. No.

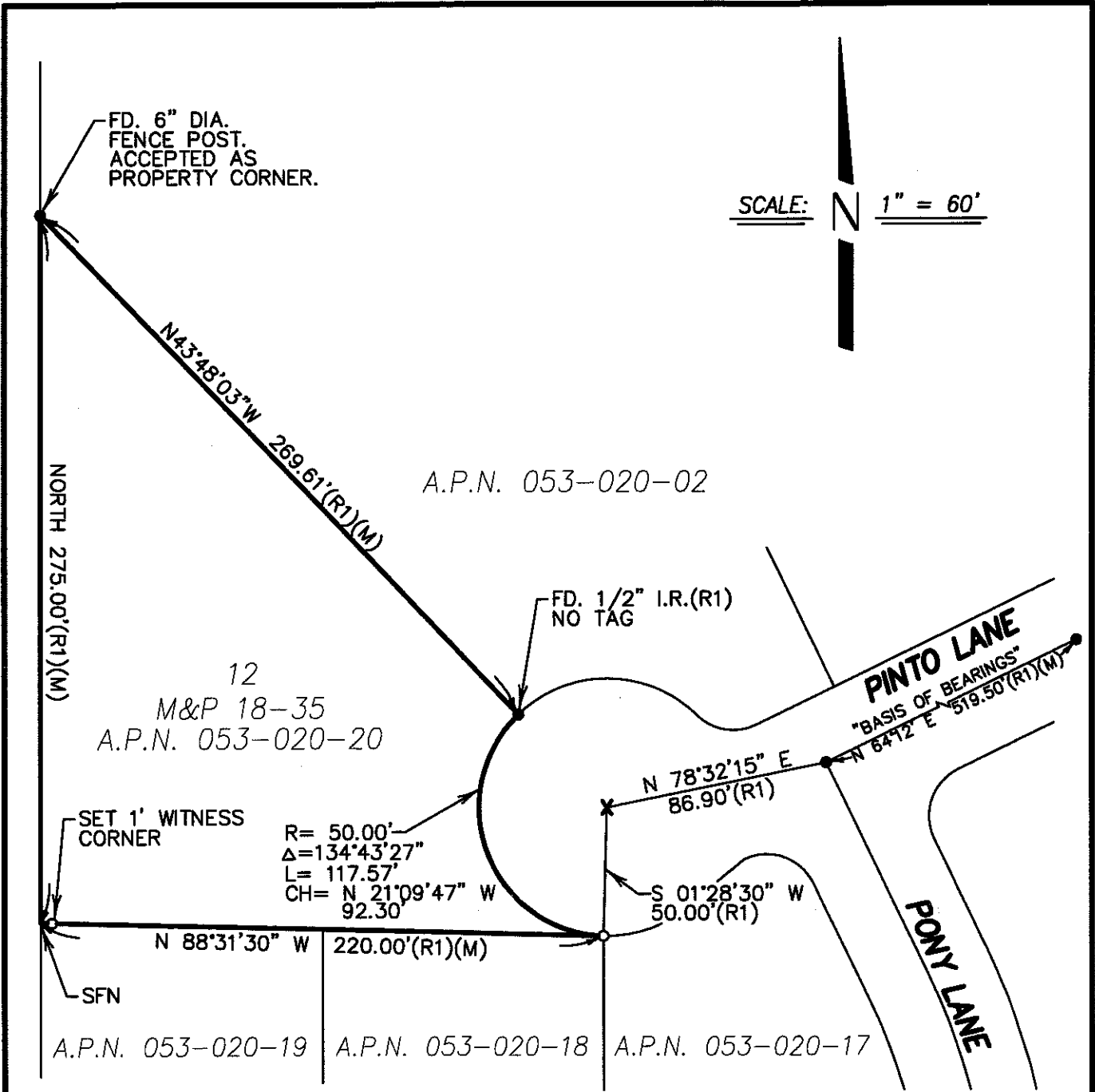
4842

Title

County Surveyor

County Surveyor's Comment





LEGEND

- SET 3/4" X 30" IRON ROD WITH CAP STAMPED L.S. 7269.
- FOUND 3/4" IRON ROD UNLESS OTHERWISE NOTED.
- FD. FOUND
- M&P MAPS AND PLATS
- SFN SEARCHED FOUND NOTHING
- (M) MEASURED
- I.R. IRON ROD
- X CALCULATED POINT
- DIA. DIAMETER

REFERENCE

(R1) M&P 18-35

DILLON & MURPHY
CONSULTING CIVIL ENGINEERS
ENGINEERING · PLANNING · SURVEYING
847 N. CLIFF AVENUE, SUITE A-2, LODI, CALIFORNIA, 95240 (209) 334-0613

1759