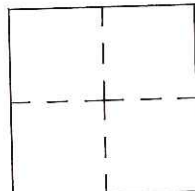


CORNER RECORD

Agency Index CR-17-203
Document Number _____

City of _____ County of San Joaquin, California

Brief Legal Description SIXTH STREET @ ELM STREET
(Within Section T3, C.M. Weber Grant)



CORNER TYPE

Government Corner Control Elevation. _____
 Meander Property Units Metric U.S. Survey Foot
 Rancho Other Horizontal Datum _____
 Date of Survey June 21, 2017 Zone _____ Epoch Date _____
 Vertical Datum _____
 Complies with Public Resources Code §§8801-8819
 Complies with Public Resources Code §§8890-8902

COORDINATES (Optional)

PLS Act Ref.: 8765(d) 8771 8773 Other:
 Corner/Monument: Left as found Established Rebuilt Pre-Construction
 Found and tagged Reestablished Referenced Post-Construction

Narrative of corner identified and monument as found, set, reset, replaced, or removed:
 See sheet #2 for description(s):

SURVEYOR'S STATEMENT

This Corner Record was prepared by me or under my direction in conformance with the Professional Land Surveyor's Act on July 14, 2017
Signed James E. Hart P.L.S. or R.C.E. No. 8657

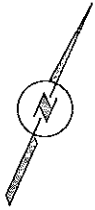


COUNTY SURVEYOR'S STATEMENT

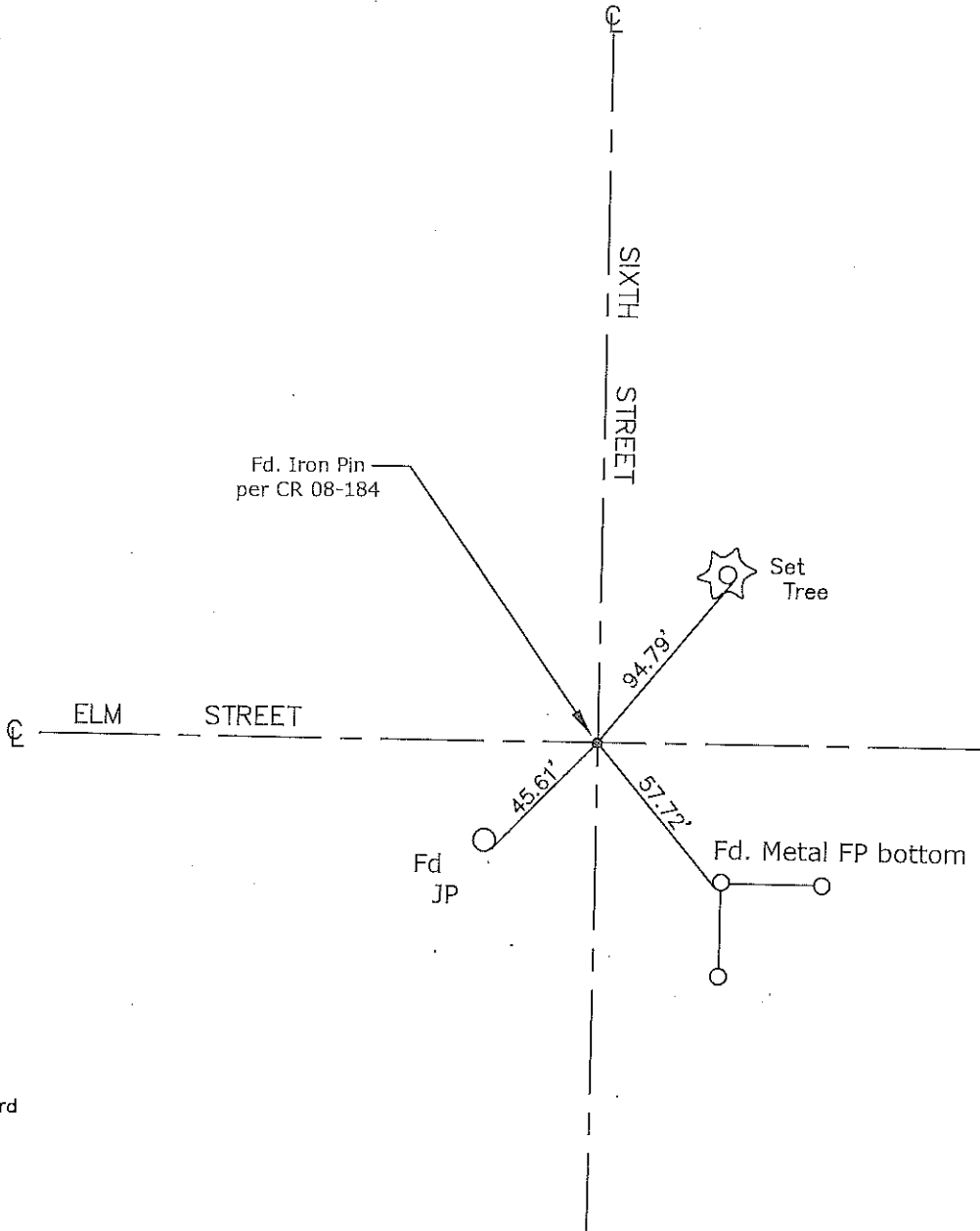
This Corner Record was received July 24, 2017
and examined and filed August 8, 2017
Signed Warren D. Smith P.L.S. or R.C.E. No. 4842
Title County Surveyor



County Surveyor's Comment



N.T.S.



CR=Corner Record
 FP=Fence Post
 JP=Joint Pole
 LP=Light Pole
 PP=Power Pole
 GP=Guy Pole
 SP=Service Pole
 TP=Telephone Pole
 S.F.N.=Searched Found Nothing
 N.T.S.=Not To Scale
 M&P=Maps & Plats
 PM=Parcel Map
 RS=Record of Survey
 FB=Field Book
 N=North
 DI=Drain Inlet
 TOC=Top of Curb

Set=Conc. Nail with Brass Washer Stamped
 "S.J. Co.", unless otherwise noted
 Fd.=Found Conc. Nail with Brass Washer Stamped
 "S.J. Co.", unless otherwise noted
 Note: Found Monuments are not tagged
 unless otherwise noted.

"No Attempt Was Made to Verify the Monument(s)"