

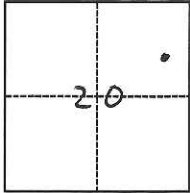
# CORNER RECORD

Agency Index CR-17-186  
Document Number \_\_\_\_\_

City of Stockton County of San Joaquin, California  
Brief Legal Description Southwest corner of Lot 8, 23 M.P. 33

### CORNER TYPE

### COORDINATES (Optional)



T2N, R6E, MDM

- Government Corner
- Meander
- Rancho
- Control
- Property
- Other

Date of Survey June 9, 2017

N. \_\_\_\_\_ E. \_\_\_\_\_  
 Elevation \_\_\_\_\_  
 Units  Metric  U.S. Survey Foot  
 Horizontal Datum \_\_\_\_\_  
 Zone \_\_\_\_\_ Epoch Date \_\_\_\_\_  
 Vertical Datum \_\_\_\_\_  
 Complies with Public Resources Code §§8801-8819  
 Complies with Public Resources Code §§8890-8902

PLS Act Ref.:  8765(d)  8771  8773  Other:  
 Corner/Monument:  Left as found  Established  Rebuilt  Pre-Construction  
 Found and tagged  Reestablished  Referenced  Post-Construction

Narrative of corner identified and monument as found, set, reset, replaced, or removed:  
 See sheet #2 for description(s):

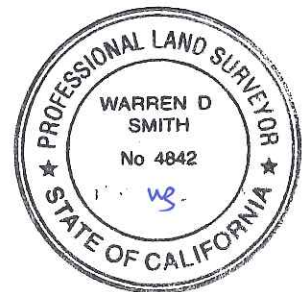
### SURVEYOR'S STATEMENT

This Corner Record was prepared by me or under my direction in conformance with  
 the Professional Land Surveyors' Act on June 13, 2017  
 Signed [Signature] P.L.S. or R.C.E. No. 6947



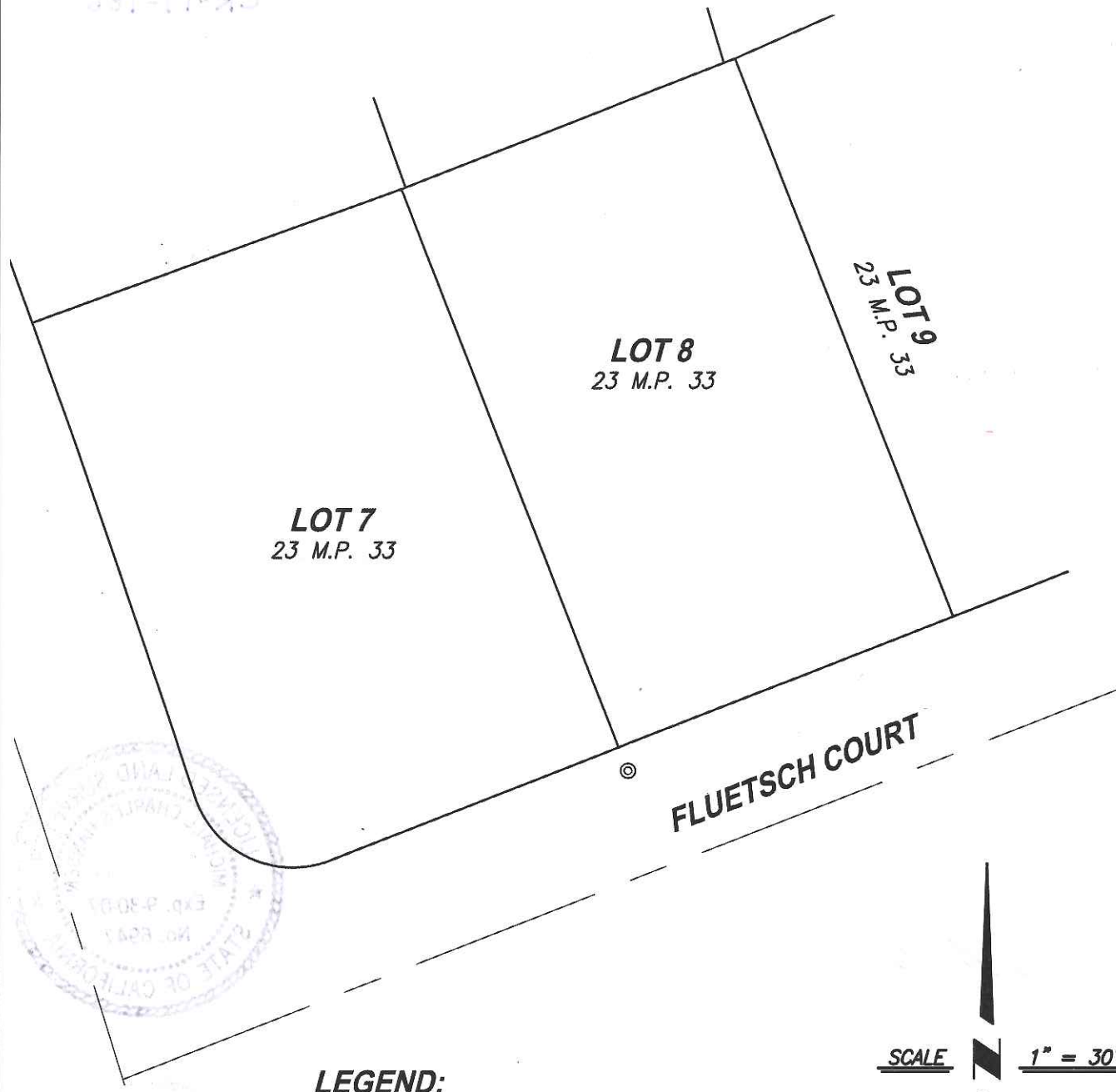
### COUNTY SURVEYOR'S STATEMENT

This Corner Record was received June 21, 2017  
 and examined and filed July 13, 2017  
 Signed Warren D. Smith P.L.S. or R.C.E. No. 4842  
 Title County Surveyor



County Surveyor's Comment

CR-11-85



**LOT 7**  
23 M.P. 33

**LOT 8**  
23 M.P. 33

**LOT 9**  
23 M.P. 33

**FLUETSCH COURT**



**LEGEND:**

⊙ -- REPLACED CUT CROSS WITH 1" BRASS DISC "LS 6947" IN SIDEWALK AT PROJECTION OF LOT LINE.

M.P. -- MAPS & PLATS

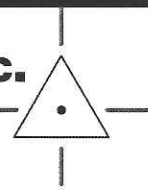
NOTE: NO ATTEMPT WAS MADE TO VERIFY MONUMENT

SCALE 1" = 30'



**CenterPoint Engineering, Inc.**

Civil Engineering & Land Surveying  
1217 Pleasant Grove Blvd, Suite 130 • Roseville, CA • 95678  
Phone: 916-773-4006 Fax: 916-773-4498



DRAWN BY: BB

CHECKED BY: MH

SHEET: 2 OF 2

SCALE: 1" = 30'

DATE: 6-9-2017