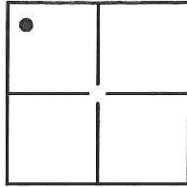


CORNER RECORD

Agency Index: CR-17-183

Document Number: _____

City of STOCKTON County of SAN JOAQUIN, CaliforniaBrief Legal Description MONUMENT ON THE WEST SIDE OF MCKINLEY AVENUE APPROXIMATELY 115'± NORTH OF INDUSTRIAL DRIVE. LOCATED IN THE CAMPO DE LOS FRANCESES RANCHO.

SEC. 24
CAMPO DE LOS
FRANCESES RANCHO

CORNER TYPE

Government Corner Control
 Meander Property
 Rancho Other

Date of Survey 5-30-2017**COORDINATES (Optional)**

N. _____ E. _____

Elevation: 20.45Units Metric U.S. Survey Foot

Horizontal Datum: _____

Zone: _____ Epoch Date: _____

Vert. Datum: NAVD88 Complies with Public Resources Code §§8801-8819 Complies with Public Resources Code §§8890-8902PLS Act Ref: 8765(d) 8771 8773 Other: _____

Corner/
Monument: Left as found Established Rebuilt Pre-Construction
 Found and Tagged Reestablished Referenced Post-Construction

Narrative of corner identified and monument as found, set, reset, replaced, or removed:

 See sheet #2 for description(s):

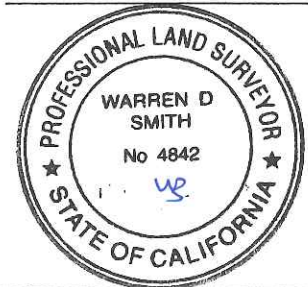
REESTABLISHED CITY OF STOCKTON BRASS DISK IN MONUMENT WELL STAMPED 3S-2, LS 6953,
RESET 05/2017 ON THE WEST SIDE OF MCKINLEY AVENUE APPROXIMATELY 115'± NORTH OF INDUSTRIAL
DRIVE. LOCATED IN THE NORTHWEST QUARTER OF SECTION 24, OF THE CAMPO DE LOS FRANCESES RANCHO.
FOUND MONUMENT AS SHOWN ON RECORD OF SURVEY FILED IN BOOK 35 OF SURVEYS AT PAGE 5,
SAN JOAQUIN COUNTY RECORDS.

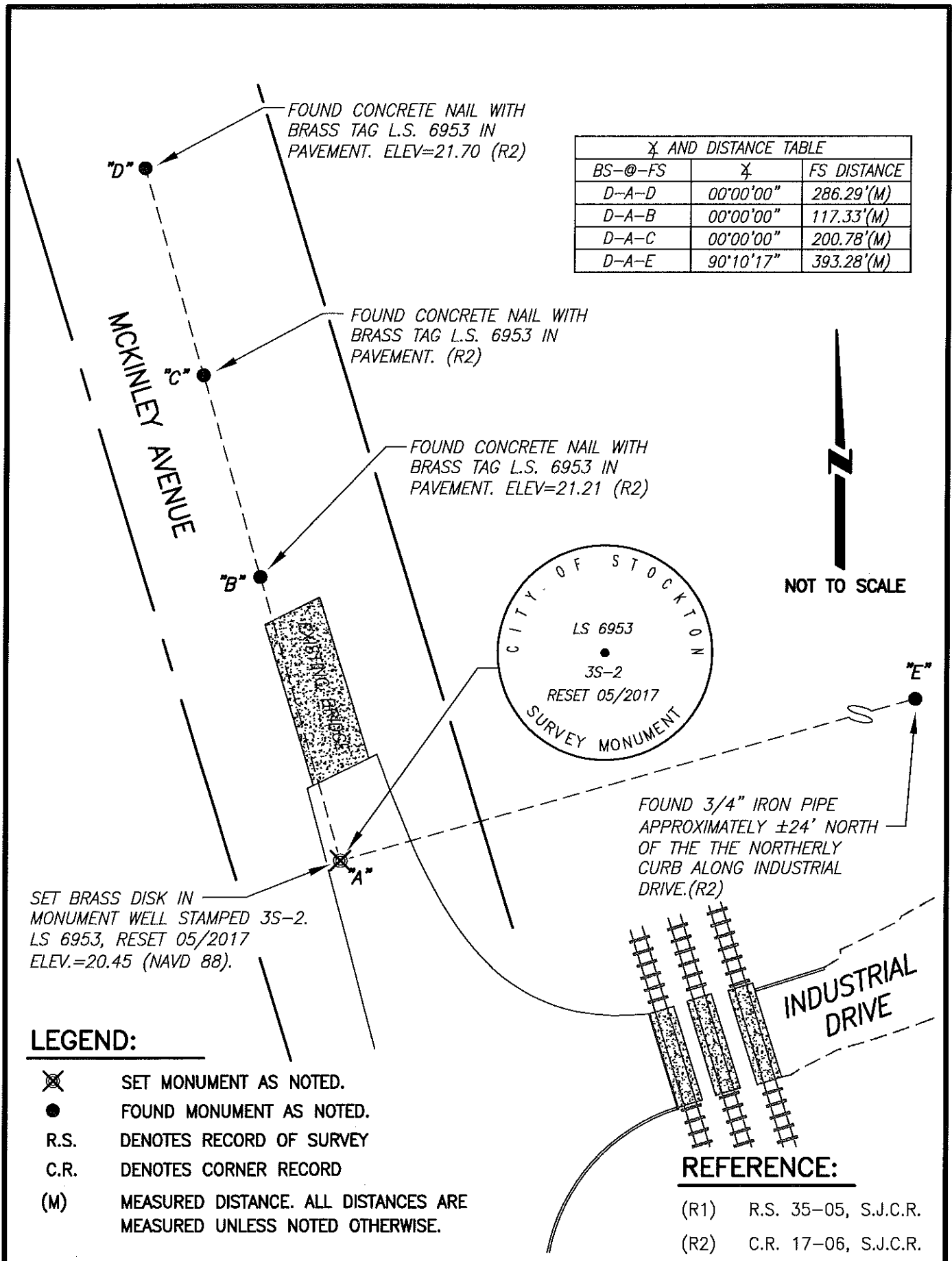
SURVEYOR'S STATEMENT

This Corner Record was prepared by me or under my direction in conformance with
 the Land Surveyors' Act on MAY 31, 2017,

Signed [Signature] P.L.S. or R.C.E. Number 6953**COUNTY SURVEYOR'S STATEMENT**This Corner Record was received June 22, 2017and examined and filed July 13, 2017Signed [Signature] P.L.S. or R.C.E. No: 4842Title County Surveyor

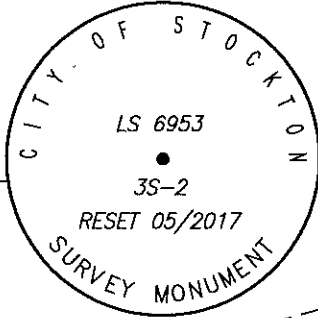
County Surveyor's Comment _____





B AND DISTANCE TABLE		
BS-@-FS	B	FS DISTANCE
D-A-D	00°00'00"	286.29'(M)
D-A-B	00°00'00"	117.33'(M)
D-A-C	00°00'00"	200.78'(M)
D-A-E	90°10'17"	393.28'(M)

NOT TO SCALE



SET BRASS DISK IN MONUMENT WELL STAMPED 3S-2. LS 6953, RESET 05/2017 ELEV.=20.45 (NAVD 88).

LEGEND:

- ⊗ SET MONUMENT AS NOTED.
- FOUND MONUMENT AS NOTED.
- R.S. DENOTES RECORD OF SURVEY
- C.R. DENOTES CORNER RECORD
- (M) MEASURED DISTANCE. ALL DISTANCES ARE MEASURED UNLESS NOTED OTHERWISE.

REFERENCE:

- (R1) R.S. 35-05, S.J.C.R.
- (R2) C.R. 17-06, S.J.C.R.