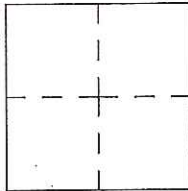


CORNER RECORD

Agency Index CR-17-175
Document Number _____

City of _____ County of San Joaquin, California

Brief Legal Description Thornton Road 340± south of Turner Road
Within Section 2, Township 3 North, Range 5 East, Mount Diablo Base & Meridian



CORNER TYPE

- Government Corner Control
- Meander Property
- Rancho Other

Date of Survey April 03, 2017

COORDINATES (Optional)

- N. _____ E. _____
- Elevation. _____
- Units Metric U.S. Survey Foot
- Horizontal Datum _____
- Zone _____ Epoch Date _____
- Vertical Datum _____
- Complies with Public Resources Code §§8801-8819
- Complies with Public Resources Code §§8890-8902

PLS Act Ref.: 8765(d) 8771 8773 Other:

Corner/Monument: Left as found Established Rebuilt Pre-Construction
 Found and tagged Reestablished Referenced Post-Construction

Narrative of corner identified and monument as found, set, reset, replaced, or removed:
 See sheet #2 for description(s):

SURVEYOR'S STATEMENT

This Corner Record was prepared by me or under my direction in conformance with the Professional Land Surveyor's Act on June 12, 2017

Signed James E. Hart P.L.S. or R.C.E. No. 8657



COUNTY SURVEYOR'S STATEMENT

This Corner Record was received June 16, 2017

and examined and filed July 10, 2017

Signed Warren D. Smith P.L.S. or R.C.E. No. 4842

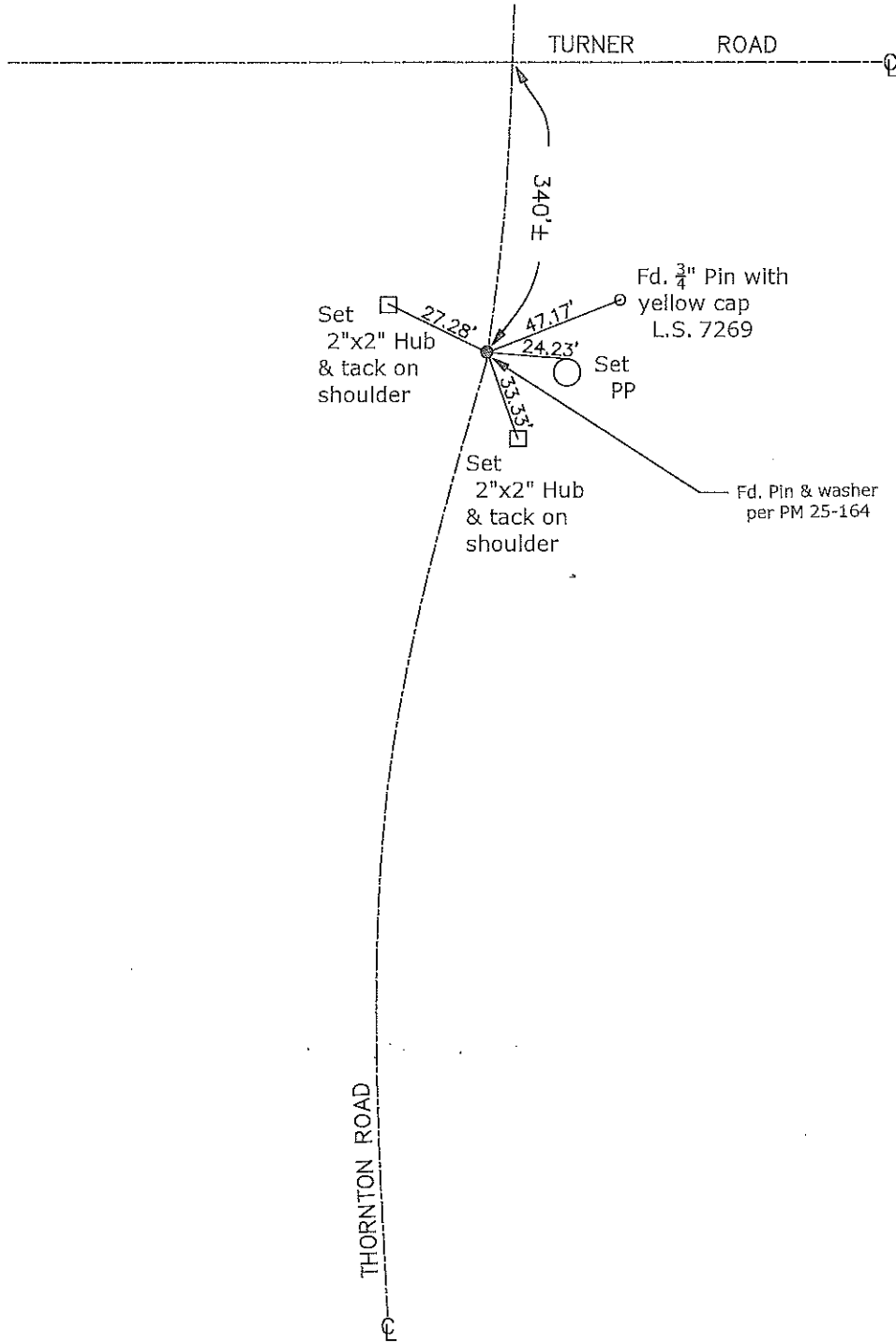
Title County Surveyor

County Surveyor's Comment





N.T.S.



CR=Corner Record
 FP=Fence Post
 JP=Joint Pole
 LP=Light Pole
 PP=Power Pole
 GP=Guy Pole
 SP=Service Pole
 TP=Telephone Pole
 S.F.N.=Searched Found Nothing
 N.T.S.=Not To Scale
 M&P=Maps & Plats
 PM=Parcel Map
 RS=Record of Survey
 FB=Field Book
 N=North
 DI=Drain Inlet
 TOC=Top of Curb

Set=Conc. Nail with Brass Washer Stamped
 "S.J. Co.", unless otherwise noted
 Fd.=Found Conc. Nail with Brass Washer Stamped
 "S.J. Co.", unless otherwise noted

Note: Found Monuments are not tagged unless otherwise noted.

"No Attempt Was Made to Verify the Monument(s)"