

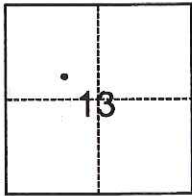
CORNER RECORD

Agency Index CR-17-161
Document Number _____

City of Lodi County of San Joaquin, California
Brief Legal Description _____ A.P.N. 062-190-04

CORNER TYPE

COORDINATES (Optional)



- Government Corner
- Meander
- Rancho
- Control
- Property
- Other

Date of Survey May 16, 2017

N. _____ E. _____
 Elevation _____
 Units Metric U.S. Survey Foot
 Horizontal Datum _____
 Zone _____ Epoch Date _____
 Vertical Datum _____
 Complies with Public Resources Code §§8801-8819
 Complies with Public Resources Code §§8890-8902

T3N, R6E, MDM

PLS Act Ref.: 8765(d) 8771 8773 Other:
 Corner/Monument: Left as found Established Rebuilt Pre-Construction
 Found and tagged Reestablished Referenced Post-Construction

Narrative of corner identified and monument as found, set, reset, replaced, or removed:

See sheet #2 for description(s):

SURVEYOR'S STATEMENT

This Corner Record was prepared by me or under my direction in conformance with
 the Professional Land Surveyors' Act on May 18, 2017
 Signed [Signature] P.L.S. or R.C.E. No. 25,835

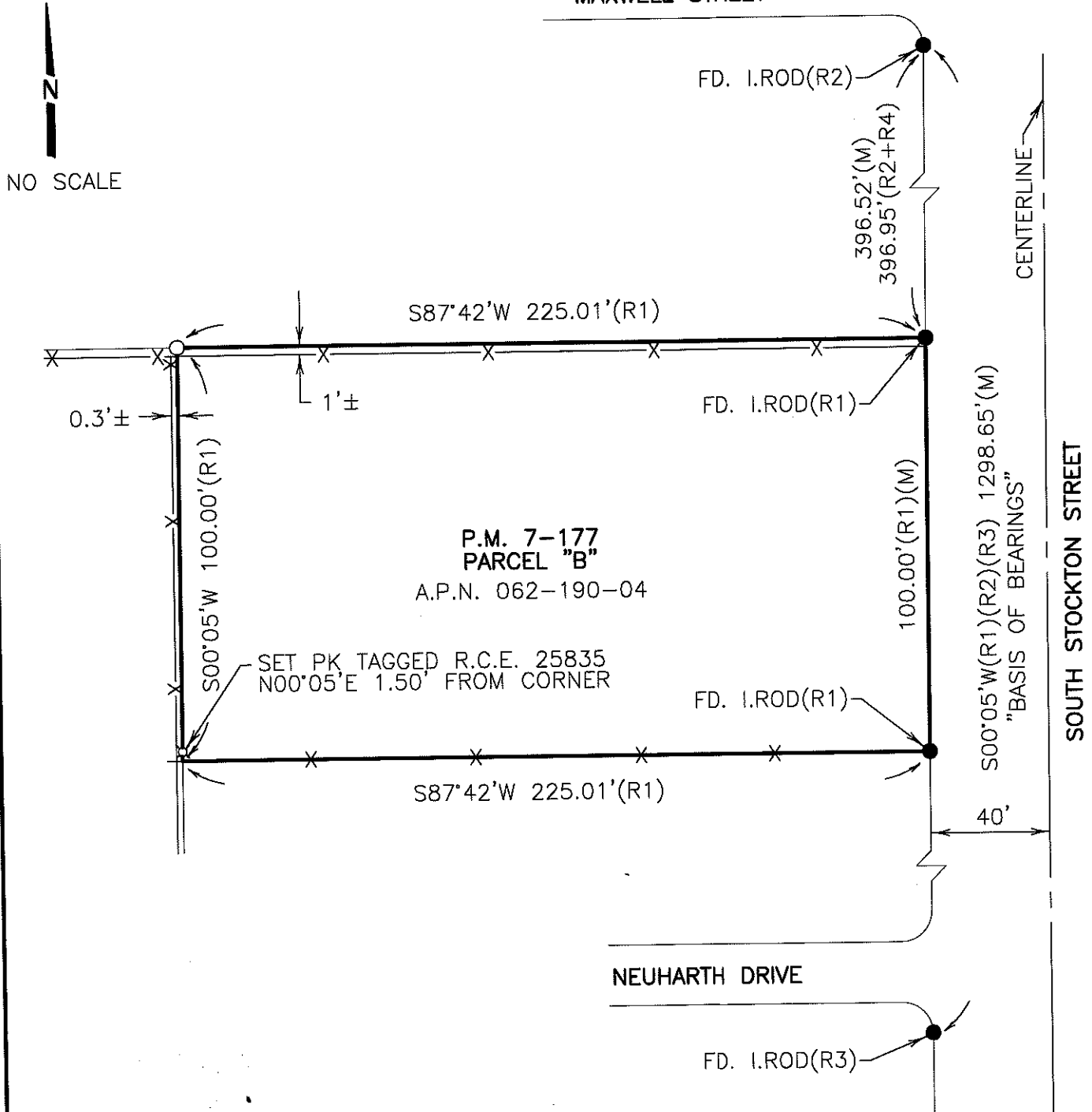


COUNTY SURVEYOR'S STATEMENT

This Corner Record was received June 29, 2017
 and examined and filed June 29, 2017
 Signed Warren D. Smith P.L.S. or R.C.E. No. 4842
 Title County Surveyor



County Surveyor's Comment



LEGEND

- SET 3/4" X 30" IRON ROD WITH CAP STAMPED R.C.E. 25835, UNLESS OTHERWISE NOTED
- ⊕ SET PK TAGGED R.C.E 25835 FOUND MONUMENT AS NOTED
- FOUND
- FD. PARCEL MAP
- M&P MAPS AND PLATS
- I.ROD IRON ROD
- X- EXISTING FENCE

REFERENCES:

- (R1) P.M. 7-177
- (R2) P.M. 2-174
- (R3) M&P 24-47
- (R4) P.M. 6-133

DILLON & MURPHY
CONSULTING CIVIL ENGINEERS
ENGINEERING • PLANNING • SURVEYING
847 N. CLUFF AVENUE, SUITE A2, LODI, CALIFORNIA 95240 (209) 334-6613
1745