

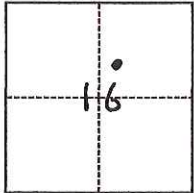
CORNER RECORD

Agency Index CR-17-160
Document Number _____

City of STOCKTON County of SAN JOAQUIN, California
Brief Legal Description _____

CORNER TYPE

COORDINATES (Optional)



T2N, R6E, MDM

- Government Corner
- Meander
- Rancho
- Control
- Property
- Other

Date of Survey February 27, 2017

N. _____ E. _____
 Elevation _____
 Units Metric U.S. Survey Foot
 Horizontal Datum _____
 Zone _____ Epoch Date _____
 Vertical Datum _____
 Complies with Public Resources Code §§8801-8819
 Complies with Public Resources Code §§8890-8902

- PLS Act Ref.: 8765(d) 8771 8773 Other:
- Corner/Monument: Left as found Established Rebuilt Pre-Construction
 Found and tagged Reestablished Referenced Post-Construction

Narrative of corner identified and monument as found, set, reset, replaced, or removed:
 See sheet #2 for description(s):

SIERRA MEADOWS LOT 3, MAPS & PLATS
VOL. 14, PG. 69, SAN JOAQUIN COUNTY RECORDS
SET BRASS TAG "L.S. 6939" ON SIDEWALK.
TAG IS A 5.00 FT. WITNESS CORNER TO THE FRONT LOT CORNER.

SURVEYOR'S STATEMENT

This Corner Record was prepared by me or under my direction in conformance with
 the Professional Land Surveyors' Act on June 14th 2017
 Signed Michael D. Farley P.L.S. or R.C.E. No. 45,6939



COUNTY SURVEYOR'S STATEMENT

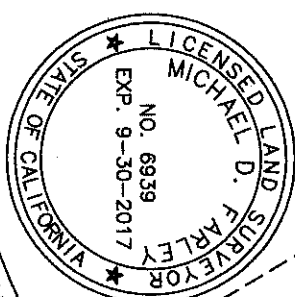
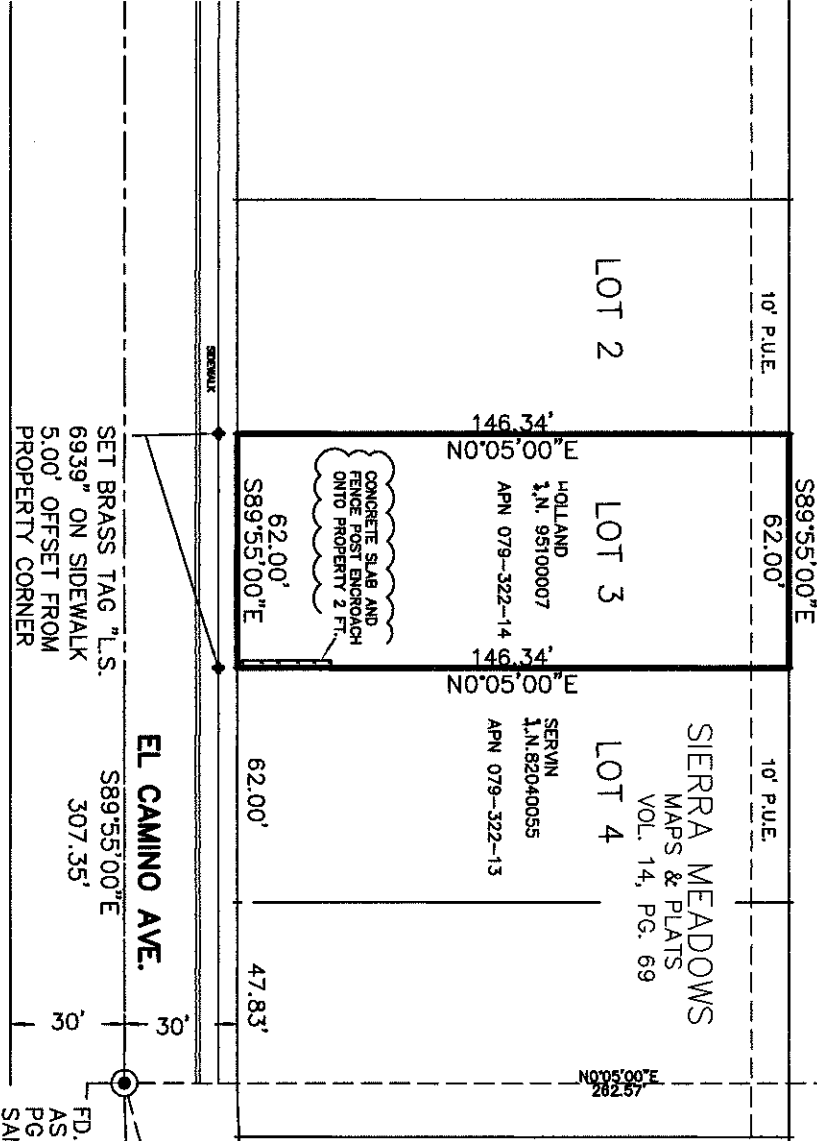
This Corner Record was received June 16, 2017
 and examined and filed June 23, 2017
 Signed Warren D. Smith P.L.S. or R.C.E. No. 4842
 Title County Surveyor



County Surveyor's Comment _____



NO SCALE



BASIS OF BEARINGS
 139.18'
 N74.4252"E
 R=262.57'
 L=304.15'

FD. PIN IN MON. BOX
 AS PER PARCEL MAP BOOK 19,
 PG 97.
 SAN JOAQUIN COUNTY RECORDS

FD. PIN IN MON. BOX
 AS PER PARCEL MAP BOOK 19,
 PG 97.
 SAN JOAQUIN COUNTY RECORDS

FARLEY SURVEYING
 7500 N. WEST LN.
 STOCKTON, CA. 95210
 209-649-9905
 MFSURVEYOR@AOL.COM
 FEB. 2017

REFERENCES:

1. SIERRA MEADOWS SUBDIVISION MAPS & PLATS VOL. 14, PG. 69
2. PARCEL MAPS BOOK 19, PG. 97

ALL RECORDS ARE SAN JOAQUIN COUNTY