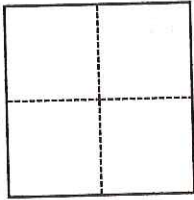


CORNER RECORD

Agency Index CR-17-159
Document Number _____

City of STOCKTON County of SAN JOAQUIN, California
Brief Legal Description _____



CORNER TYPE

- Government Corner
- Meander
- Rancho
- Control
- Property
- Other

Date of Survey February 27, 2017

COORDINATES (Optional)

N. _____ E. _____
 Elevation _____
 Units Metric U.S. Survey Foot
 Horizontal Datum _____
 Zone _____ Epoch Date _____
 Vertical Datum _____
 Complies with Public Resources Code §§8801-8819
 Complies with Public Resources Code §§8890-8902

PLS Act Ref.: 8765(d) 8771 8773 Other:
 Corner/Monument: Left as found Established Rebuilt Pre-Construction
 Found and tagged Reestablished Referenced Post-Construction

Narrative of corner identified and monument as found, set, reset, replaced, or removed:
 See sheet #2 for description(s):

**STONEWOOD UNIT NO. 11, LOT 27, MAPS & PLATS
VOL. 23, PG. 43, SAN JOAQUIN COUNTY RECORDS
SET BRASS TAG "L.S. 6939" ON SIDEWALK.
TAG IS A 3.00 FT. WITNESS CORNER TO THE FRONT LOT CORNER.**

SURVEYOR'S STATEMENT

This Corner Record was prepared by me or under my direction in conformance with
 the Professional Land Surveyors' Act on June 14th, 2017
 Signed Michael D. Farley P.L.S. or R.C.E. No. L.S. 6939

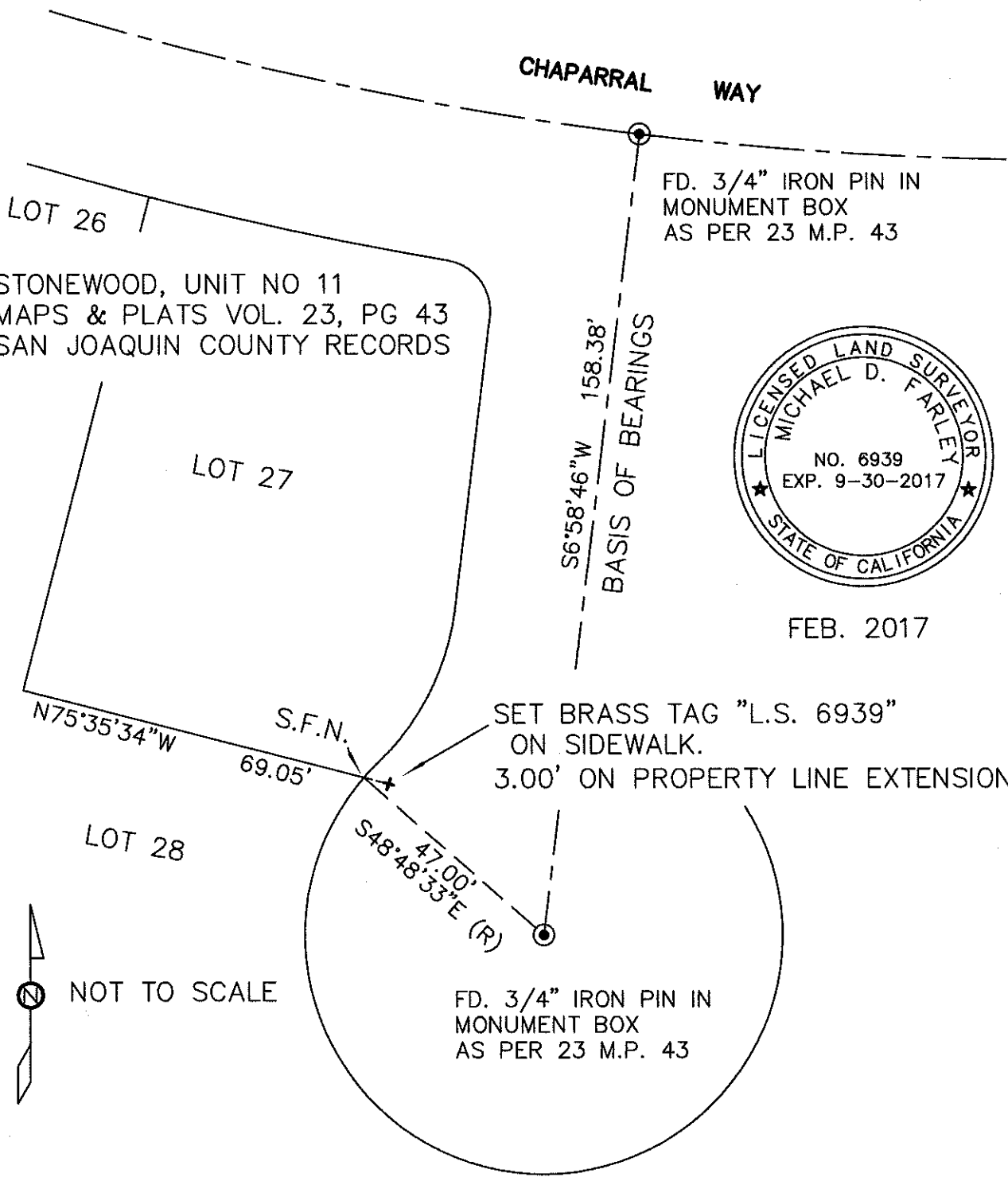


COUNTY SURVEYOR'S STATEMENT

This Corner Record was received June 16, 2017
 and examined and filed June 23, 2017
 Signed Warren D. Smith P.L.S. or R.C.E. No. 4842
 Title County Surveyor



County Surveyor's Comment _____



NO.	REV. DATE	BY	APRVD.	1340 CHAPARRAL WAY STOCKTON, CA.	APPROVED BY	
DWG. BY				MICHAEL D. FARLEY LAND SURVEYOR # 6939	DATE	DRAWING NO.
CK. BY					MAR 2017	
SCALE						