

**CORNER RECORD**

Document Number CR-17-158

City of LATHROP

County of SAN JOAQUIN, California

Brief Legal Description PORTION OF LOT 17, TRACT 3142, BOOK 38, PAGE 49



T15, R6E, MPM

**CORNER TYPE**

- Government Corner  Control
- Meander  Property
- Rancho  Other
- Date of Survey \_\_\_\_\_

**COORDINATES (Optional)**

- N. \_\_\_\_\_
- E. \_\_\_\_\_
- Zone \_\_\_\_\_ NAD27  NAD83
- NAD83 Epoch \_\_\_\_\_
- Elev. \_\_\_\_\_
- Vert. Datum: NGVD29  NAVD88
- Meas. Units: Metric  Imperial

Corner - Left as found  Found and tagged  Established  Reestablished  Rebuilt

Identification and type of corner found: Evidence used to identify or procedure used to establish or reestablish the corner:

MONUMENTS COULD NOT BE SET IN ACCORDANCE WITH TRACT 3490, RECORDED AUGUST 27, 2014 IN BOOK 42 OF MAPS AND PLATS AT PAGE 14.

A description of the physical condition of the monument as found and as set or reset: MONUMENTS FOR THE REAR CORNERS OF LOTS 19/20, 20/21, 21/22, 22/23, 23/24, 24/25, 25/26, 27/28, 28/29, 29/30, 30/31, 31/32, 32/33, 33/34, 34/35, 35/36, 36/37 COULD NOT BE SET DUE TO A FENCE ALONG THE REAR LINE. 3/4" IRON PIPE WERE SET ON THE SIDE LINES 1' FROM THE REAR CORNER.

**SURVEYOR'S STATEMENT**

This Corner Record was prepared by me or under my direction in conformance with the Land Surveyor's Act on JANUARY 24, 2017.

Signed \_\_\_\_\_ P.L.S or R.C.E. No. 8817



**COUNTY SURVEYOR'S STATEMENT**

This Corner Record was received January 27, 2017

and examined and filed June 20, 2017

Signed Warren D. Smith P.L.S or R.C.E. No. 4842

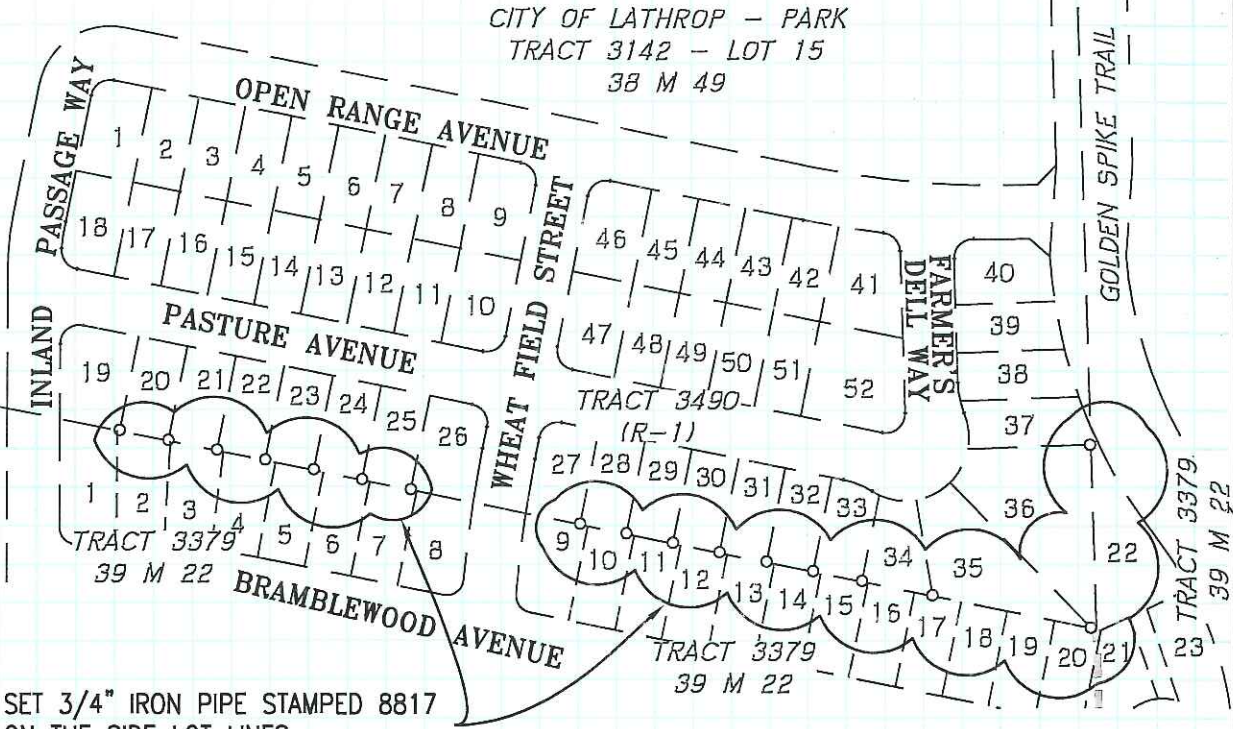
Title County Surveyor



County Surveyor's Comment \_\_\_\_\_

CITY OF LATHROP - PARK  
 TRACT 3142 - LOT 15  
 38 M 49

CITY OF LATHROP - PARK  
 TRACT 3142 - LOT 15  
 38 M 49



SET 3/4" IRON PIPE STAMPED 8817  
 ON THE SIDE LOT LINES  
 1' FROM REAR LOT CORNER



0 100 200 400  
 SCALE: 1" = 200'

**REFERENCE**

(R-1) TRACT 3490, BK 42, PG 14  
 SAN JOAQUIN COUNTY RECORD

**LEGEND**

— — — EXISTING PROPERTY LINE  
 ○ 3/4" IRON PIPE