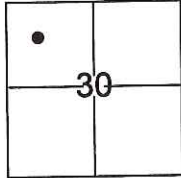


CORNER RECORD

Document Number CR-17-143
 County of San Joaquin, California

City of _____
 Brief Legal Description _____



T.3N., R.7E., M.D.B. & M.

CORNER TYPE

Government Corner Control
 Meander Property
 Rancho Other

Date of Survey March 20, 2017

COORDINATES(Optional)

N. _____
 E. _____
 Zone _____ NAD27 NAD83
 NAD83 Epoch _____
 Elev. _____
 Vert. Datum: NGVD29 NADV88
 Meas. Units: Metric Imperial

Corner - Left as found Found and tagged Established Reestablished Rebuilt

Identification and type of corner found: Evidence used to identify or procedure used to establish or reestablish the corner:

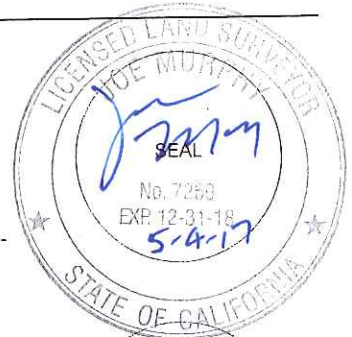
See Sketch.

A description of the physical condition of the monument as found and as set or reset: See Sketch.

SURVEYOR'S STATEMENT

This Corner Record was prepared by me or under my direction in conformance with the Land Surveyor's Act on March 24, 2017.

Signed [Signature] P.L.S. or R.C.E. No.: 7269



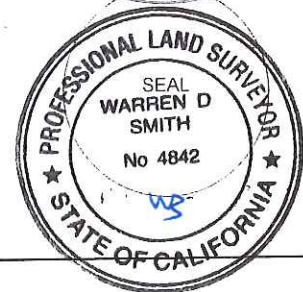
COUNTY SURVEYOR'S STATEMENT

This Corner Record was received May 9, 2017 and examined and filed May 18, 2017.

Signed Warren D. Smith P.L.S. or R.C.E. No.: 4842

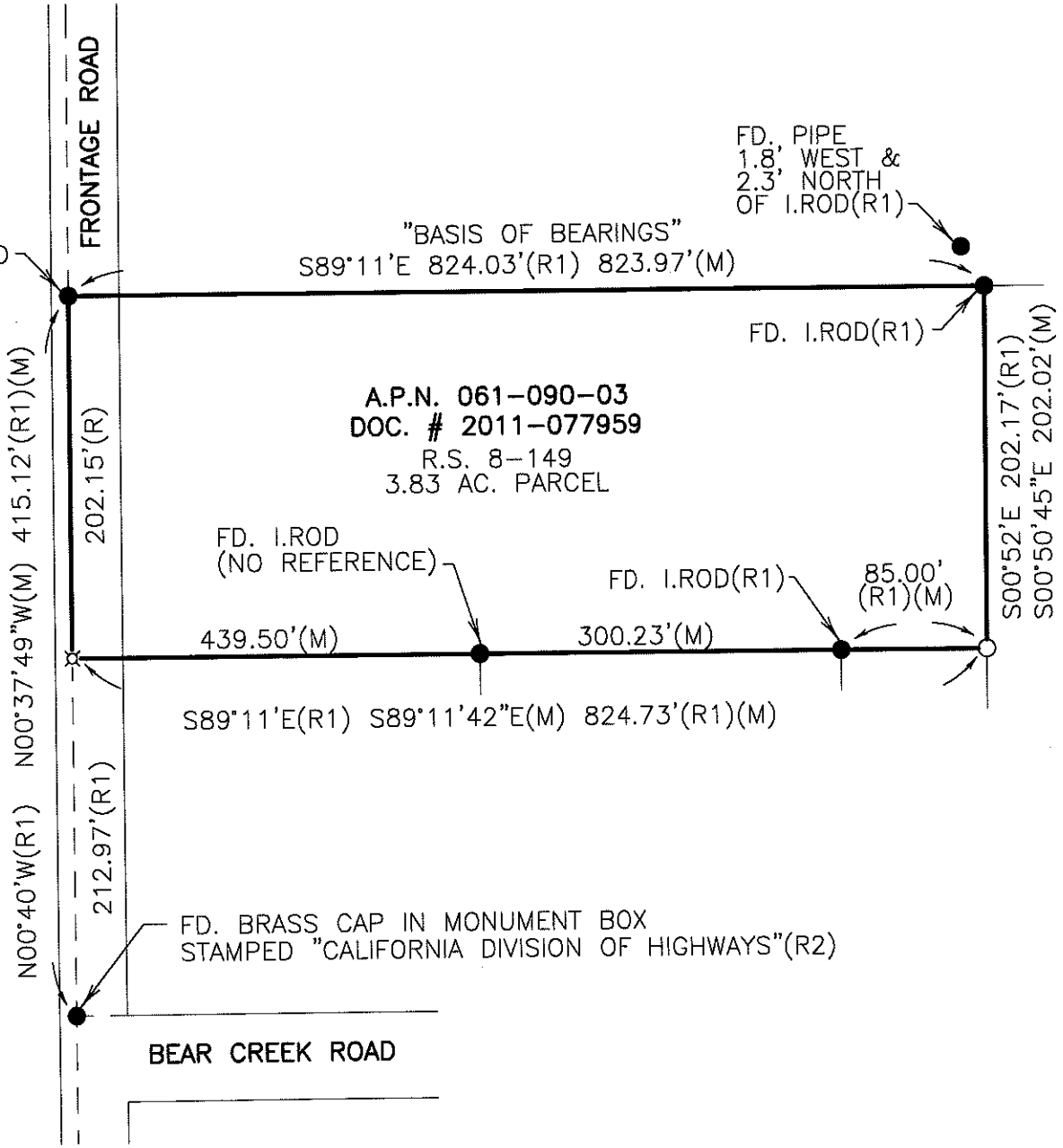
Title County Surveyor

County Surveyor's Comment _____





STATE HIGHWAY ROUTE NO. 99



LEGEND

- SET 3/4" IRON ROD WITH CAP STAMPED L.S. 7269, UNLESS OTHERWISE NOTED
- ⊕ SET PK TAGGED L.S. 7269
- FOUND MONUMENT AS NOTED
- FD. RECORD OF SURVEY
- R.S. DOCUMENT NUMBER
- DOC. #
- CR CORNER RECORD

REFERENCES:

- (R1) R.S. 8-149
- (R2) CR 02-009

DILLON & MURPHY
 CONSULTING CIVIL ENGINEERS
 ENGINEERING • PLANNING • SURVEYING
 847 N. CLUFF AVENUE, SUITE A2, LODI, CALIFORNIA 95240 (209) 334-6613
 1727