

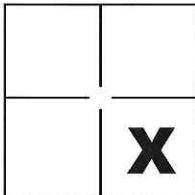
# CORNER RECORD

Document Number CR-17-135

City of City of Lathrop

County of San Joaquin, California

Brief Legal Description The Northwest and Northeast Witness Corners per M. & P. 30-79, S.J.C.R.



Sec. 26, T.1S., R.6E.,  
M.D.B.&M.

### CORNER TYPE

Government Corner  Control   
 Meander  Property   
 Rancho  Other

Date of Survey March 2, 2017

### COORDINATES(Optional)

N. \_\_\_\_\_  
 E. \_\_\_\_\_  
 Zone \_\_\_\_\_ NAD27  NAD83   
 NAD83 Epoch \_\_\_\_\_  
 Elev. \_\_\_\_\_  
 Vert. Datum: NGVD29  NADV88   
 Meas. Units: Metric  Imperial

Corner - Left as found  Found and tagged  Established  Reestablished  Rebuilt

Identification and type of corner found: Evidence used to identify or procedure used to establish or reestablish the corner:

See Sheet 2

A description of the physical condition of the monument as found and as set or reset: \_\_\_\_\_

See Sheet 2

### SURVEYOR'S STATEMENT

This Corner Record was prepared by me or under my direction in conformance with  
 the Land Surveyor's Act on Mar. 9, 2017.

Signed Michael L. Quarles P.L.S. or R.C.E. No.: L.S. 4450



### COUNTY SURVEYOR'S STATEMENT

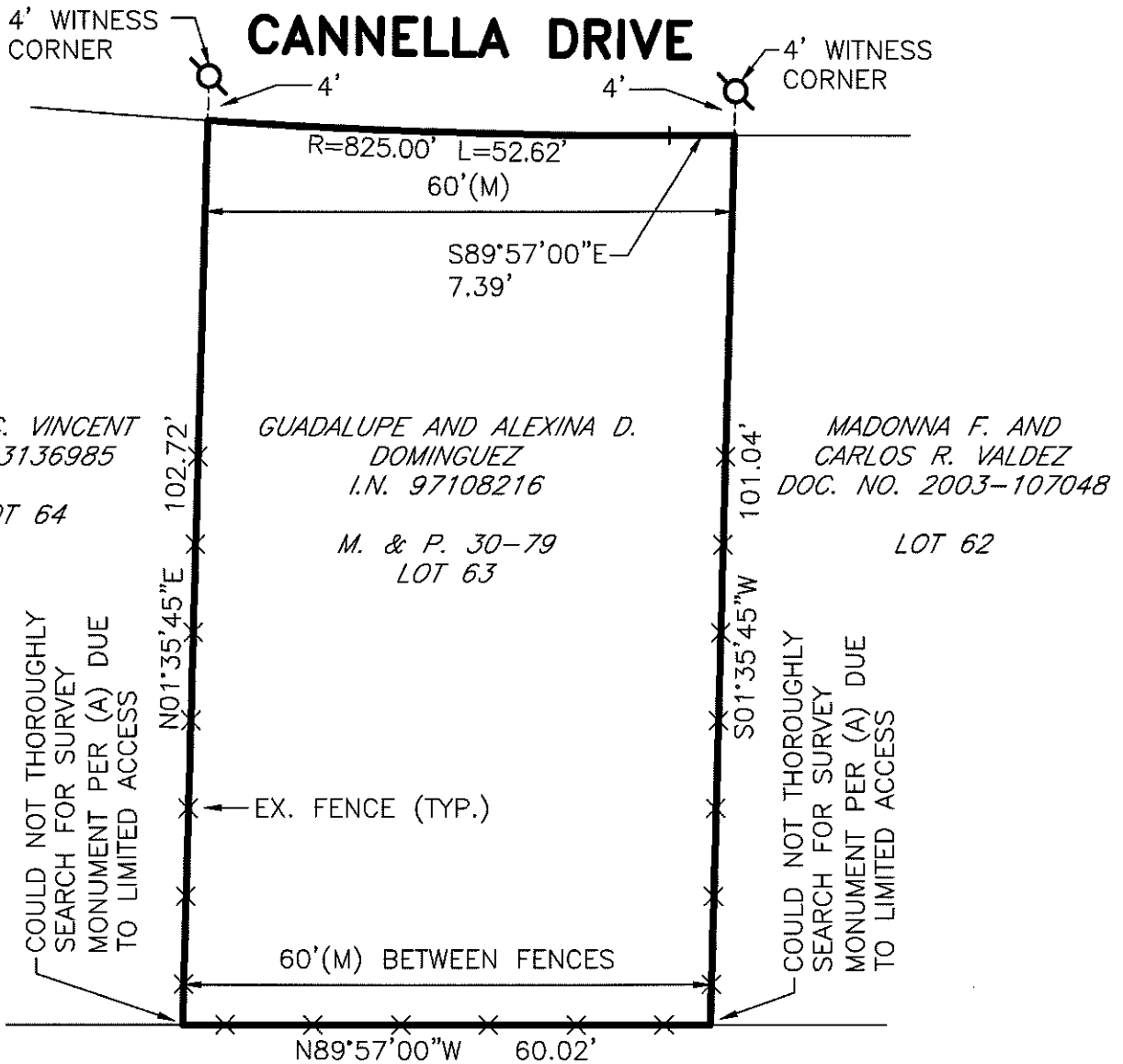
This Corner Record was received May 8, 2017 and examined  
 and filed May 18, 2017.

Signed Warren D. Smith P.L.S. or R.C.E. No.: 4842

Title County Surveyor

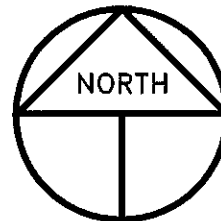
County Surveyor's Comment \_\_\_\_\_





**NOTES**

1. ALL BEARINGS AND DISTANCES SHOWN ARE PER (A), UNLESS NOTED OTHERWISE.
2. EXISTING FENCE APPEAR TO BE ORIGINAL FENCE BUILT AT THE TIME THE HOMES WERE BUILT.



SCALE: 1" = 20'  
 2016-95

**REFERENCE**

(A) M. & P. 30-79, S.J.C.R.

**LEGEND**

- INDICATES FOUND CUT CROSS PER (A) AND REPLACED WITH LEAD AND TACK W/TAG STAMPED LS 4450
- M. & P. INDICATES MAPS, VOLUME AND PAGE, S.C.R.
- S.J.C.R. INDICATES SAN JOAQUIN COUNTY RECORDS
- (M) INDICATES MEASURED ON THIS SURVEY